



CHINA-CEE INSTITUTE  
**HOW THE CEE CITIZENS  
VIEW CHINA'S  
DEVELOPMENT**

- based on household survey -  
**2018**

**Editor in Chief: Dr. Chen Xin**

**Prepared by: GKI Economic Research Co.**

**Telephone:** +36-1-318-1868

**Fax:** +36-1-318-4023

**E-mail:** [gki@gki.hu](mailto:gki@gki.hu)

**Webpage:** [www.gki.hu](http://www.gki.hu)

**PO box:** 1461, Budapest, Pf. 232.

**Prepared by:**

Dr. László Molnár

Attila Udvardi

**Edited by:**

Dr. András Vértes

**Published by:**

China-CEE Institute Nonprofit Ltd.

Telephone: +36-1-5858-690

E-mail: [office@china-cee.eu](mailto:office@china-cee.eu)

Webpage: [www.china-cee.eu](http://www.china-cee.eu)

Address: 1052, Budapest, Petőfi Sándor utca 11.

**Editor in Chief:**

Dr. Chen Xin

**ISBN:** 978-615-81063-9-9

**Cover design:**

PONT co.lab

**Copyright: China-CEE Institute Nonprofit Ltd.**

The reproduction of the study or parts of the study are prohibited.

The findings of the study may only be cited if the source is acknowledged.



# HOW THE CEE CITIZENS VIEW CHINA'S DEVELOPMENT IN 2018

- BASED ON A HOUSEHOLD SURVEY -

**Editor in Chief: Dr. Chen Xin**

**China-CEE Institute**  
Budapest, August 2020



## Preface

The China-CEE Institute launched its first polling project in the fall of 2017, which conducted an extensive survey on how the citizens of 16 countries in Central and Eastern Europe viewed China's development. The survey was conducted in cooperation with professional polling agencies through tendering, with 1000 questionnaires per country and a total of 16,000 questionnaires. The relevant result as a book, entitled *How the CEE Citizens View China's Development (2017)*, was published in English by the China-Central and Eastern European (China-CEE) Institute. The Chinese version was published in China by the Chinese Social Science Press in 2018.

In the fall of 2018, the China-CEE Institute launched a second polling project, expanding the coverage of the survey from 16 countries to 18 countries, not only in the 16 countries of Central and Eastern Europe, but also in Greece and Belarus. Similarly, through the bidding method, in cooperation with professional polling agencies, the same sampling method is used, with 1000 questionnaires in each country, and a total of 18,000 questionnaires. This report is the result of the 2018 poll. In addition to analyzing the views of the public in 2018, it also has a comparison with the results of the 2017 poll. The China-CEE Institute plans to gradually accumulate a database through the annual polling project and observe changes in the perceptions on China's development in Central and Eastern European countries.

The China-CEE Institute, registered as a non-profit limited company in Budapest, Hungary, was established by the Chinese Academy of Social Sciences (CASS) in April 2017. The China-CEE Institute builds

ties and strengthens partnerships with academic institutions and think tanks in Hungary, Central and Eastern European countries, as well as other parts of Europe. The China-CEE Institute aims to encourage scholars and researchers to carry out joint researches, field studies, to organize seminars and lecture series, to hold some training programs for younger students, and make publications, etc.

Prof. Dr. CHEN Xin

Executive President and Managing Director, China-CEE Institute

Deputy Director General, Institute of European Studies, CASS

## Contents

Preface	2
1. Background and key findings	6
2. Survey method	13
3. Evaluating China's economic development in the last 2 years	16
4. Changes in China's importance in the world over the last 5 years	21
5. The awareness of cooperation between China and the CEE countries	26
6. The strength of relationship between China and the CEE countries	27
7. The evaluation of the possible impact of the new Silk Road (Belt and Road) Initiative	31
8. Country profiles	36
Albania	36
Bosnia-Herzegovina	40
Bulgaria	44
Croatia	48
Czech Republic	52
Estonia	56
Hungary	60
Latvia	64
Lithuania	68
Macedonia	72
Montenegro	76
Poland	80
Romania	84
Serbia	88
Slovakia	92
Slovenia	96
Greece	100
Belorussia	103
Appendix – Technical reports	107





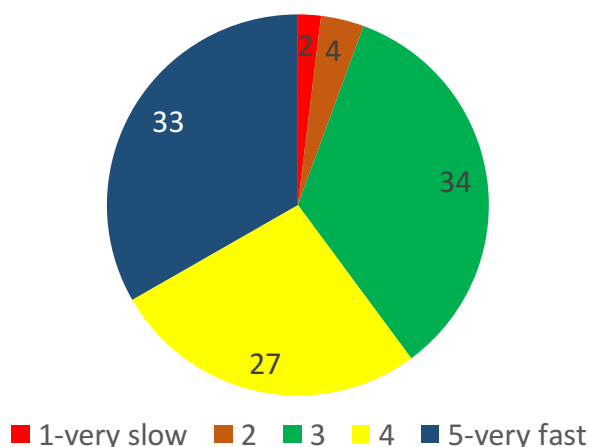
## 1. Background and key findings

China's trade relations play an increasing role in the Central and Eastern European countries. Citizens of the region's countries are also aware of this fact, but until 2017 there were no available research that reflects the public's views on economic and trade development of the Central and Eastern European countries in connection with China. To bridge over this gap, we and China-CEE Institute Nonprofit Ltd. prepared a study based on household surveys in 2017, conducted in 16 countries in the CEE region. After 2017, this is the second time we survey the 16 countries of the cooperation, plus 2 new countries (Greece and Belorussia), which could be also interesting in connection with China's trade relations.

Sixty percent of adult people in the CEE 16 countries evaluate China's economic development in the last 2 years fast (thirty-three percent very fast), which means 1 percentage point improvement over 2017. On the other hand, only six percent considers it is to be slow (2 percent very slow). The remaining thirty-four percent is neutral in this question. Following the EU conjuncture research method, the 1 to 5 scale was transferred to a -100 to +100 scale to eliminate neutral answers and to better show smaller differences between countries. Following this method, similarly to 2017 the inhabitants of Bulgaria, Slovenia, Romania and Serbia (between +58 and +68 points) consider China's economic development outstanding the fastest, while inhabitants of Macedonia and Albania (+26 point) consider it the lowest (the other countries are between +33 and +46 point). The average value is +43 (+2 improvement over 2017), which indicates a very fast development for the whole surveyed region. With the two new countries included in the survey, the average is +44. Compared to 2017, countries with the greatest improvement are Bulgaria and Bosnia-Herzegovina, while the countries with significant deterioration are Albania and Estonia.

### How do you evaluate China's economic development in the last 2 years?

1-very slow; 5-very fast (distribution of answers %)

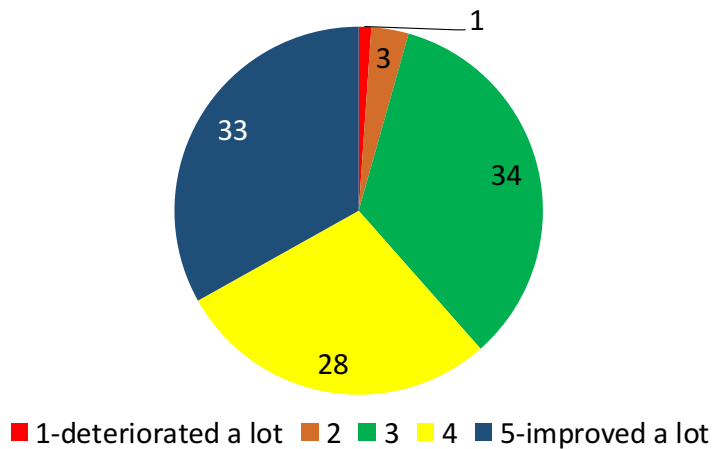


Source: GKI - China-CEE Institute Nonprofit Ltd. survey

Similar to the previous question, a substantial proportion (61%) of people in the CEE 16 countries thinks that China's importance in the world over the last 5 years has been improving (according to thirty-three percent, it improved a lot), which indicates no change over 2017 (61%). Only four percent considers that it has been deteriorating (1% thinks that it deteriorated a lot). The remaining thirty-four percent is neutral in this question. If the results are transferred to the -100 to +100 scale, the inhabitants of Bulgaria consider China's importance the most improving (+68), while inhabitants of Albania and Bosnia-Herzegovina the less, but still not deteriorating (+27 and +28). The other countries are between +34 and +63. The average value is +45, which shows 2 points improvement over 2017, nevertheless it indicates a very significant improvement in China's importance in the world. With the two new countries included in the survey, the average is +47. Compared to 2017, countries with the greatest improvement are Bulgaria and Hungary, while with significant deterioration are Albania and Estonia.

### How has China's importance in the world changed over the last 5 years?

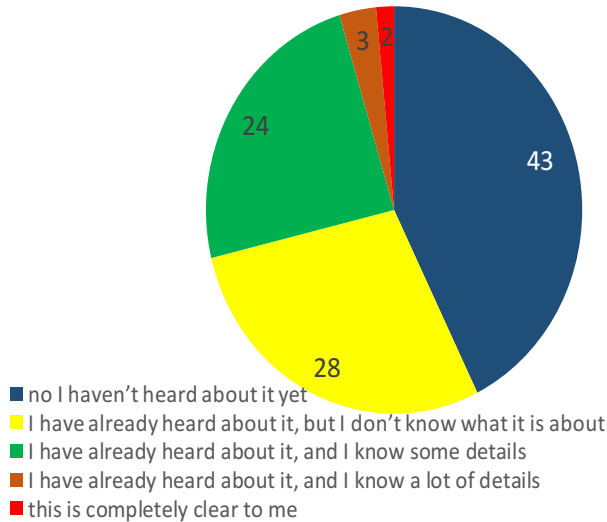
1-deteriorated a lot; 5-improved a lot (distribution of answers %)



Source: GKI - China-CEE Institute Nonprofit Ltd. survey

Fifty-seven percent of the CEE 16 people has already heard about the cooperation between China and the Central and Eastern European countries (this is 2 percentage point improvement over 2017), while forty-three percent hasn't. Fifty percent of those who has already heard about the cooperation, doesn't know what it is about, forty-two percent knows some details, and only five percent knows a lot of details, while three percent indicated that this is completely clear. The latter two percentages improved by 1 and 1 percentage point over 2017. The countries with a lot of detailed information about the cooperation in which the country participates are Romania, Bulgaria, Montenegro and Serbia (Belorussian people are also very informed despite they are not involved in this cross-country cooperation). At the other end of the list are the less informed countries such as Estonia, Latvia and the Czech Republic. Compared to 2017, the country with the greatest improvement is Bulgaria.

**Have you ever heard about the cooperation between China and the Central and Eastern European countries (16+1), in which your country participates<sup>1</sup>? (distribution of answers %)**



Source: GKI - China-CEE Institute Nonprofit Ltd. survey

People in the CEE 16 countries believe that the relationship between China and the region is rather close (twenty-seven percent of total indicated) than loose (twenty-four percent of total indicated), while almost half of the respondents is neutral in this question. If the average is considered there has been no significant change compared to 2017 in this question. Serbia appears to be the country with far the strongest (just like in 2017). Thirty-seven percent indicated very close, while further thirty-three percent close connection in Serbia. According to the opinion of the inhabitants, in addition to Serbia, the relationship between China and Montenegro is the second, Hungary is the third closest, while the Baltic states indicated the loosest connection. Compared to 2017, the country with the greatest

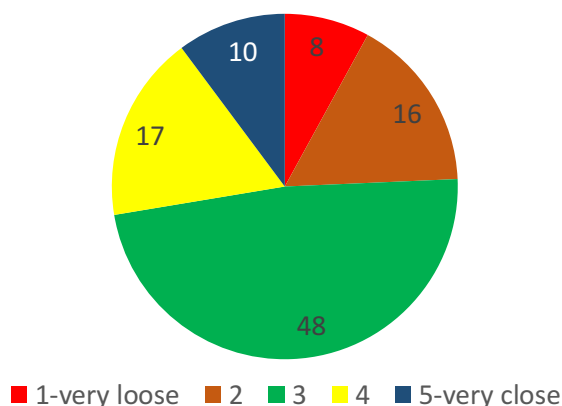
---

<sup>1</sup> Greece and Belorussia do not participate in this cooperation, thus the question in these two countries was the following: "Have you ever heard about the cooperation between China and the Central and Eastern European countries (16+1)?"

improvement is Croatia, while the country with the greatest deterioration is Estonia.

### How strong do you think the relationship between China and your country?

1-very loose; 5-very close (distribution of answers %)



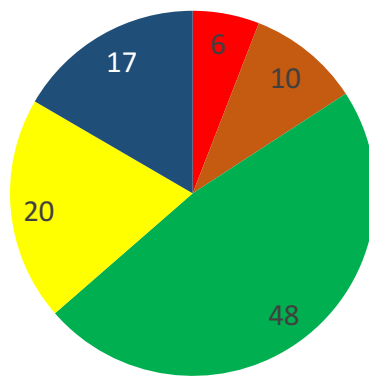
Source: GKI - China-CEE Institute Nonprofit Ltd. survey

Thirty-seven percent of people (compared to thirty-four percent in 2017) in the CEE 16 countries considers the possible impact of the new Silk Road Initiative (which aims to strengthen trade and economic relations between China and CEE countries) in the next 5 years fruitful (17% considers it very fruitful vs. 14% in 2017). On the other hand, ten percent calculates with moderate impact (no change over 2017), while only six percent thinks that this Initiative will have no impact at all (+ 1 percentage point over 2017). The remaining is neutral in this question. On the -100-+100 scale – just like in 2017 – the inhabitants of Serbia consider the possible impact of the new Silk Road Initiative in the next 5 years the most fruitful (+42 vs. +31 in 2017), followed by Bulgaria (+37 vs. +22 in 2017) and Lithuania (+30 just like in 2017), while inhabitants of Estonia, Croatia and Bosnia-Herzegovina are the most pessimistic in this question (similarly to 2017). The average value is +16 (vs. +13 in 2017), which means a little positive than average and improving consideration for the whole surveyed region. With the two new countries included in the survey, the average is +18.

Compared to 2017, countries with the greatest improvement are Bulgaria and Serbia, while the countries with the greatest deterioration are Estonia, Macedonia and Poland.

**How do you consider the possible impact of the new Silk Road Initiative in the next 5 years, which aims to strengthen trade and economic relations between China and your country?**

1-no impact at all; 5-very fruitful (distribution of answers %)



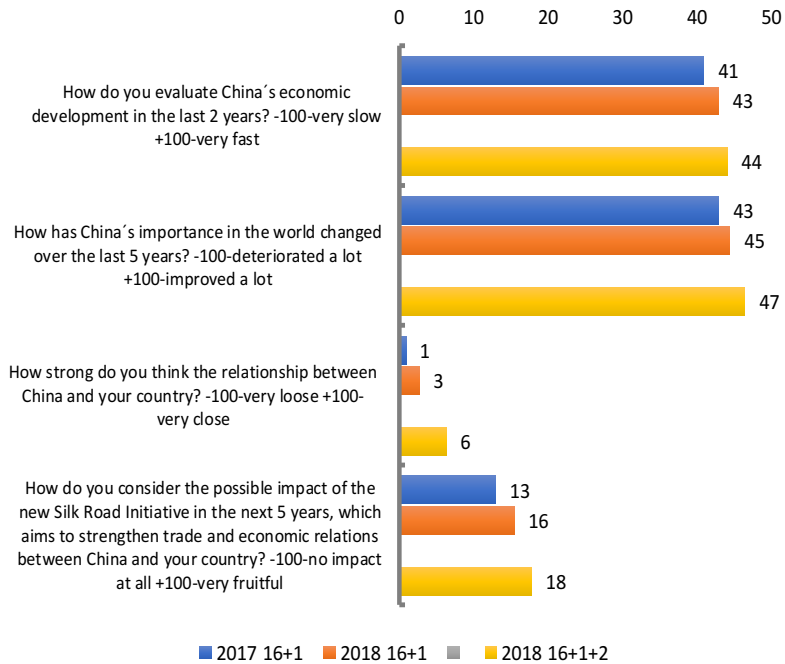
■ 1-no impact at all ■ 2 ■ 3 ■ 4 ■ 5-very fruitful

Source: GKI - China-CEE Institute Nonprofit Ltd. survey

The diagram below shows the CEE averages of the four questions Q1, Q2, Q3 and Q5 in one graph, which are to be measured on a scale between -100 and +100. All the four averages improved by 2 or 3 points over 2017.

## Evaluating the scale questions (Q1, Q2, Q3, Q5)

scale -100 - +100 (average value)



Source: GKI - China-CEE Institute Nonprofit Ltd. survey

## 2. Survey method

We have conducted primary research, a large-scale survey in the following countries:

- Poland
  - Hungary
  - Bulgaria
  - Croatia
  - Serbia
  - Albania
  - Macedonia
  - Montenegro
  - Bosnia-Herzegovina
  - Slovakia
  - Romania
  - Czech Republic
  - Slovenia
  - Latvia
  - Estonia
  - Lithuania
- 
- Greece (did not participate in 16+1 cooperation)
  - Belorussia (did not participate in 16+1 cooperation)

We have created two country groups to calculate averages:

- CEE 16 includes the countries which are involved in the 16+1 cooperation.
- CEE 18 includes all the countries in the survey.

Due to economic considerations, we have made the survey with three different partners: Ipsos, GFK and TNS Kantar. The sample size (1000)



was the same in every country, it totalled to 18,000 for the whole CEE region. The survey sample was representative by age, sex and education. The characteristic of the population in the different countries and the survey possibilities of the partner companies we used 3 different survey methods: CAPI (face-to-face interview), CAWI (on-line) and CATI (by telephone). The technical reports we received from our survey partners are to be found in the Appendix of this study.

We asked the households 5 closed question, most measured on Likert-scale (1-5). These were the followings:

- Q1. How do you evaluate China's economic development in the last 2 years?  
1-very slow; 5-very fast
- Q2. How has China's importance in the world changed over the last 5 years?  
1-deteriorated a lot; 5-improved a lot
- Q3. How strong do you think the relationship between China and your country?  
1-very loose; 5-very close
- Q4. Have you ever heard about the cooperation between China and the Central and Eastern European countries (16+1), in which your country participates?<sup>2</sup>

1-no I haven't heard about it yet

---

<sup>2</sup> Greece and Belorussia do not participate in this cooperation, thus the question in these two countries was the following: "Have you ever heard about the cooperation between China and the Central and Eastern European countries (16+1)?"

2-I have already heard about it, but I don't know what it is about

3-I have already heard about it, and I know some details

4-I have already heard about it, and I know a lot of details

5-this is completely clear to me

- Q5. How do you consider the possible impact of the new Silk Road Initiative (Belt & Road Initiative) in the next 5 years, which aims to strengthen trade and economic relations between China and your country?

1-no impact at all; 5-very fruitful

### **3. Evaluating China's economic development in the last 2 years**

60% of adult people in the CEE 16 countries evaluate China's economic development in the last 2 years fast (33% very fast), which means 1 percentage point improvement over 2017. On the other hand, only 6% considers it is to be slow (2% very slow). The remaining 34% is neutral in this question. The proportion of the very fast opinion is the highest in the countries:

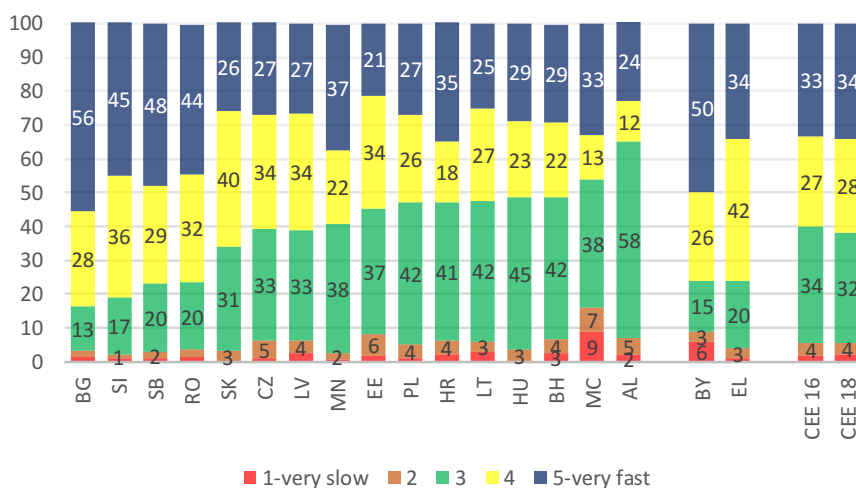
- Bulgaria – 56%,
- Serbia – 48%,
- Slovenia – 45%,
- and Romania – 44%,
- (calculating with 18 countries Belorussia is also significant with 50%),

while the lowest in:

- Estonia – 21%,
- Albania – 24%,
- Lithuania – 25%,
- and Slovakia – 26%.

## How do you evaluate China's economic development in the last 2 years?

1-very slow; 5-very fast (distribution of answers %)

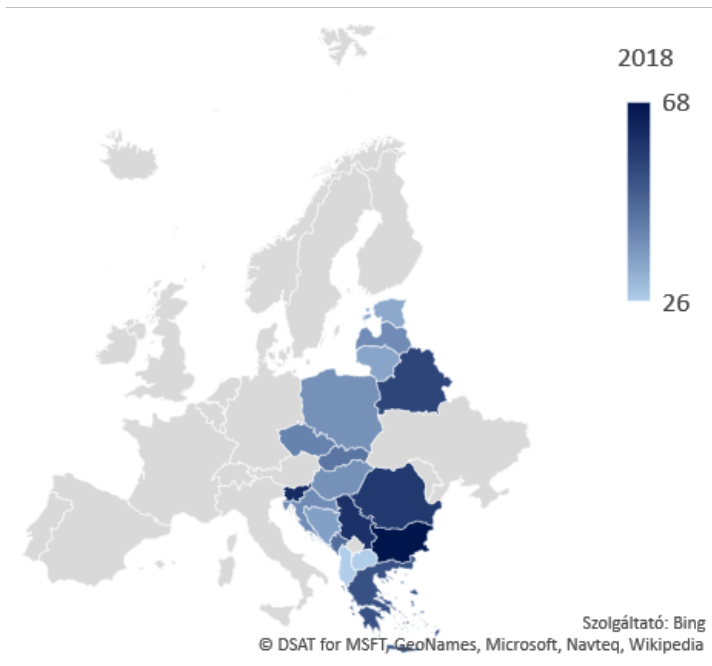
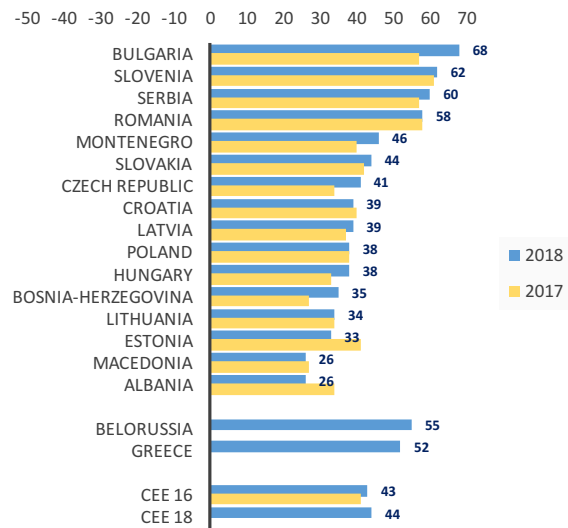


Source: GKI - China-CEE Institute Nonprofit Ltd. survey

Following the EU conjuncture research method, the 1 to 5 scale was transferred to a -100 to +100 scale to eliminate neutral answers and to better show smaller differences between countries. Following this method, similarly to 2017 the inhabitants of Bulgaria, Slovenia, Serbia and Romania (between +58 and +68 points) consider China's economic development outstanding the fastest, while inhabitants Macedonia and Albania (+26 point) consider it the lowest (the other countries are between +33 and +46 point). The average value is +43 (+2 improvement over 2017), which indicates a very fast development for the whole surveyed region. With the two new countries included in the survey, the average is +44. Compared to 2017, countries with the greatest improvement are Bulgaria and Bosnia-Herzegovina, while the countries with significant deterioration are Albania and Estonia.

## How do you evaluate China's economic development in the last 2 years?

-100-very slow; +100-very fast (average value)

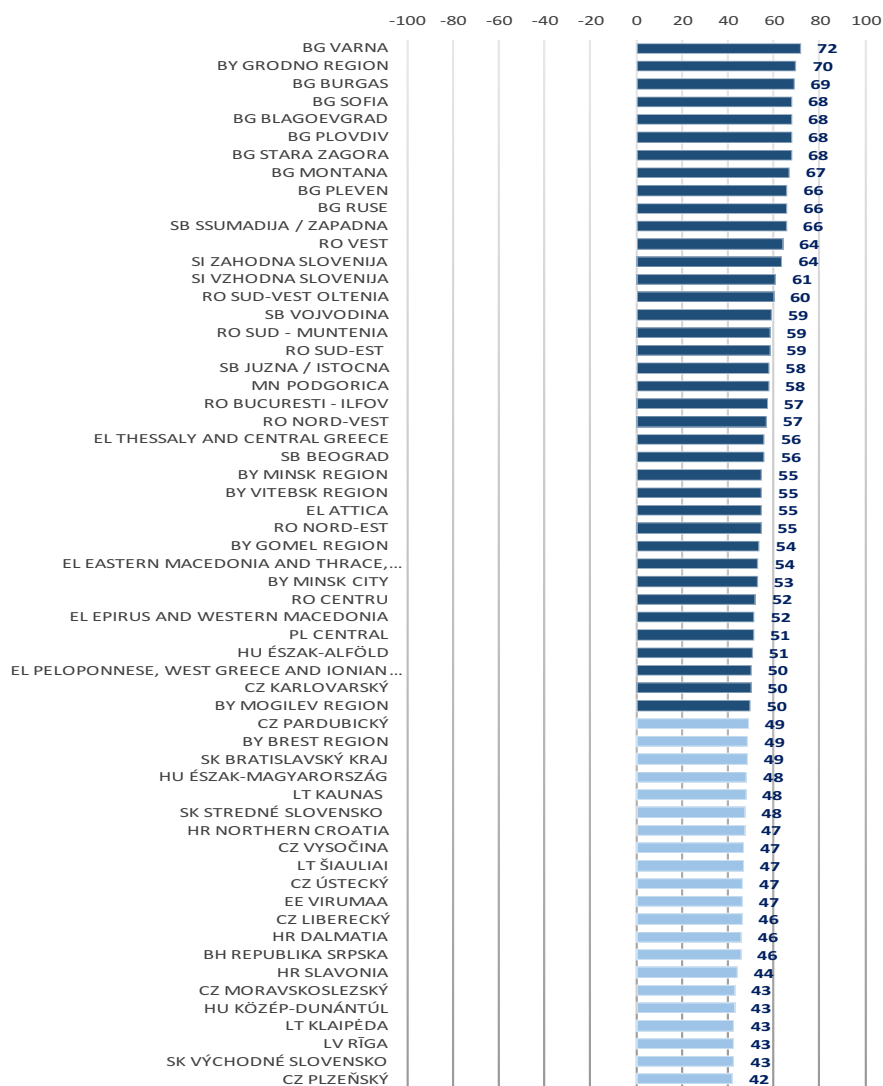


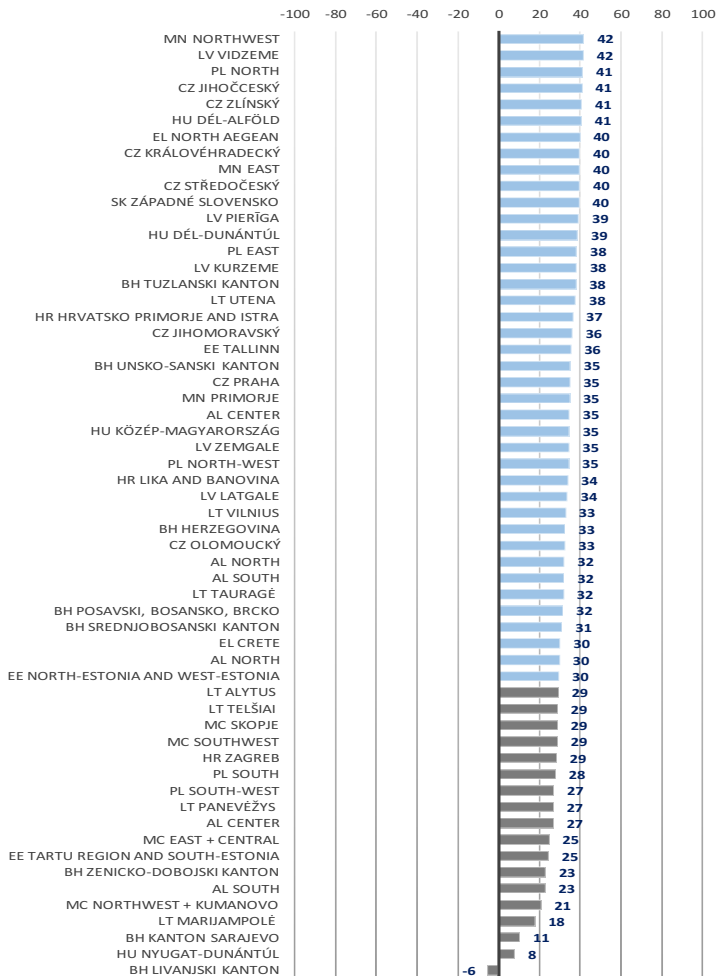
Source: GKI - China-CEE Institute Nonprofit Ltd. Survey

## How do you evaluate China's economic development in the last 2 years?

– by region

-100-very slow; +100-very fast (average value)





Source: GKI - China-CEE Institute Nonprofit Ltd. survey

By NUTS2 regions, inhabitants of the TOP3 region of the CEE 16 countries, which consider China's economic development the fastest, are all from Bulgaria: Varna, Burgas and Sofia (if we calculate with 18 countries, Grodno Region from Belorussia is the second), while the lowest three are Kanton Sarajevo and Livanjski kanton from Bosnia and Nyugat-Dunántúl from Hungary.

#### 4. Changes in China's importance in the world over the last 5 years

Similar to the previous question, a substantial proportion (61%) of people in the CEE 16 countries evaluate China's importance in the world over the last 5 years has been improving (according to 33%, it improved a lot), which indicates no change over 2017 (61%), while only 4% considers it has been deteriorating (by 1% it deteriorated a lot). The remaining 34% is neutral in this question. The share of "improved a lot" is the highest in the following CEE 16 countries:

- Bulgaria – 52%
- Serbia – 47%,
- and Slovenia – 47%,
- (calculating with 18 countries Belorussia is also significant with 59%),

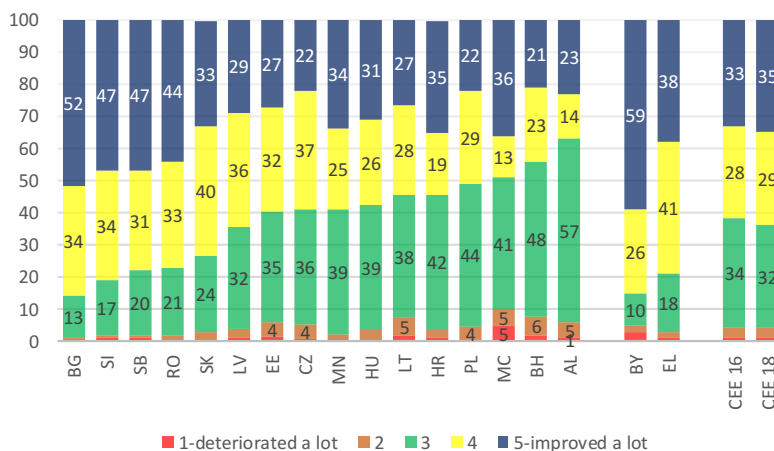
while the lowest in:

- Bosnia-Herzegovina – 21%
- Czech Republic – 22%,
- and Poland – 22%.



## How has China's importance in the world changed over the last 5 years?

1-deteriorated a lot; 5-improved a lot (distribution of answers %)

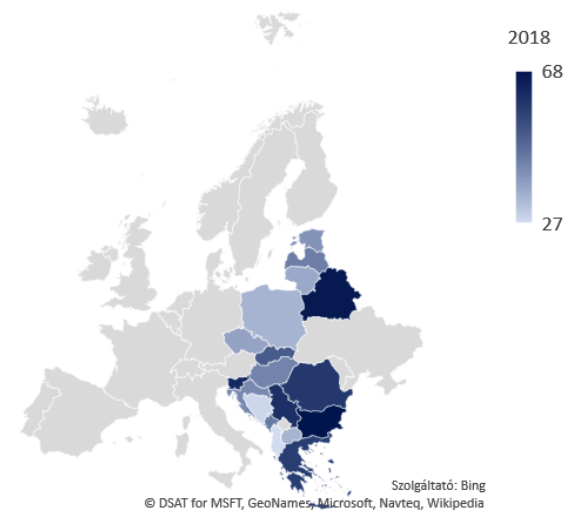
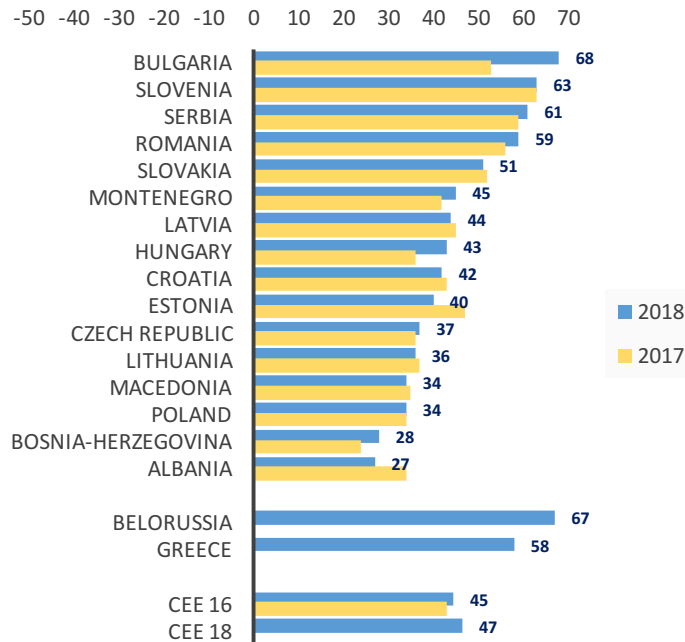


Source: GKI - China-CEE Institute Nonprofit Ltd. survey

If the results are transferred to the -100 to +100 scale, the inhabitants of Bulgaria consider China's importance the most improving (+68), while inhabitants of Albania and Bosnia-Herzegovina the less, but still not deteriorating (+27 and +28). The other countries are between +34 and +63. The average value is +45, which shows 2 points improvement over 2017, nevertheless it indicates a very significant improvement in China's importance in the world. With the two new countries included in the survey, the average is +47. Compared to 2017, countries with the greatest improvement are Bulgaria and Hungary, while with significant deterioration are Albania and Estonia.

## How has China's importance in the world changed over the last 5 years?

-100-deteriorated a lot; +100-improved a lot (average value)



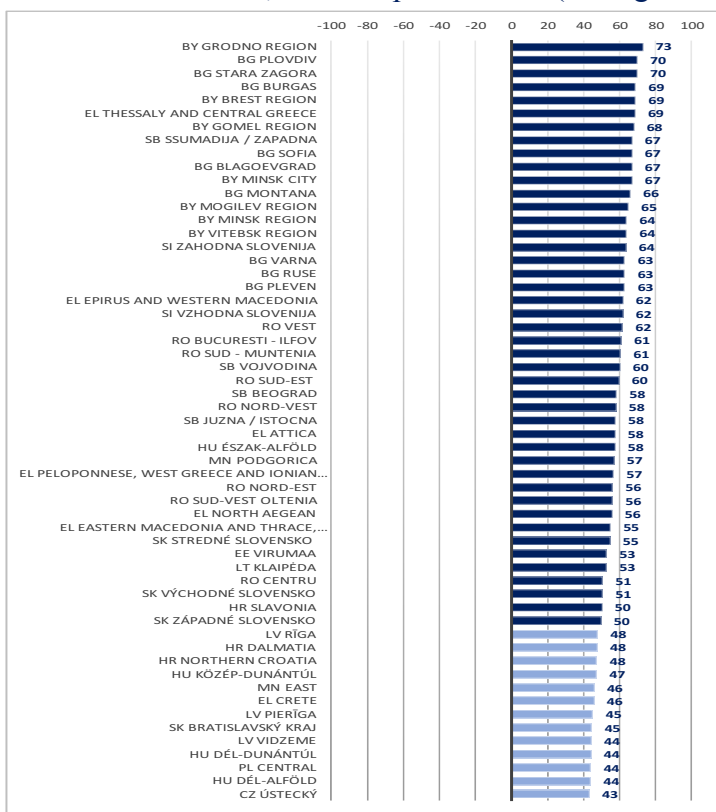
Source: GKI - China-CEE Institute Nonprofit Ltd. survey

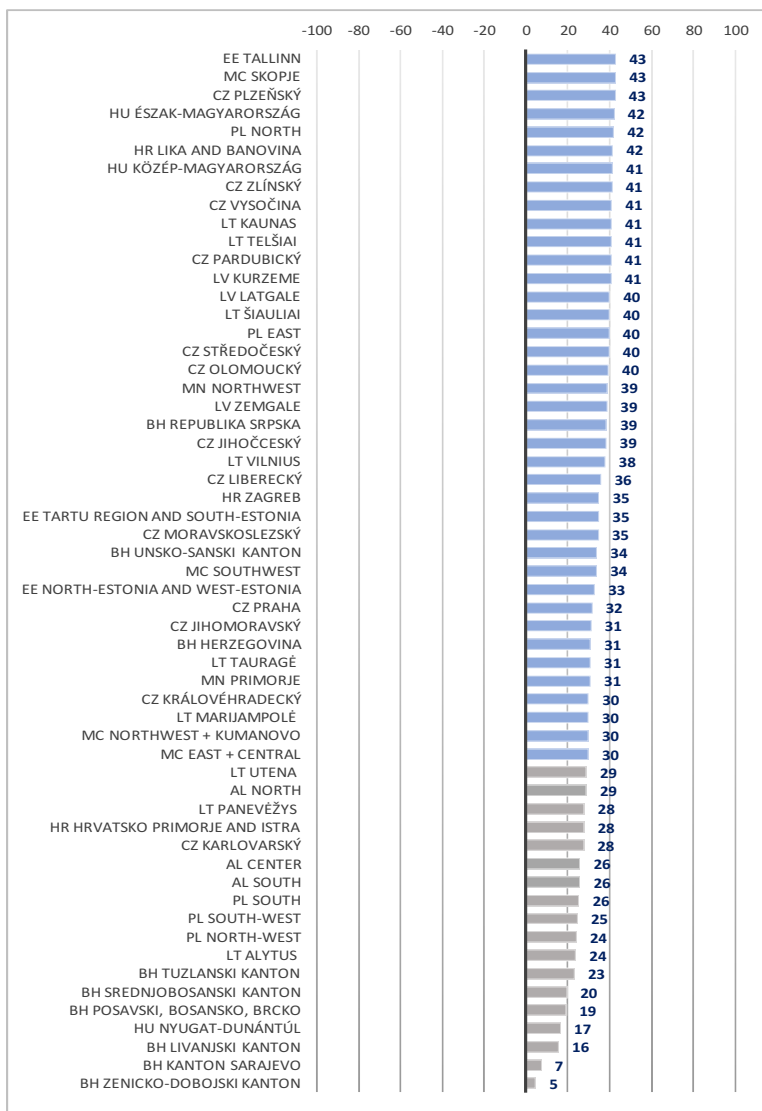
By NUTS2 regions, inhabitants of the TOP3 region, which consider China's importance in the world the most improving are three Bulgarian

regions: Plovdiv, Stara Zagora and Burgas (if we calculate with 18 countries, Grodno Region from Belorussia is the first), while the lowest regions are three Bosnian regions, which Zenicko-Dobojski kanton, Livanjski kanton and Kanton Sarajevo, which consider China's importance rather neutral, than improving.

### How has China's importance in the world changed over the last 5 years?

-100-deteriorated a lot; +100-improved a lot (average value)





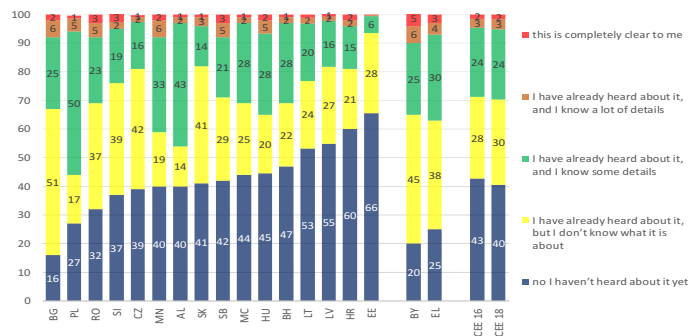
Source: GKI - China-CEE Institute Nonprofit Ltd. survey

## 5. The awareness of cooperation between China and the CEE countries

57% of the CEE 16 people has already heard about the cooperation between China and the Central and Eastern European countries (2 percentage point improvement over 2017), while 43% hasn't. 50% of those who has already heard about the cooperation, doesn't know what it is about, 42% knows some details, and only 5% knows a lot of details, while 3% indicated that this is completely clear. The latter two proportions improved by 1 and 1 percentage point over 2017.

The countries with a lot of detailed information about the cooperation in which the country participates are Romania, Bulgaria, Montenegro and Serbia (Belorussian people are also very informed despite they are not involved in this cross-country cooperation). At the other end of the list are the less informed countries such as Estonia, Latvia and the Czech Republic. Compared to 2017, the country with the greatest improvement is Bulgaria.

### Have you ever heard about the cooperation between China and the Central and Eastern European countries (16+1), in which your country participates?<sup>3</sup> (distribution of answers %)



Source: GKI - China-CEE Institute Nonprofit Ltd. survey

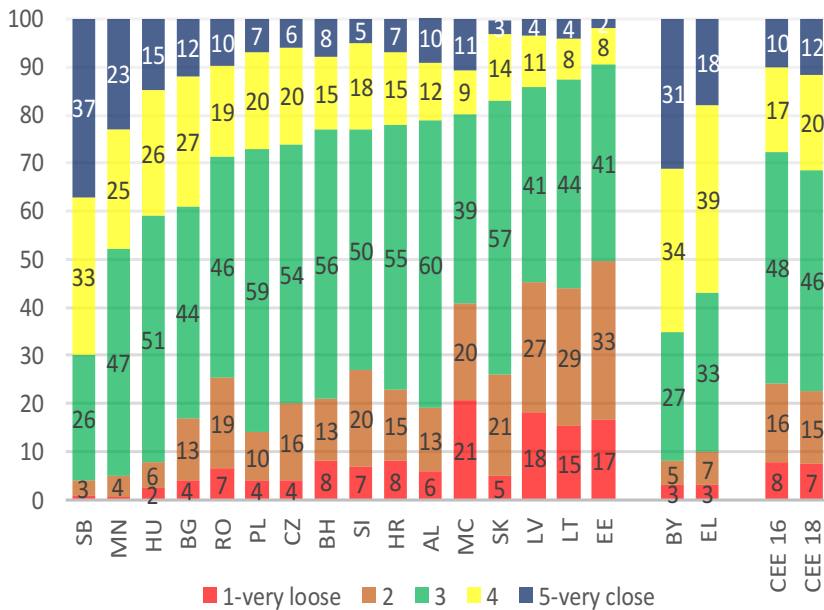
<sup>3</sup> Greece and Belorussia do not participate in this cooperation, thus the question in these two countries was the following: "Have you ever heard about the cooperation between China and the Central and Eastern European countries (16+1)?"

## 6. The strength of relationship between China and the CEE countries

People in the CEE countries believe that the relationship between China and the region is rather close (27% of total indicated) than loose (24% of total indicated), while almost half of the respondents is neutral in this question. If the average is considered there has been no significant change compared to 2017 in this question. Serbia appears to be the country with far the strongest (just like in 2017). 37% indicated very close, while further 33% close connection in Serbia.

### How strong do you think the relationship between China and your country?

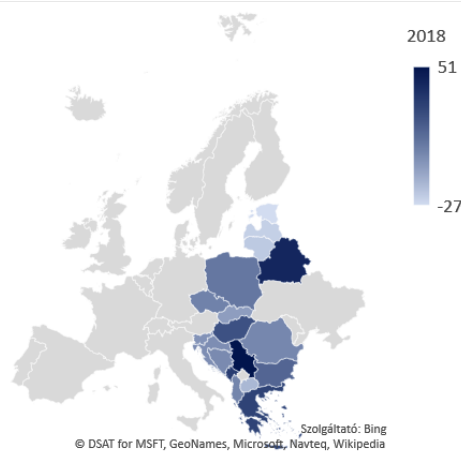
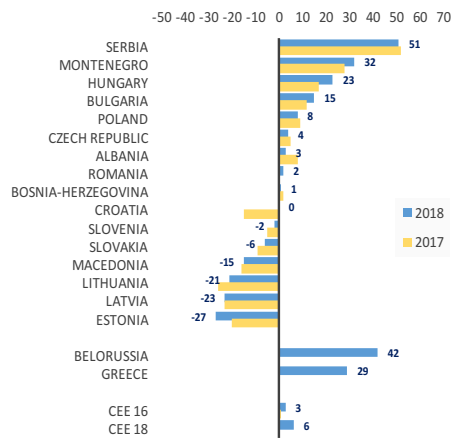
1-very loose; 5-very close (distribution of answers %)



Source: GKI - China-CEE Institute Nonprofit Ltd. survey

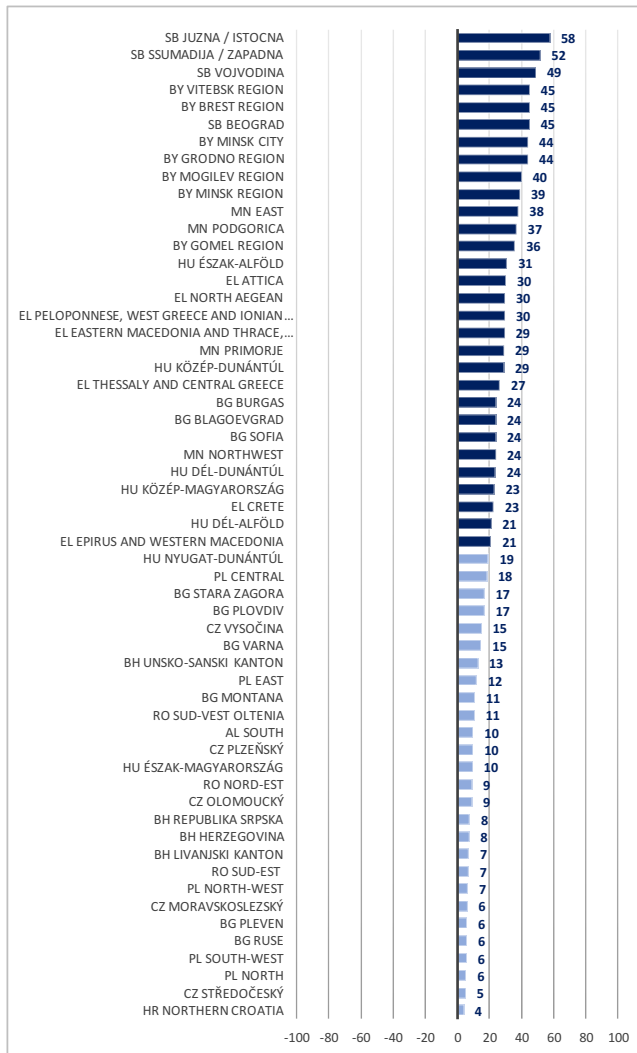
According to the opinion of the inhabitants, in addition to Serbia, the relationship between China and Montenegro is the second, Hungary is the third closest, while the Baltic states indicated the loosest connection. Compared to 2017, the country with the greatest improvement is Croatia, while the country with the greatest deterioration is Estonia.

**How strong do you think the relationship between China and your country?**  
 -100-very loose; +100-very close (average value)

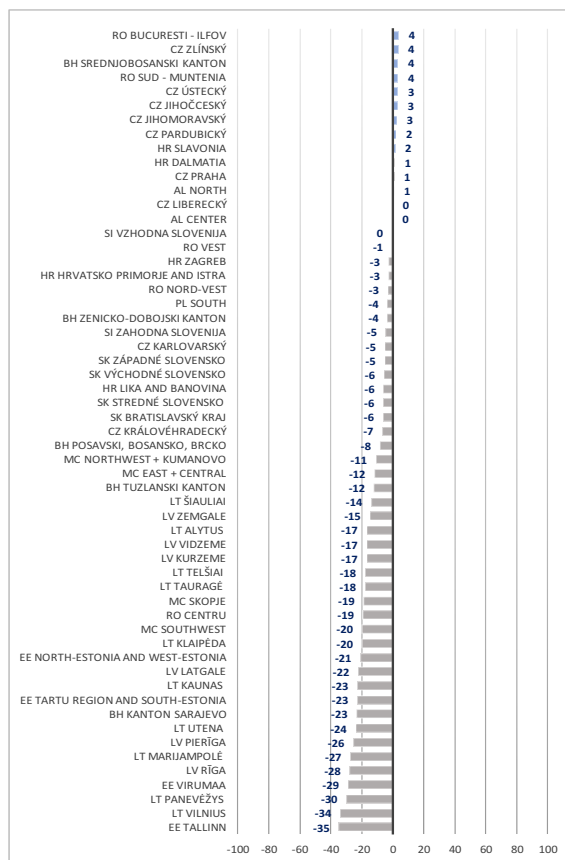


Source: GKI - China-CEE Institute Nonprofit Ltd. Survey

**How strong do you think the relationship between China and your country?**  
 -100-very loose; +100-very close (average value)







Source: GKI - China-CEE Institute Nonprofit Ltd. survey

By NUTS2 regions - similarly to 2017 - the inhabitants of the following three Serbian regions:

- Juzna / Istocna (very close with +58 on the scale of -100-+100)
- Ssumadija / Zapadna (very close with +52)
- Vojvodina (very close with +49)

perceive the strongest connection with China. In addition to the above six Belorussian and one other Serbian region is amongst the TOP10 region in CEE (value between +39 and +45). In the other end of the regional list, there are 20 Baltic, 4 Macedonian, 2 Bosnian and 1 Romanian regions, which indicated looser than neutral connection (between -10 and -35 on the scale of -100-+100).

## **7. The evaluation of the possible impact of the new Silk Road (Belt and Road) Initiative**

37% of people (compared to 34% in 2017) in the CEE 16 countries consider the possible impact of the new Silk Road Initiative (which aims to strengthen trade and economic relations between China and CEE countries) in the next 5 years fruitful (17% considers it very fruitful vs. 14% in 2017). On the other hand, 10% calculates with moderate impact (no change over 2017), while only 6% thinks that this Initiative will have no impact at all (+ 1 percentage point over 2017). The remaining is neutral in this question. The proportion of those, who considers a very fruitful impact, is the highest in the following countries:

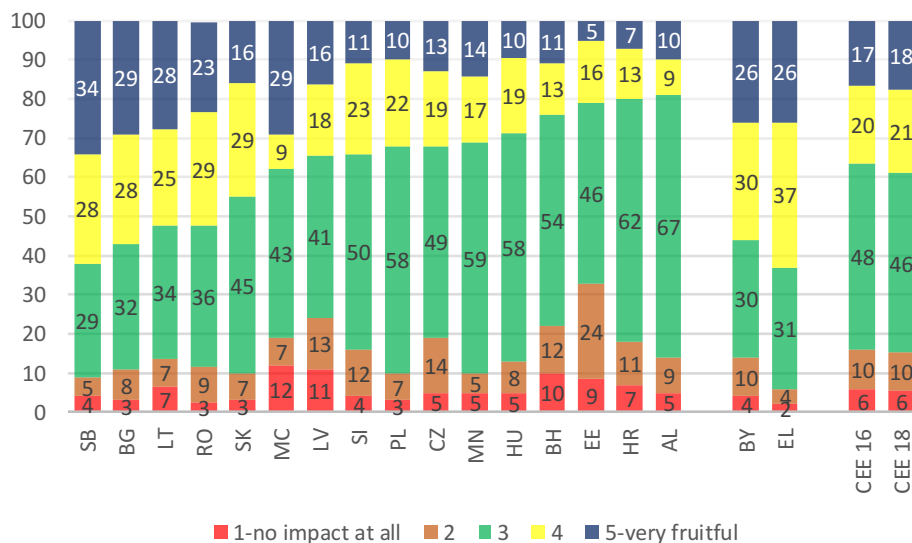
- Serbia,
- Bulgaria,
- Lithuania (despite the loose relationship, they are confident in the possible impact of the new Silk Road Initiative),

while the highest proportion of pessimistic was indicated in:

- Estonia,
- Latvia,
- and Bosnia-Herzegovina.

**How do you consider the possible impact of the new Silk Road Initiative in the next 5 years, which aims to strengthen trade and economic relations between China and your country?**

1-no impact at all; 5-very fruitful (distribution of answers %)

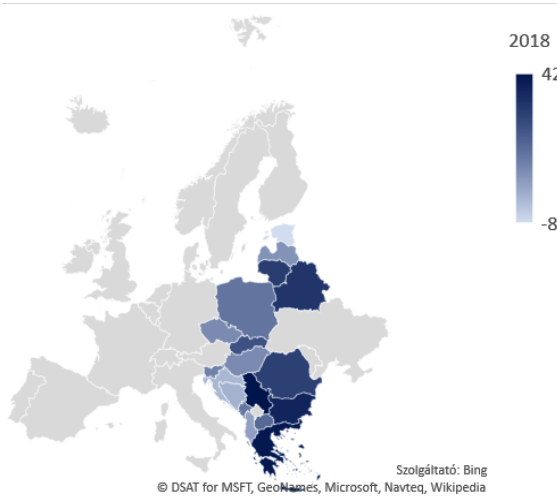
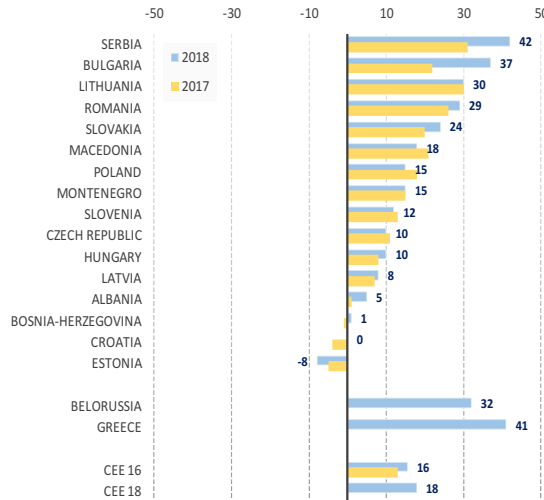


Source: GKI - China-CEE Institute Nonprofit Ltd. survey

On the -100+100 scale – just like in 2017 – the inhabitants of Serbia consider the possible impact of the new Silk Road Initiative in the next 5 years the most fruitful (+42 vs. +31 in 2017), followed by Bulgaria (+37 vs. +22 in 2017) and Lithuania (+30 just like in 2017), while inhabitants of Estonia, Croatia and Bosnia-Herzegovina are the most pessimistic in this question (similarly to 2017). The average value is +16 (vs. +13 in 2017), which means a little positive than average and improving consideration for the whole surveyed region. With the two new countries included in the survey, the average is +18. Compared to 2017, countries with the greatest improvement are Bulgaria and Serbia, while the countries with the greatest deterioration Estonia, Macedonia and Poland.

**How do you consider the possible impact of the new Silk Road Initiative in the next 5 years, which aims to strengthen trade and economic relations between China and your country?**

-100-no impact at all; +100-very fruitful (average value)

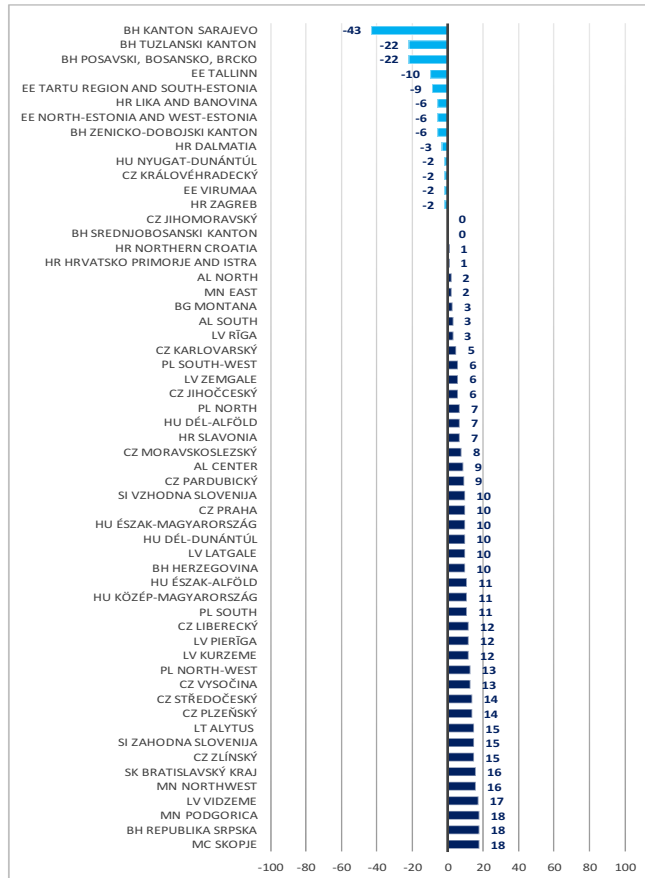


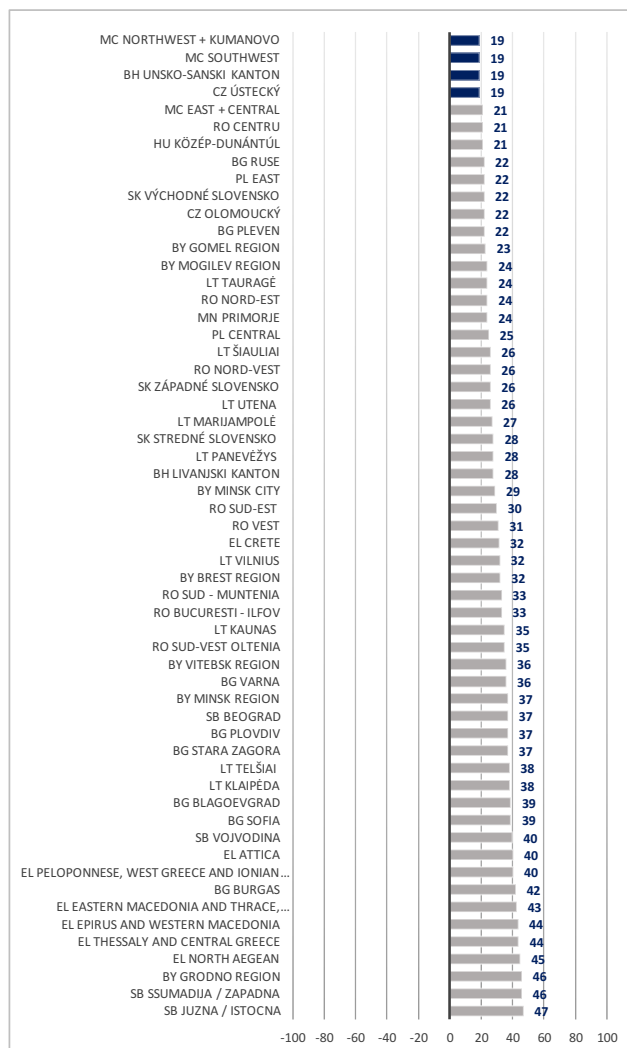
Source: GKI - China-CEE Institute Nonprofit Ltd. Survey

## How do you consider the possible impact of the new Silk Road Initiative in the next 5 years, which aims to strengthen trade and economic relations

### between China and your country?

-100-no impact at all; +100-very fruitful (average value)





Source: GKI - China-CEE Institute Nonprofit Ltd. survey

By NUTS2 regions, the TOP region in the CEE countries, which consider the possible impact of the new Silk Road Initiative in the next 5 years will be outstanding fruitful is Juzna / Istocna (Serbia), with +47 value on the scale of -100-+100. This was followed by Bulgarian, Belorussian, Serbian and Greek regions, with values above +40. At the lower end of the regional list are 4 Bosnian, 3 Estonian and a Croatian region, which don't believe in any impact of this Initiative (values between -6 and -43).

## 8. Country profiles

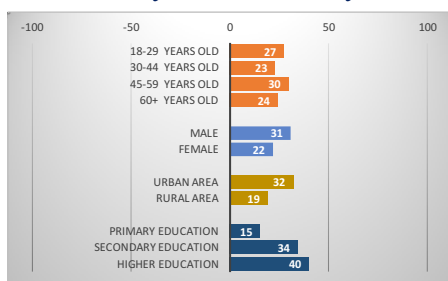
### Albania

Inhabitants of Albania evaluate China's economic development - on the scale of -100 and +100 - in the last 2 years fast (+26), slower than in 2017 (+34), but slower than the CEE 16 average (+43), which is the last place in rankings of the surveyed countries. By age groups, the representatives of the 18-29 and the 45-59 years old, by sex, the men, by township, the urban people, by the level of education, the secondary and the higher educated people rated above the Albanian average.

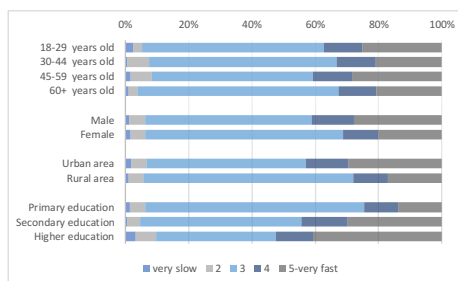
#### How do you evaluate China's economic development in the last 2 years?

average value

-100-very slow +100-very fast



distribution of answers %



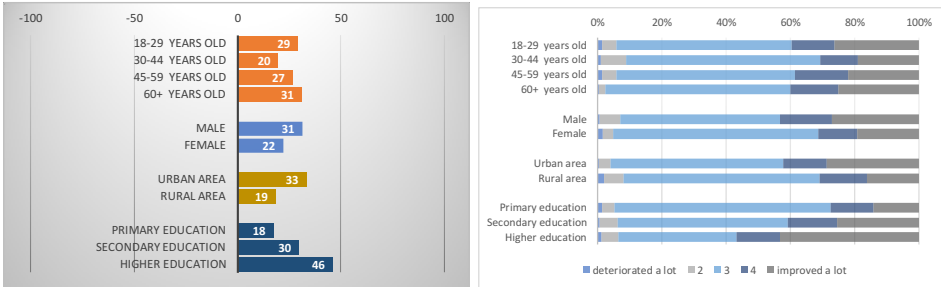
Source: GKI - China-CEE Institute Nonprofit Ltd. survey

By the opinion of the Albanian people China's importance in the world improved over the last 5 years (+27 vs. +34 in 2017), but it is under the CEE 16 average (+45), which is the last place in rankings of the surveyed countries. By age groups, the representatives of the 18-29 and the 60+ years old people, by sex the men, by township the urban people, by the level of education, the secondary and the higher educated people rated above the Albanian average.

## How has China's importance in the world changed over the last 5 years? average value

-100- deteriorated a lot +100- improved a lot

distribution of answers %



Source: GKI - China-CEE Institute Nonprofit Ltd. survey

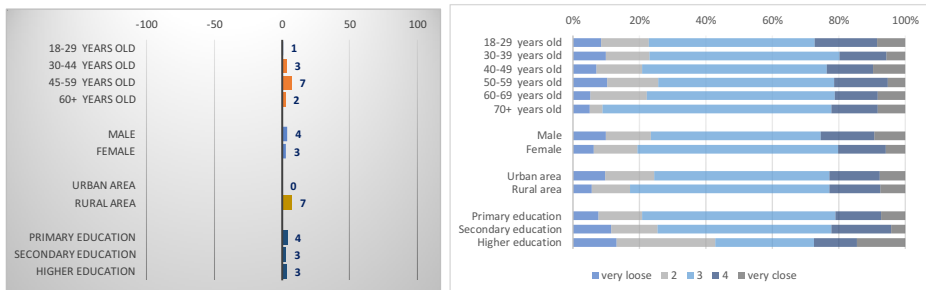
Inhabitants of Albanian evaluate the relationship between China and Albania - on the scale of -100 and +100 – a bit closer than neutral (+3 vs. +8 in 2017), which equals the CEE 16 average (+3), and which is the 7<sup>th</sup> place in rankings of the surveyed countries. By age groups, the representatives of the 45-59 years old, by township, the rural people rated above the Albanian average.

## How strong do you think the relationship between China and your country? average value

average value

-100-very loose; +100-very close

distribution of answers %



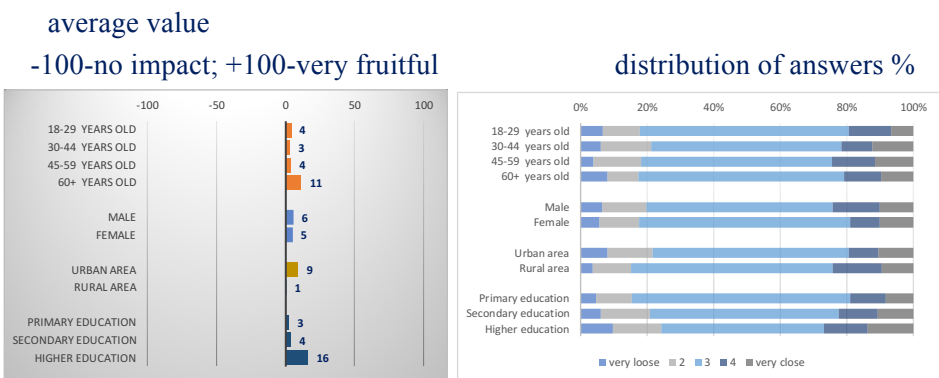
Source: GKI - China-CEE Institute Nonprofit Ltd. survey

Albanian consider the possible impact of the new Silk Road Initiative - which aims to strengthen trade and economic relations between China and Albania - in the next 5 years neutral (+5 vs. +1 in 2017), at the same time



under the CEE 16 average (+16), which is the 13<sup>th</sup> place in rankings of the surveyed countries. By age groups, the representatives of the 60+ age group, by township, the urban people, by the level of education, the higher educated people rated above the Albanian average.

**How do you consider the possible impact of the new Silk Road Initiative in the next 5 years, which aims to strengthen trade and economic relations between China and your country?**

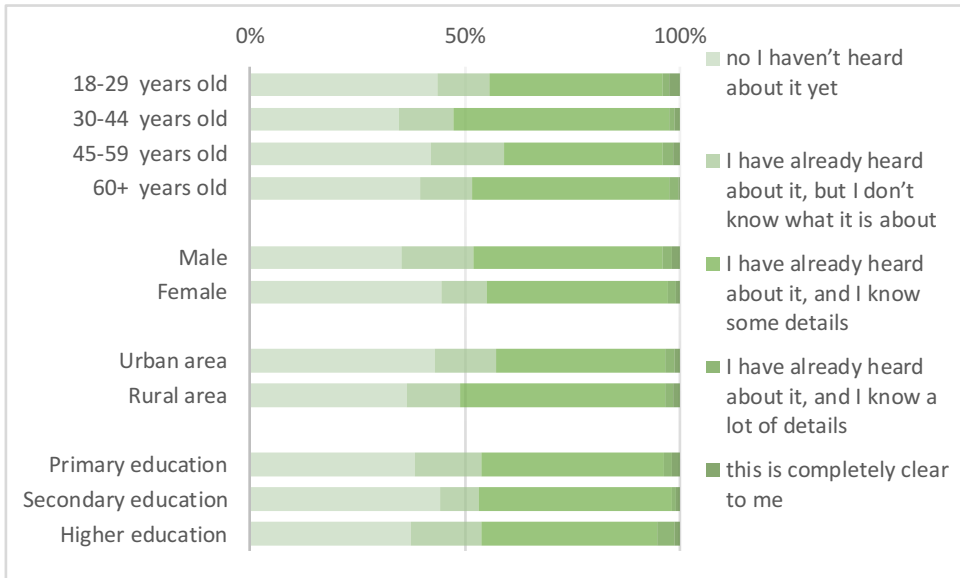


Source: GKI - China-CEE Institute Nonprofit Ltd. survey

40% of the Albanian hasn't heard about the cooperation between China and the Central and Eastern European countries (16+1), in which Albania participates. Out of the remaining 60% (furthermore it is considered as 100%), 23% has already heard about it, but doesn't know what it is about, while 72% knows some, 3% a lot of details, and only 2% indicated that it is completely clear to him/her.

**Have you ever heard about the cooperation between China and the Central and Eastern European countries (16+1), in which your country participates?**

(distribution of answers %)



Source: GKI - China-CEE Institute Nonprofit Ltd. survey

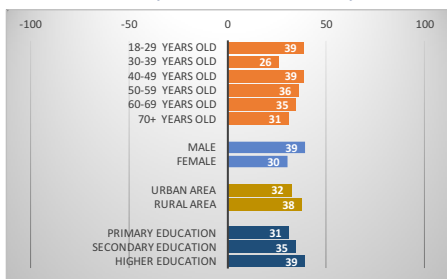
## Bosnia-Herzegovina

Inhabitants of Bosnia-Herzegovina evaluate China's economic development - on the scale of -100 and +100 - in the last 2 years fast (+35), faster than in 2017 (+27), but slower than the CEE 16 average (+43), which is the 12<sup>th</sup> place in rankings of the surveyed countries. By age groups, the representatives of the 18-29, the 40-49 and the 50-59 years old, by sex, the men, by township, the rural people, by level of education, the higher educated people rated above the Bosnian average.

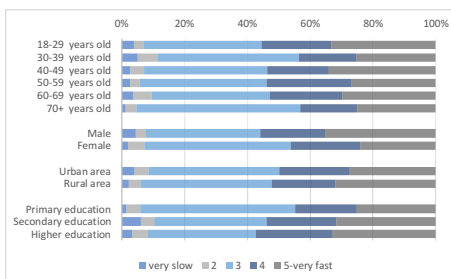
### How do you evaluate China's economic development in the last 2 years?

average value

-100-very slow +100-very fast



distribution of answers %

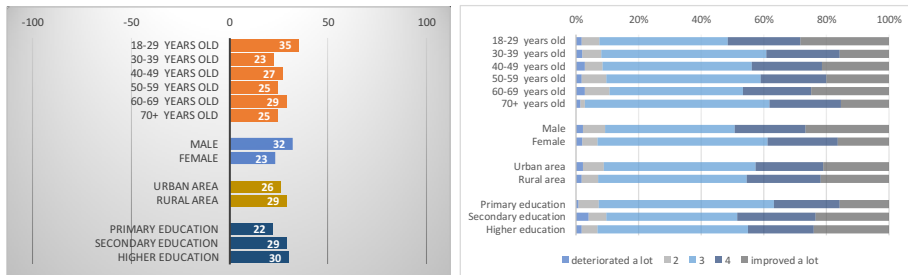


Source: GKI - China-CEE Institute Nonprofit Ltd. survey

By the opinion of the Bosnian people China's importance in the world improved over the last 5 years (+28 vs. +24 in 2017), but it is under the CEE 16 average (+45), which is the 15<sup>th</sup> place in rankings of the surveyed countries. By age groups, the most the representatives of the 18-29 and the 60-69 years old people, by township, the rural people, by the level of education, the secondary and the higher educated people rated above the Bosnian average.

## How has China's importance in the world changed over the last 5 years? average value

-100- deteriorated a lot +100- improved a lot      distribution of answers %

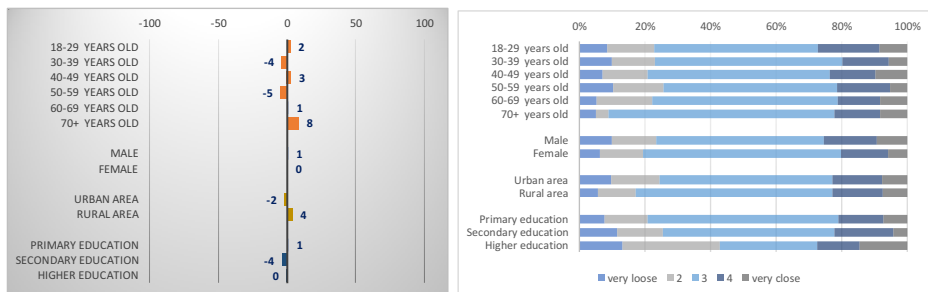


Source: GKI - China-CEE Institute Nonprofit Ltd. survey

Inhabitants of Bosnia evaluate the relationship between China and Bosnia - on the scale of -100 and +100 - neither strong nor loose (+1 vs. +2 in 2017), which is a bit under the CEE 16 average (+3), which is the 9<sup>th</sup> place in rankings of the surveyed countries. By age groups, the representatives of the 18-29, the 40-49 and the 70+ age group, by township, the rural people rated above the Bosnian average.

## How strong do you think the relationship between China and your country? average value

-100-very loose; +100-very close      distribution of answers %

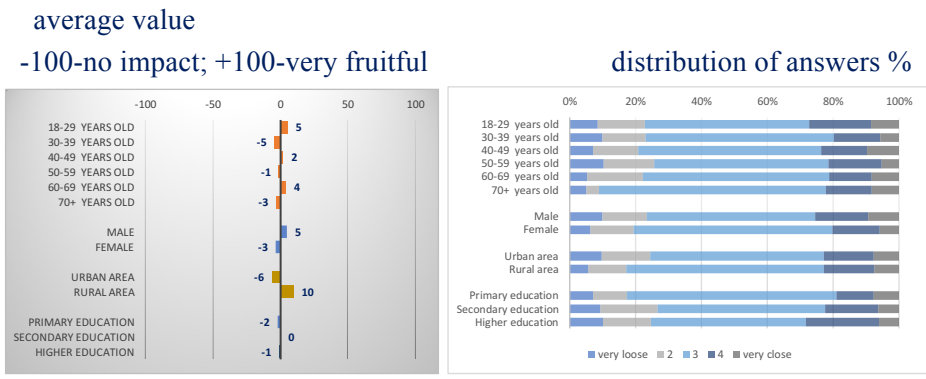


Source: GKI - China-CEE Institute Nonprofit Ltd. survey

Bosnians consider the possible impact of the new Silk Road Initiative - which aims to strengthen trade and economic relations between China and Bosnia-Herzegovina - in the next 5 years neutral (+1 vs. -1 in 2017), at the same time under the CEE 16 average (+16), which is the 14<sup>th</sup> place in

rankings of the surveyed countries. By age groups, the representatives of the 18-29, the 40-49 and the 70+ age group, by sex, the men, by township, the rural people rated above the Bosnian average.

**How do you consider the possible impact of the new Silk Road Initiative in the next 5 years, which aims to strengthen trade and economic relations between China and your country?**

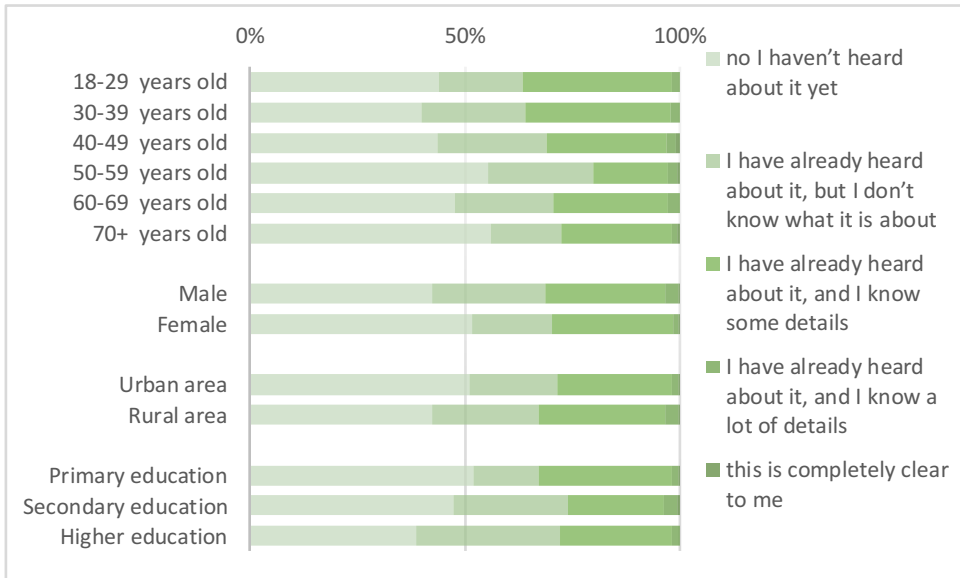


Source: GKI - China-CEE Institute Nonprofit Ltd. survey

47% of the Bosnians hasn't heard about the cooperation between China and the Central and Eastern European countries (16+1), in which Bosnia-Herzegovina participates. Out of the remaining 53% (furthermore it is considered as 100%), 42% has already heard about it, but doesn't know what it is about, while 53% knows some, 4% a lot of details, and only 2% indicated that it is completely clear to him/her.

**Have you ever heard about the cooperation between China and the Central and Eastern European countries (16+1), in which your country participates?**

(distribution of answers %)



Source: GKI - China-CEE Institute Nonprofit Ltd. survey

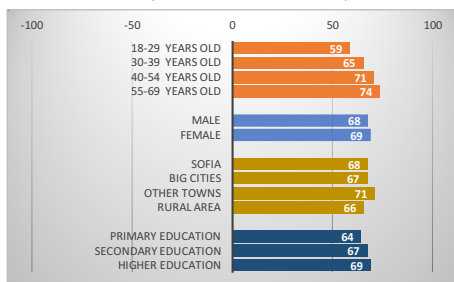
## Bulgaria

Inhabitants of Bulgaria evaluate China's economic development - on the scale of -100 and +100 - in the last 2 years very fast (+68), moreover faster than in 2017 (+57), and faster than the CEE 16 average (+43), which means the 1<sup>st</sup> place in rankings of the CEE 16 countries. By age groups, the representatives of the 40-54 and the 55-69 years old, by township, the people who live in other towns, by the level of education, the higher educated people rated above the Bulgarian average.

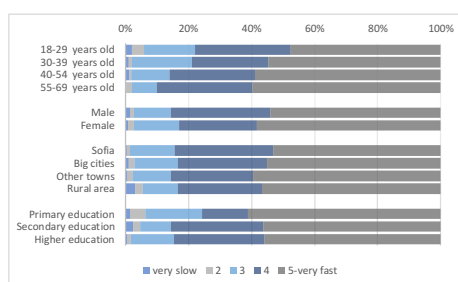
### How do you evaluate China's economic development in the last 2 years?

average value

-100-very slow +100-very fast



distribution of answers %



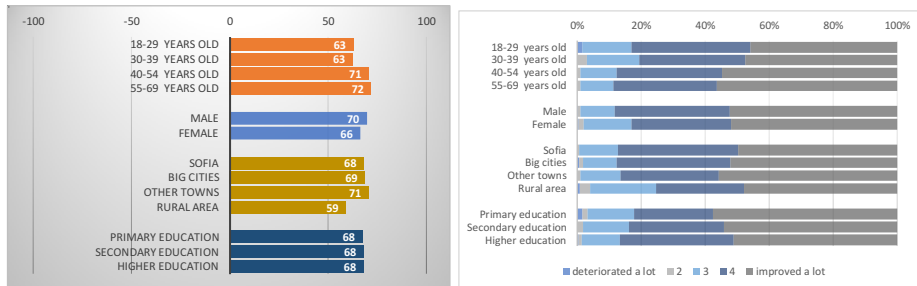
Source: GKI - China-CEE Institute Nonprofit Ltd. survey

By the opinion of the Bulgarian people China's importance in the world improved a lot over the last 5 years very much (+68, this is above the 2017 value, which was +53), which is above the CEE 16 average (+45), and which is the 1<sup>st</sup> place in rankings of the CEE 16 countries. By age groups, the most the representatives of the 40-54 and the 55-69 years old, by sex, the men, by township, the people who live in big cities and other towns rated above the Bulgarian average.

## How has China's importance in the world changed over the last 5 years? average value

-100- deteriorated a lot +100- improved a lot

distribution of answers %



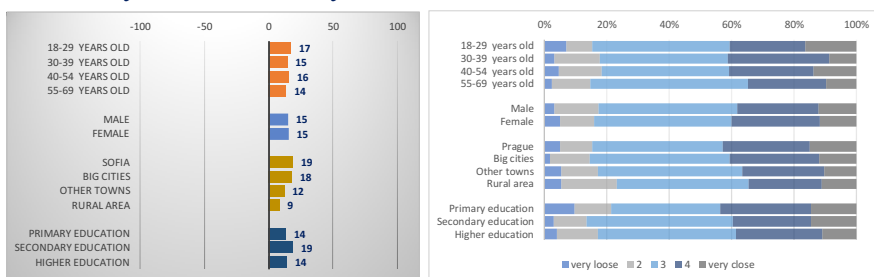
Source: GKI - China-CEE Institute Nonprofit Ltd. survey

Inhabitants of Bulgaria evaluate the relationship between China and Bulgaria - on the scale of -100 and +100 – slightly strong (+15), which is stronger than in 2017 (+12). This value is above the CEE 16 average (+3), and it means the 4<sup>th</sup> place in rankings of the CEE 16 countries. By age groups, the representatives of the 18-29 and 40-54 years old, by township, the people who live in the capital and other big cities, by the level of education, the secondary educated people rated above the Bulgarian average.

## How strong do you think the relationship between China and your country? average value

-100-very loose; +100-very close

distribution of answers %



Source: GKI - China-CEE Institute Nonprofit Ltd. survey

Bulgarian people consider the possible impact of the new Silk Road Initiative - which aims to strengthen trade and economic relations between



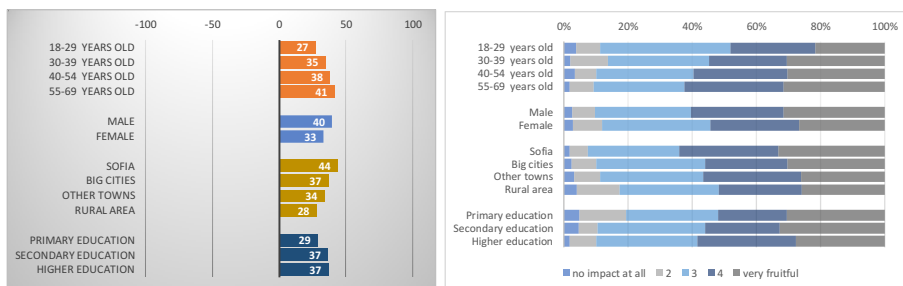
China and Bulgaria in the next 5 years positive (+37), more positive than in 2017 (+22). On the other hand, this value is above the CEE 16 average (+16) and means the 2<sup>nd</sup> place in rankings of the CEE 16 countries. By age groups, the representatives of 40-54 and 55-69 years old, by sex, the men, by settlement type, those who live in Sofia rated above the Bulgarian average.

**How do you consider the possible impact of the new Silk Road Initiative in the next 5 years, which aims to strengthen trade and economic relations between China and your country?**

average value

-100-no impact; +100-very fruitful

distribution of answers %

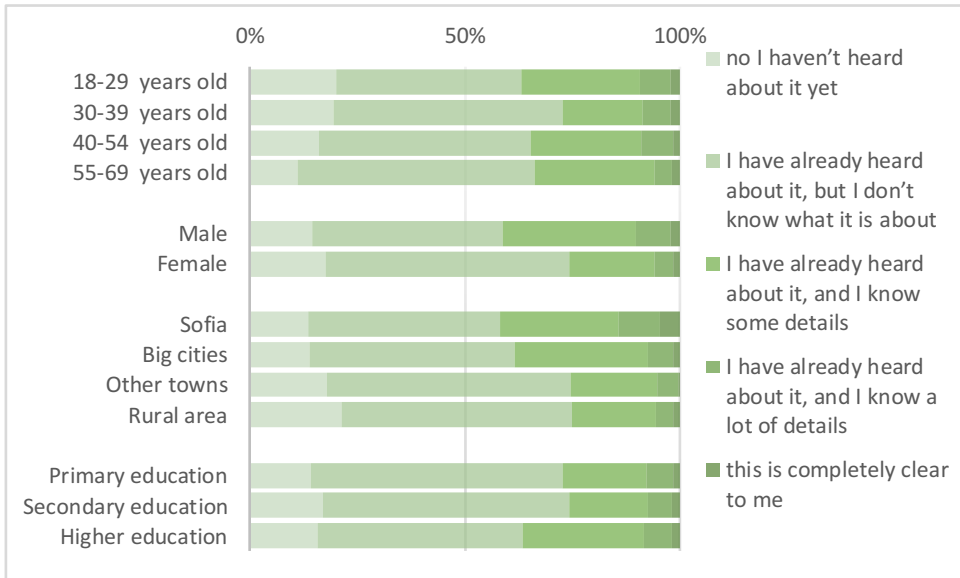


Source: GKI - China-CEE Institute Nonprofit Ltd. survey

16% of the Bulgarians hasn't heard about the cooperation between China and the Central and Eastern European countries (16+1), in which Bulgaria participates. Out of the remaining 84% (furthermore it is considered as 100%), 61% has already heard about it, but doesn't know what it is about, while 30% knows some, 7% a lot of details, and 2% indicated that it is completely clear to him/her.

**Have you ever heard about the cooperation between China and the Central and Eastern European countries (16+1), in which your country participates?**

(distribution of answers %)

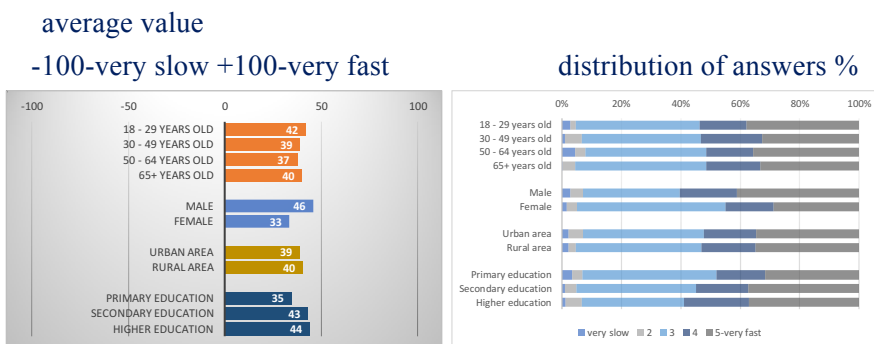


Source: GKI - China-CEE Institute Nonprofit Ltd. survey

## Croatia

Inhabitants of Croatia evaluate China's economic development - on the scale of -100 and +100 - in the last 2 years fast (+39), but a bit slower than last year (+40), but slower than the CEE 16 average (+43), which means the 8<sup>th</sup> place in rankings of the CEE 16 countries. By age groups, the 18-29 and the 65+ years old, by sex, the men, by the level of education, the secondary and the higher educated people rated above the Croatian average.

### How do you evaluate China's economic development in the last 2 years?



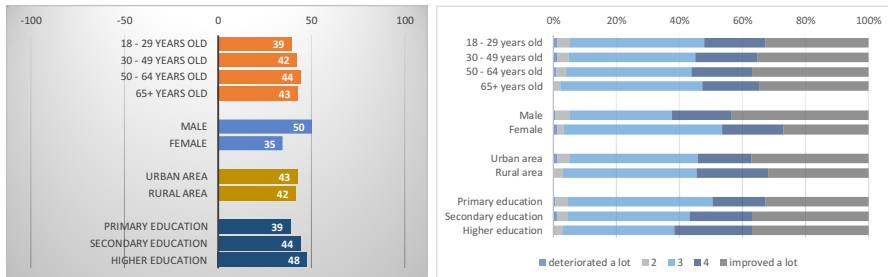
Source: GKI - China-CEE Institute Nonprofit Ltd. survey

By the opinion of the Croatian people, China's importance in the world improved the last 5 years (+42 vs. +43 in 2017), which is under the CEE 16 average (+45), and which is the 9<sup>th</sup> place in rankings of the CEE 16 countries. By age groups, the 50-64 and the 65+ years old, by sex, the men, by the level of education, the secondary and the higher educated people rated above the Croatian average.

## How has China's importance in the world changed over the last 5 years? average value

-100- deteriorated a lot +100- improved a lot

distribution of answers %



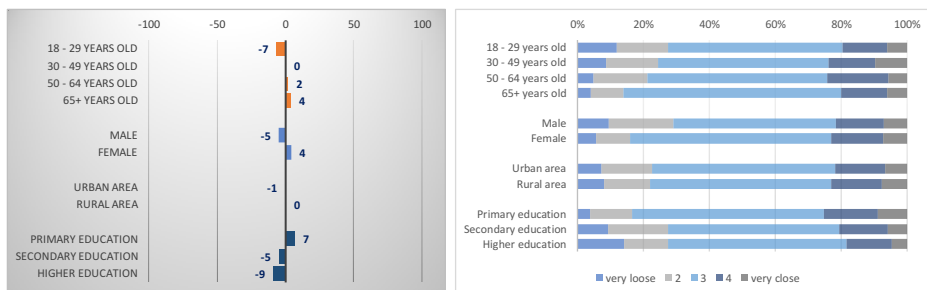
Source: GKI - China-CEE Institute Nonprofit Ltd. survey

Inhabitants of Croatia evaluate the relationship between China and Croatia - on the scale of -100 and +100 – neutral (0), which means much closer than in 2017 (-15). This value is under the CEE 16 average (+3), and it means the 10<sup>th</sup> place in rankings of the CEE 16 countries. By age groups, the 50-64 and the 65+ years old, by sex, the women, by the level of education, the primary educated people rated above the Croatian average.

## How strong do you think the relationship between China and your country? average value

-100-very loose; +100-very close

distribution of answers %

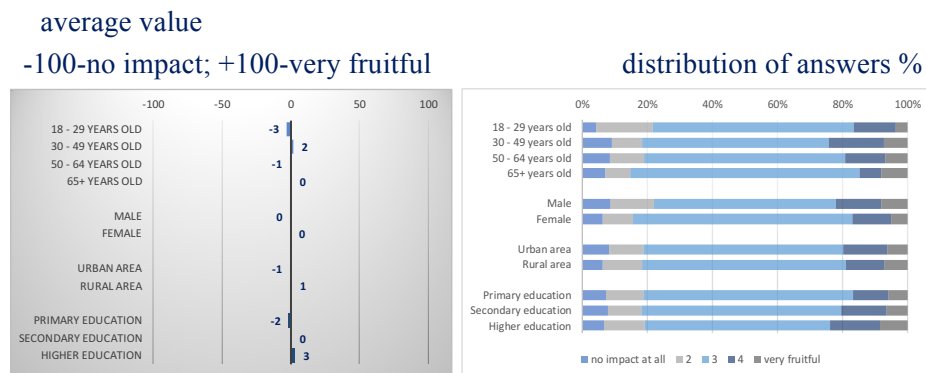


Source: GKI - China-CEE Institute Nonprofit Ltd. survey

Croatians consider the possible impact of the new Silk Road Initiative - which aims to strengthen trade and economic relations between China and Croatia - in the next 5 years neutral (0), better than a year ago (-4). On the other hand, this value is under the CEE 16 average (+16) and means the

15<sup>th</sup> place in rankings of the CEE 16 countries. By age groups, the 30-49 years old, by the level of education, the higher educated people rated above the Croatian average.

**How do you consider the possible impact of the new Silk Road Initiative in the next 5 years, which aims to strengthen trade and economic relations between China and your country?**

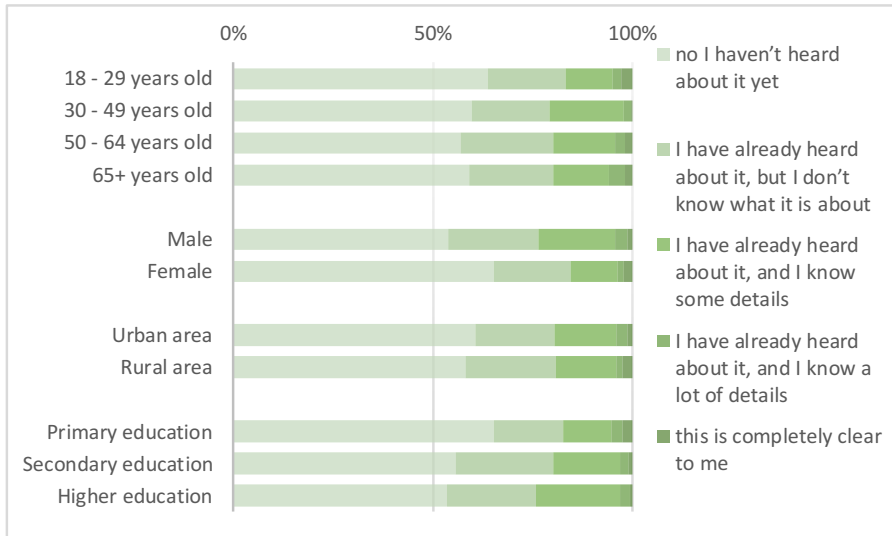


Source: GKI - China-CEE Institute Nonprofit Ltd. survey

60% of the Croatian people hasn't heard about the cooperation between China and the Central and Eastern European countries (16+1), in which Croatia participates. Out of the remaining 40% (furthermore it is considered as 100%), 53% has already heard about it, but doesn't know what it is about, while 38% knows some, 5% knows a lot of details, and 5% indicated that it is completely clear to him/her.

**Have you ever heard about the cooperation between China and the Central and Eastern European countries (16+1), in which your country participates?**

(distribution of answers %)

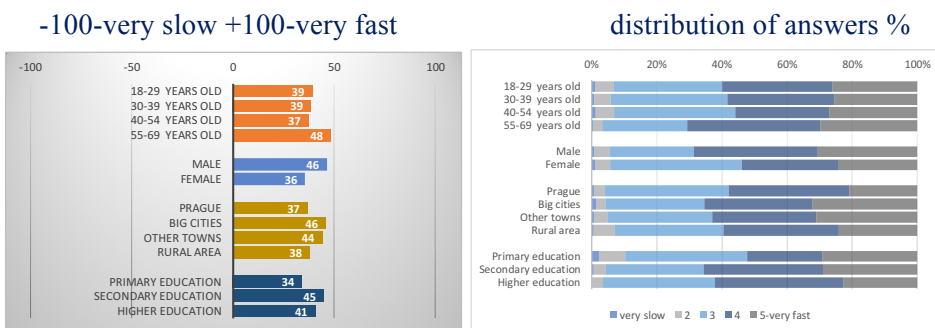


Source: GKI - China-CEE Institute Nonprofit Ltd. survey

## Czech Republic

Inhabitants of the Czech Republic evaluate China's economic development - on the scale of -100 and +100 - in the last 2 years fast (+41), faster than in 2017 (+34), but slower than the CEE 16 average (+43), which means the 7<sup>th</sup> place in rankings of the CEE 16 countries. By age groups, the representatives of 55-69 years old, by sex, the men, by township, the people who live in big cities and other towns, by the level of education, the secondary educated people rated above the Czech average.

### How do you evaluate China's economic development in the last 2 years? average value



Source: GKI - China-CEE Institute Nonprofit Ltd. survey

By the opinion of the Czech people China's importance in the world improved over the last 5 years (+37 vs. +36 in 2017), which is under the CEE 16 average (+45), and which is the 11<sup>th</sup> place in rankings of the CEE 16 countries. By age groups, the representatives of 55-69 years old, by sex, the men, by township, the most the people who live in big cities and other towns, by the level of education, the secondary and higher educated people rated above the Czech average.

## How has China's importance in the world changed over the last 5 years?

average value

-100- deteriorated a lot +100- improved a lot

distribution of answers %



Source: GKI - China-CEE Institute Nonprofit Ltd. survey

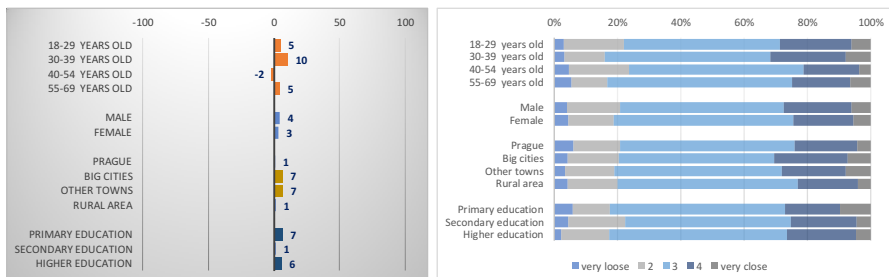
Inhabitants of the Czech Republic evaluate the relationship between China and the Czech Republic - on the scale of -100 and +100 – slightly strong (+4), a bit looser than in 2017 (+5). This value is just above the CEE 16 average (+3), and it means the 6<sup>th</sup> place in rankings of the CEE 16 countries. By age groups, the most the representatives of 30-39 years old, by township, the people who live in big cities and in other towns, by the level of education, the primary and the higher educated people rated above the Czech average.

## How strong do you think the relationship between China and your country?

average value

-100-very loose; +100-very close

distribution of answers %



Source: GKI - China-CEE Institute Nonprofit Ltd. survey

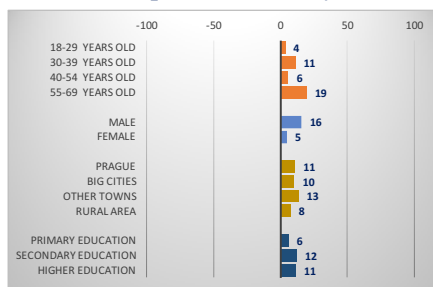


Czechs consider the possible impact of the new Silk Road Initiative - which aims to strengthen trade and economic relations between China and the Czech Republic - in the next 5 years positive (+10), a bit less positive than in 2017 (+11). On the other hand, this value is under the CEE 16 average (+16) and means the 10<sup>th</sup> place in rankings of the CEE 16 countries. By age groups, the representatives of the 30-39 and the 55-69 years old, by sex, the men, by township, the people who live in Prague and in other towns, by the level of education, the secondary and higher educated people rated above the Czech average.

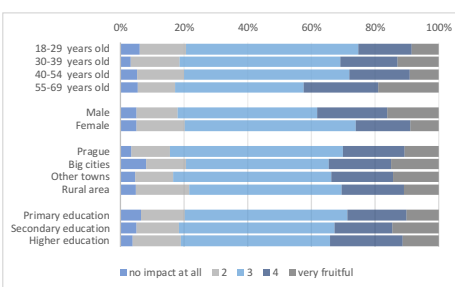
**How do you consider the possible impact of the new Silk Road Initiative in the next 5 years, which aims to strengthen trade and economic relations between China and your country?**

average value

-100-no impact; +100-very fruitful



distribution of answers %

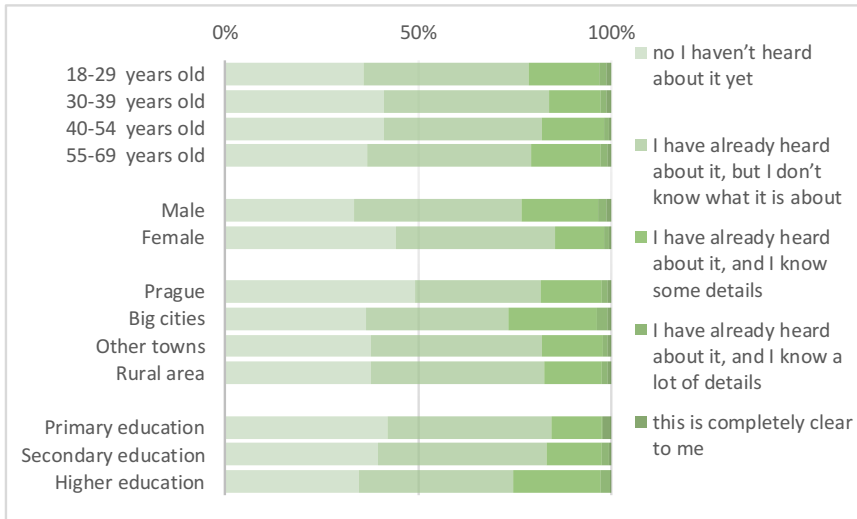


Source: GKI - China-CEE Institute Nonprofit Ltd. survey

39% of the Czechs hasn't heard about the cooperation between China and the Central and Eastern European countries (16+1), in which the Czech Republic participates. Out of the remaining 61% (furthermore it is considered as 100%), 69% has already heard about it, but doesn't know what it is about, while 27% knows some, 3% a lot of details, and only 1% indicated that it is completely clear to him/her.

**Have you ever heard about the cooperation between China and the Central and Eastern European countries (16+1), in which your country participates?**

(distribution of answers %)

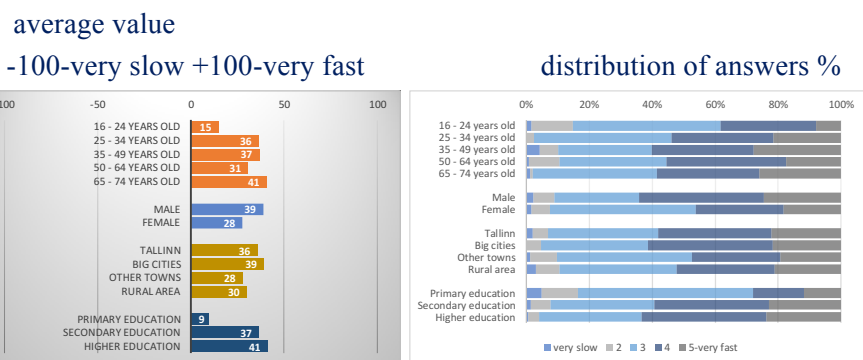


Source: GKI - China-CEE Institute Nonprofit Ltd. survey

## Estonia

Inhabitants of Estonia evaluate China's economic development - on the scale of -100 and +100 - in the last 2 years fast (+33), but not as fast as a year ago (+41), and slower than the CEE 16 average (+43), which means the 14<sup>th</sup> place in rankings of the CEE 16 countries. By age groups, the 25-34, the 35-49 and the 65-74 age group, by sex, the men, by township, the people who live in big cities and Tallinn, by the level of education, the secondary and higher educated people rated above the Estonian average.

### How do you evaluate China's economic development in the last 2 years?

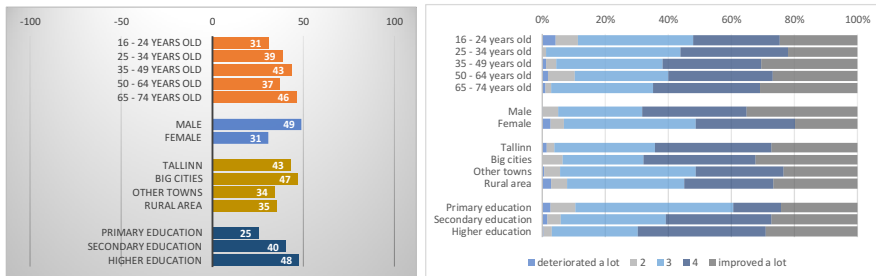


Source: GKI - China-CEE Institute Nonprofit Ltd. survey

By the opinion of the Estonian people China's importance in the world improved over the last 5 years (+40), which is less than in the 2017 survey (+47), which is under the CEE 16 average (+45) and which is the 10<sup>th</sup> place in rankings of the CEE 16 countries. By age groups, the 35-49 and the 65-74 age group, by sex, the men, by township, the people who live in big cities and Tallinn, by the level of education, the secondary and higher educated people rated above the Estonian average.

## How has China's importance in the world changed over the last 5 years? average value

-100- deteriorated a lot +100- improved a lot      distribution of answers %



Source: GKI - China-CEE Institute Nonprofit Ltd. survey

Inhabitants of Estonia evaluate the relationship between China and Estonia - on the scale of -100 and +100 - loose (-27), looser than in 2017 (-20). This value is under the CEE 16 average (+3), and it means the last place in rankings of the CEE 16 countries. By age groups, the 50-64 and the 65-74 years old, by sex, the men, by township, the people who live in big cities and Tallinn, by the level of education, the secondary and higher educated people rated under the Estonian average.

## How strong do you think the relationship between China and your country? average value

-100-very loose; +100-very close      distribution of answers %

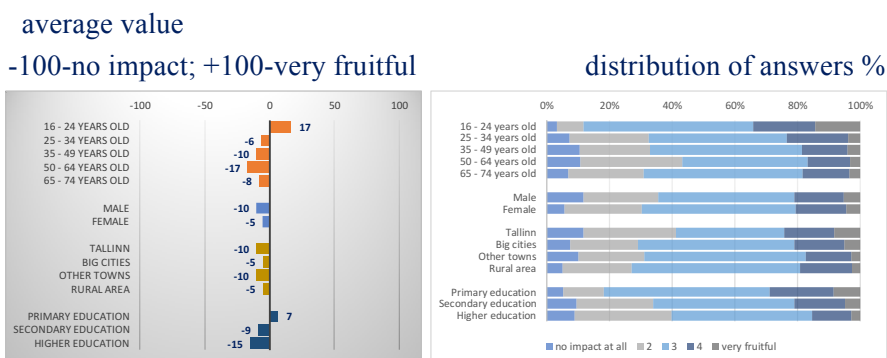


Source: GKI - China-CEE Institute Nonprofit Ltd. survey

Estonians consider the possible impact of the new Silk Road Initiative - which aims to strengthen trade and economic relations between China and Estonia - in the next 5 years slightly negative (-8), which is worse than a

year ago (-5). On the other hand, this value is under the CEE 16 average (+16) and means the last place in rankings of the CEE 16 countries. By age groups, the 35-49 and the 50-64 years old, by sex, the men, by township, the people who live in other towns and in Tallinn, by the level of education, the secondary and the higher educated people rated under the Estonian average.

**How do you consider the possible impact of the new Silk Road Initiative in the next 5 years, which aims to strengthen trade and economic relations between China and your country?**

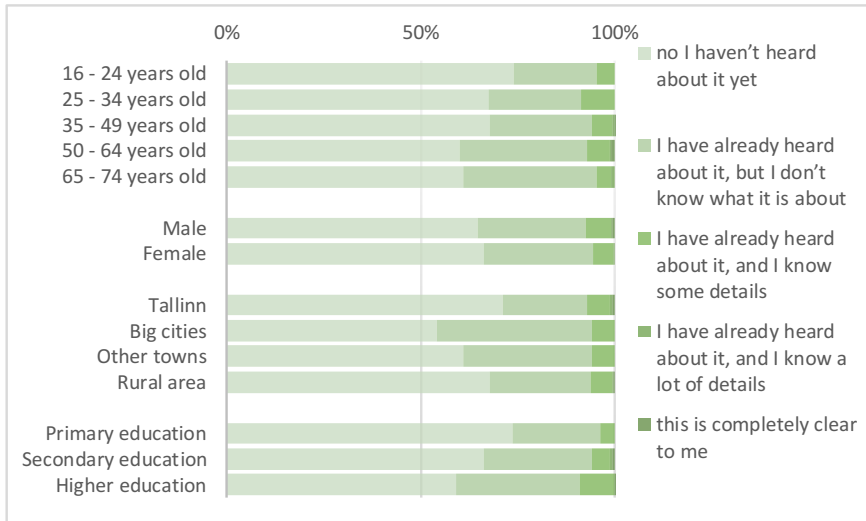


Source: GKI - China-CEE Institute Nonprofit Ltd. survey

66% of the Estonians hasn't heard about the cooperation between China and the Central and Eastern European countries (16+1), in which Estonia participates. Out of the remaining 34% (furthermore it is considered as 100%), 81% has already heard about it, but doesn't know what it is about, while 17% knows some, 1% a lot of details, and only 1% indicated that it is completely clear to him/her.

**Have you ever heard about the cooperation between China and the Central and Eastern European countries (16+1), in which your country participates?**

(distribution of answers %)



Source: GKI - China-CEE Institute Nonprofit Ltd. survey

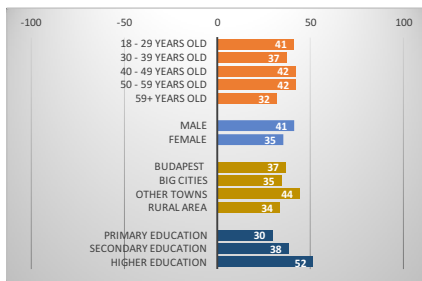
## Hungary

Inhabitants of Hungary evaluate China's economic development - on the scale of -100 and +100 - in the last 2 years fast (+38), faster than in last year (+33), but slower than the CEE 16 average (+43), which means the 11<sup>th</sup> place in rankings of the CEE 16 countries. By age groups, the 40-49 and the 50-59 years old, by sex, the men, by township, the people who live in other towns, by the level of education, the higher educated people rated above the Hungarian average.

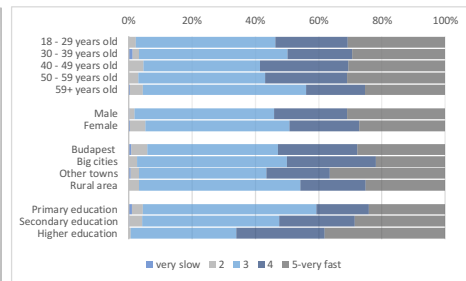
### How do you evaluate China's economic development in the last 2 years?

average value

-100-very slow +100-very fast



distribution of answers %



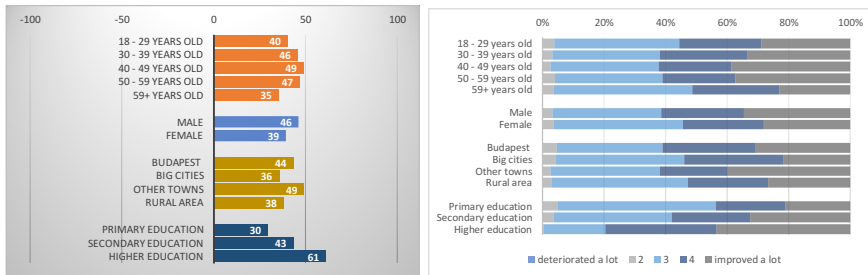
Source: GKI - China-CEE Institute Nonprofit Ltd. survey

By the opinion of the Hungarian people China's importance in the world improved over the last 5 years (+43, which is better value than the +36 in 2017), which is under the CEE 16 average (+45), and which is the 8<sup>th</sup> place in rankings of the CEE 16 countries. By age groups, the 30-39, the 40-49 and the 50-59 years old, by sex, the men, by township, the people who live in Budapest and in other towns, by the level of education, the higher educated people rated above the Hungarian average.

## How has China's importance in the world changed over the last 5 years? average value

-100- deteriorated a lot +100- improved a lot

distribution of answers %



Source: GKI - China-CEE Institute Nonprofit Ltd. survey

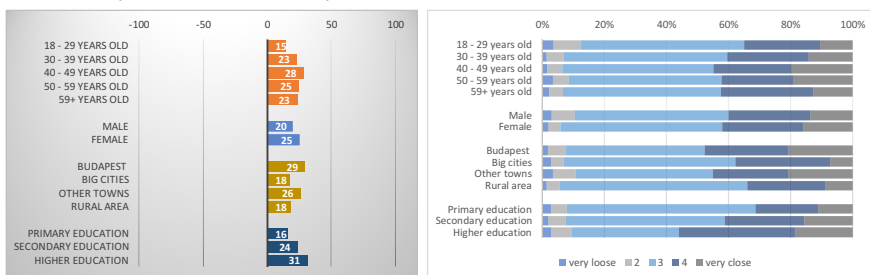
Inhabitants of Hungary evaluate the relationship between China and Hungary - on the scale of -100 and +100 – close (+23), closer than in 2017 (+17). This value is above the CEE 16 average (+3), and it means the 3<sup>rd</sup> place in rankings of the CEE 16 countries. By age groups, the 40-49 and the 50-59 years old, by sex, the women, by township, the most the people who live in Budapest and in other towns, by the level of education the secondary and higher educated people rated above the Hungarian average.

## How strong do you think the relationship between China and your country? average value

average value

-100-very loose; +100-very close

distribution of answers %



Source: GKI - China-CEE Institute Nonprofit Ltd. survey

Hungarians consider the possible impact of the new Silk Road Initiative - which aims to strengthen trade and economic relations between China and Hungary - in the next 5 years slightly positive (+10), more positive than in

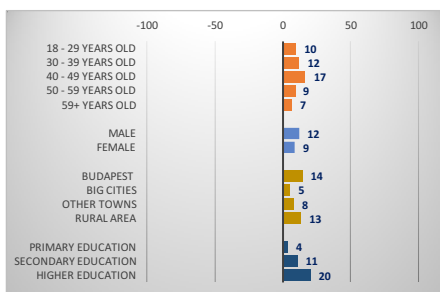


2017 (+8). On the other hand, this value is under the CEE 16 average (+16) and means the 11<sup>th</sup> place in rankings of the CEE 16 countries. By age groups, the 30-39 and the 40-49 years old group, by sex, the men, by township, the people who live in the capital and in rural area, by the level of education, the secondary and the higher educated people rated above the Hungarian average.

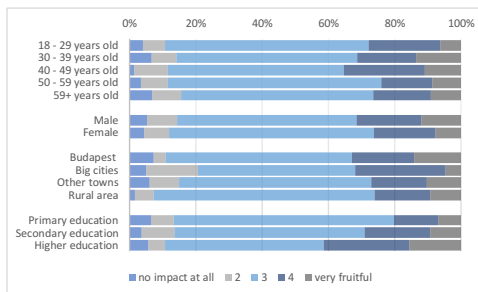
**How do you consider the possible impact of the new Silk Road Initiative in the next 5 years, which aims to strengthen trade and economic relations between China and your country?**

average value

-100-no impact; +100-very fruitful



distribution of answers %

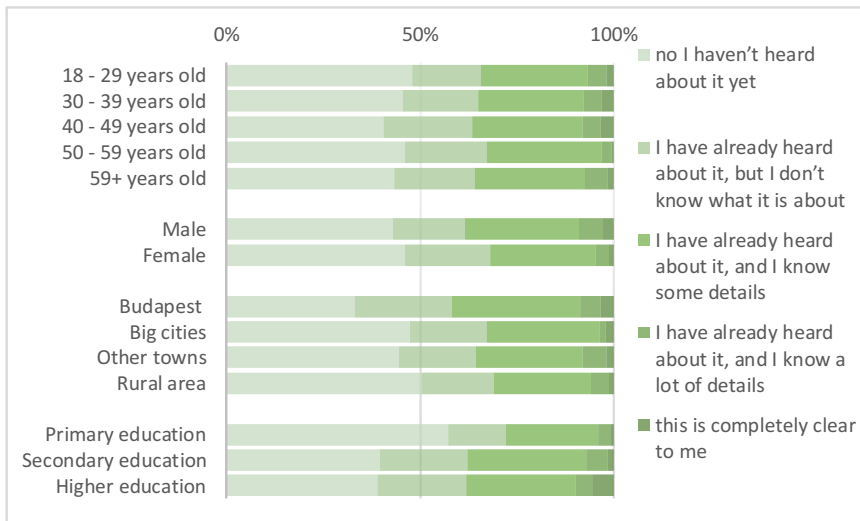


Source: GKI - China-CEE Institute Nonprofit Ltd. survey

45% of the Hungarians hasn't heard about the cooperation between China and the Central and Eastern European countries (16+1), in which Hungary participates (in 2017 this proportion was 38%). Out of the remaining 55% (furthermore it is considered as 100%), 37% has already heard about it, but doesn't know what it is about, while 51% knows some, 9% a lot of details, and only 4% indicated that it is completely clear to him/her (the latter was 2% in 2017).

**Have you ever heard about the cooperation between China and the Central and Eastern European countries (16+1), in which your country participates?**

distribution of answers %

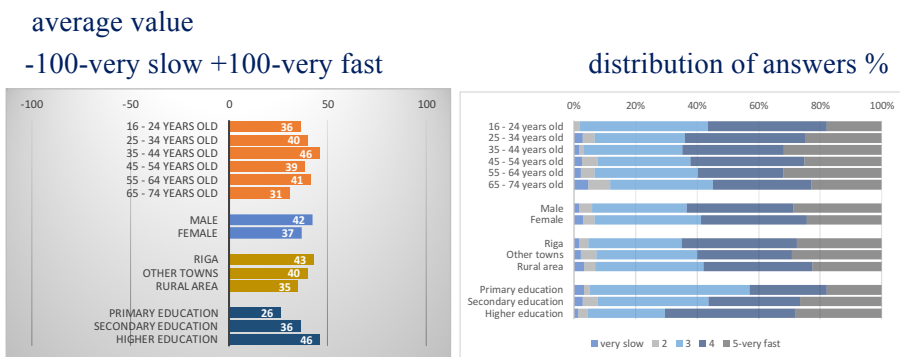


Source: GKI - China-CEE Institute Nonprofit Ltd. survey

## Latvia

Inhabitants of Latvia evaluate China's economic development - on the scale of -100 and +100 - in the last 2 years fast (+39), faster than in 2017 (+37), but slower than the CEE 16 average (+43), which means the 9<sup>th</sup> place in rankings of the CEE 16 countries. By age groups, the representatives of the 25-34, the 35-44 and the 55-64 years old, by sex, the men, by township, the people who live in Riga and in other towns, by the level of education, the higher educated people rated above the Latvian average.

### How do you evaluate China's economic development in the last 2 years?



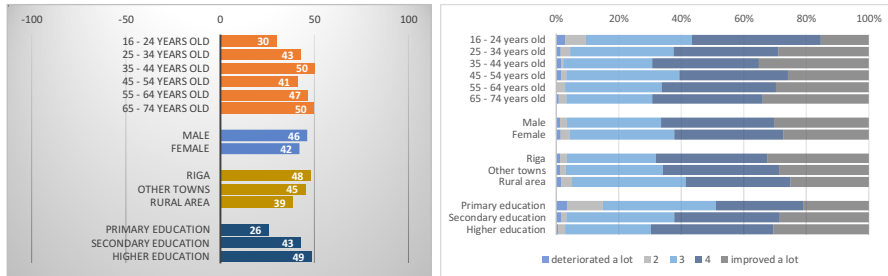
Source: GKI - China-CEE Institute Nonprofit Ltd. survey

By the opinion of the Latvian people China's importance in the world improved over the last 5 years (+44), which is a bit under the 2017 value (+45) and the CEE 16 average (+45), and which is the 7<sup>th</sup> place in rankings of the CEE 16 countries. By age groups, the representatives of the 35-44, the 55-64 and the 65-74 years old, by sex the men, by township, the people who live in Riga, by the level of education, the higher educated people rated above the Latvian average.

## How has China's importance in the world changed over the last 5 years? average value

-100- deteriorated a lot +100- improved a lot

distribution of answers %



Source: GKI - China-CEE Institute Nonprofit Ltd. survey

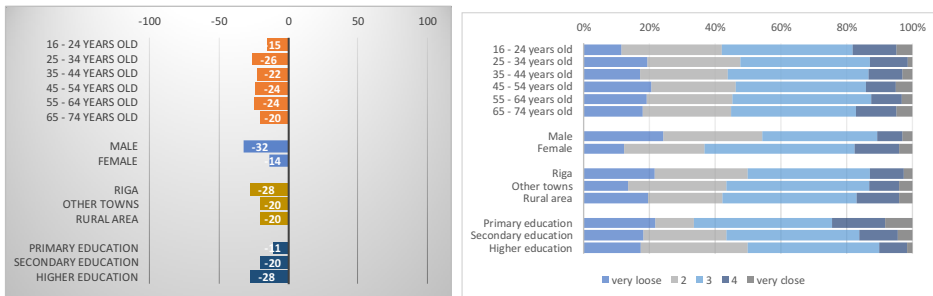
Inhabitants of Latvia evaluate the relationship between China and Latvia - on the scale of -100 and +100 - loose (-23, no change over 2017). This value is under the CEE 16 average (+3), and it means the 15<sup>th</sup> place in rankings of the CEE 16 countries. By age groups, those between the 25-34, 45-54 and 55-64 years, by sex, the men, by township, the people who live in Riga, by the level of education, the higher educated people rated under the Latvian average.

## How strong do you think the relationship between China and your country? average value

average value

-100-very loose; +100-very close

distribution of answers %

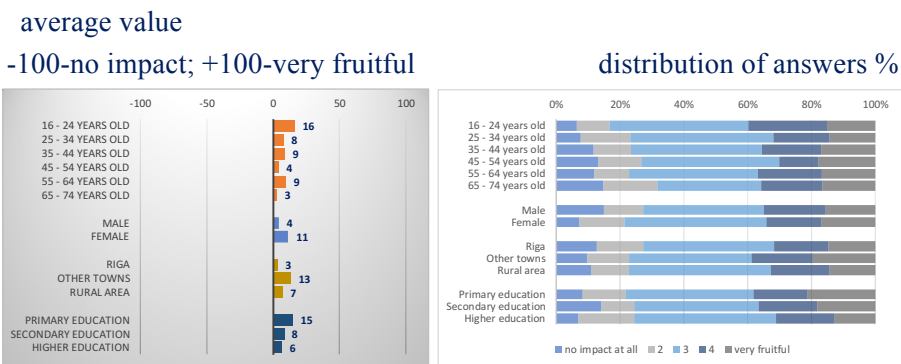


Source: GKI - China-CEE Institute Nonprofit Ltd. survey

Latvians consider the possible impact of the new Silk Road Initiative - which aims to strengthen trade and economic relations between China and

Latvia - in the next 5 years slightly positive (+8 vs. +7 in 2017). On the other hand, this value is under the CEE 16 average (+16) and means the 12<sup>th</sup> place in rankings of the CEE 16 countries. By age groups, the 16-24 (the most), the 35-44 and the 55-64 years old, by sex, the women, by township, the people who live in other towns, by the level of education, the primary educated people rated above the Latvian average.

**How do you consider the possible impact of the new Silk Road Initiative in the next 5 years, which aims to strengthen trade and economic relations between China and your country?**

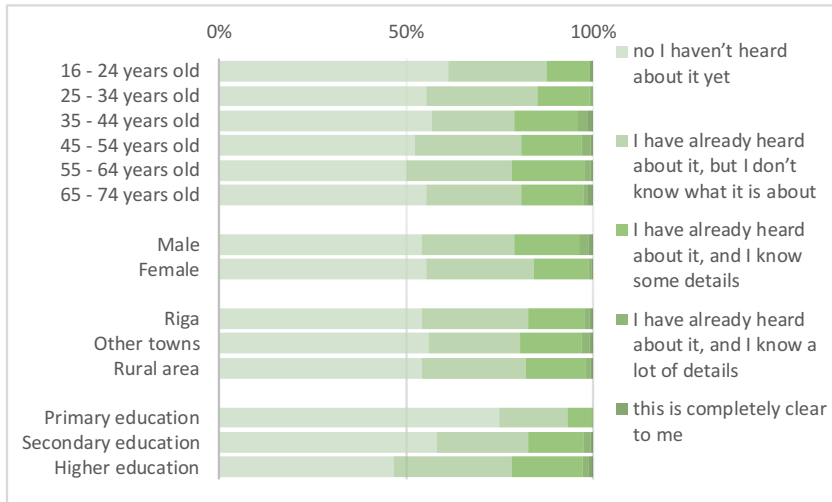


Source: GKI - China-CEE Institute Nonprofit Ltd. survey

55% of the Latvians hasn't heard about the cooperation between China and the Central and Eastern European countries (16+1), in which Latvia participates. Out of the remaining 45% (furthermore it is considered as 100%), 59% has already heard about it, but doesn't know what it is about, while 35% knows some, 4% a lot of details, and 2% indicated that it is completely clear to him/her.

**Have you ever heard about the cooperation between China and the Central and Eastern European countries (16+1), in which your country participates?**

(distribution of answers %)

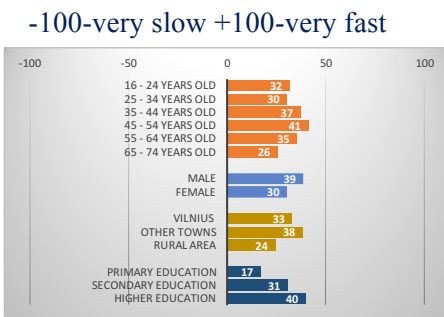


Source: GKI - China-CEE Institute Nonprofit Ltd. survey

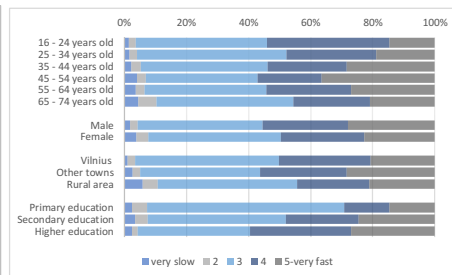
## Lithuania

Inhabitants of Lithuania evaluate China's economic development - on the scale of -100 and +100 - in the last 2 years fast (+34), the same as fast as in 2017, but slower than the CEE 16 average (+43), which means the 13<sup>th</sup> place in rankings of the CEE 16 countries. By age groups, the representatives of the 35-44, the 45-54 and the 55-64 years old, by sex, the men, by township, the people who live in other towns, by the level of education, the higher educated people rated above the Lithuanian average.

### How do you evaluate China's economic development in the last 2 years? average value



### distribution of answers %



Source: GKI - China-CEE Institute Nonprofit Ltd. survey

By the opinion of the Lithuanian people China's importance in the world improved over the last 5 years (+36 vs. +37 in 2017), which is under the CEE 16 average (+45), and which is the 12<sup>th</sup> place in rankings of the CEE 16 countries. By age groups, the representatives of the 45-54 and the 55-64 years old, by sex, the men, by township, the people who live in Vilnius and other towns, by the level of education, the higher educated people rated above the Lithuanian average.

## How has China's importance in the world changed over the last 5 years? average value

-100- deteriorated a lot +100- improved a lot      distribution of answers %



Source: GKI - China-CEE Institute Nonprofit Ltd. survey

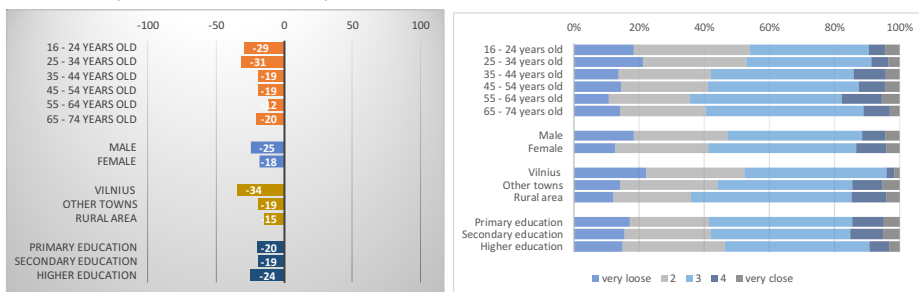
Inhabitants of Lithuania evaluate the relationship between China and Lithuania - on the scale of -100 and +100 - loose (-21), which is better than in 2017 (-26). This value is under the CEE 16 average (+3), and it means the 14<sup>th</sup> place in rankings of the CEE 16 countries. By age groups, the most the 16-24 and the 25-34 years old, by sex, the men, by township, the people who live in Vilnius, by the level of education, the higher educated people rated under the Lithuanian average.

## How strong do you think the relationship between China and your country? average value

average value

-100-very loose; +100-very close

distribution of answers %



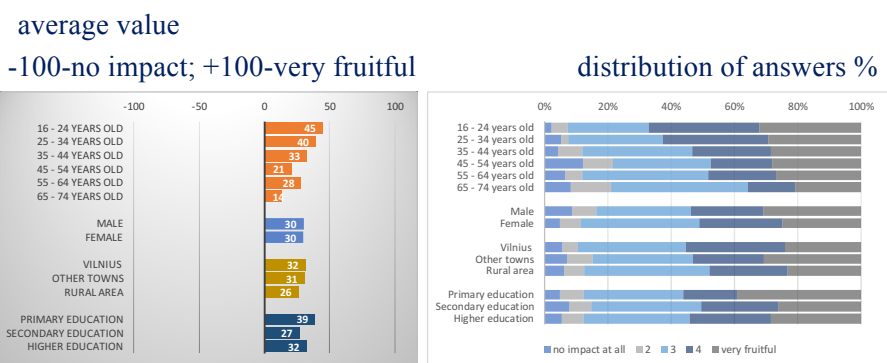
Source: GKI - China-CEE Institute Nonprofit Ltd. survey

Lithuanians consider the possible impact of the new Silk Road Initiative - which aims to strengthen trade and economic relations between China and Lithuania - in the next 5 years very positive (+30), which means no change



over 2017. On the other hand, this value is above the CEE 16 average (+16) and means the 3<sup>rd</sup> place in rankings of the CEE 16 countries. By age groups, the 16-24, the 25-34 and the 35-44 years old, by township the people who live in Vilnius and in other towns, by the level of education, the primary and higher educated people rated above the Lithuanian average.

**How do you consider the possible impact of the new Silk Road Initiative in the next 5 years, which aims to strengthen trade and economic relations between China and your country?**

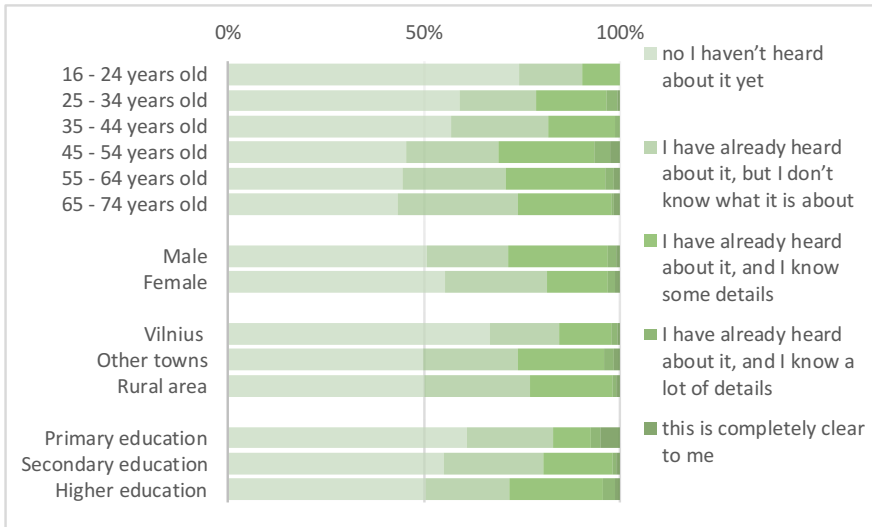


Source: GKI - China-CEE Institute Nonprofit Ltd. survey

53% of the Lithuanians hasn't heard about the cooperation between China and the Central and Eastern European countries (16+1), in which Lithuania participates. Out of the remaining 47% (furthermore it is considered as 100%), 50% has already heard about it, but doesn't know what it is about, while 43% knows some, 4% a lot of details, and only 2% indicated that it is completely clear to him/her.

**Have you ever heard about the cooperation between China and the Central and Eastern European countries (16+1), in which your country participates?**

(distribution of answers %)



Source: GKI - China-CEE Institute Nonprofit Ltd. survey

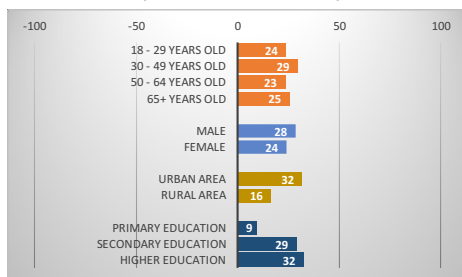
## Macedonia

Inhabitants of Macedonia evaluate China's economic development - on the scale of -100 and +100 - in the last 2 years fast (+26), but a bit slower than in 2017 (+27), but slower than the CEE 16 average (+43), which means the 15<sup>th</sup> place in rankings of the CEE 16 countries. By age groups, the representatives of the 30-49 years old, by sex, the men, by township, the people who live in urban area, by the level of education, the secondary and the higher educated people rated above the Macedonian average.

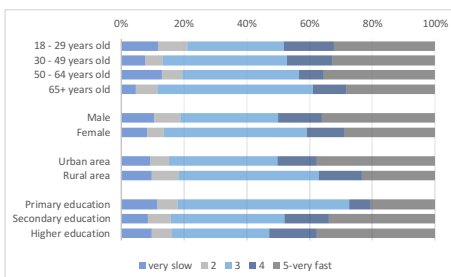
### How do you evaluate China's economic development in the last 2 years?

average value

-100-very slow +100-very fast



distribution of answers %



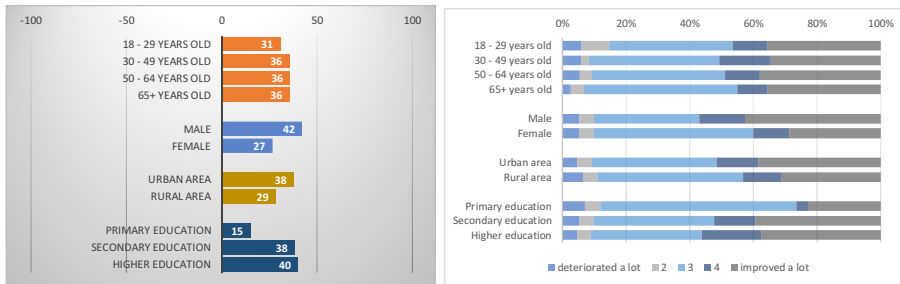
Source: GKI - China-CEE Institute Nonprofit Ltd. survey

By the opinion of the Macedonian people China's importance in the world improved over the last 5 years (+34 vs. +35 in 2017), which is under the CEE 16 average (+45), and which is the 13<sup>th</sup> place in rankings of the CEE 16 countries. By age groups, the representatives of the 30-49, 50-64 and the 65+ years old, by sex, the men, by township, the people who live in urban area, by the level of education, the secondary and the higher educated people rated above the Macedonian average.

## How has China's importance in the world changed over the last 5 years? average value

-100- deteriorated a lot +100- improved a lot

distribution of answers %



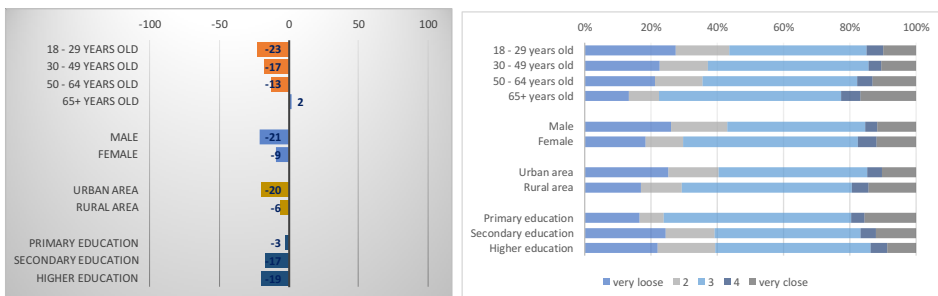
Source: GKI - China-CEE Institute Nonprofit Ltd. survey

Inhabitants of Macedonia evaluate the relationship between China and Macedonia - on the scale of -100 and +100 – rather loose (-15 vs. -16 in 2017). This value is under the CEE 16 average (+3), and it means the 13<sup>th</sup> place in rankings of the CEE 16 countries. By age groups, the representatives of the 18-29 and the 30-49 years old, by sex, the men, by township, the people who live in urban area, by the level of education, the secondary and the higher educated people rated under the Macedonian average.

## How strong do you think the relationship between China and your country? average value

-100-very loose; +100-very close

distribution of answers %



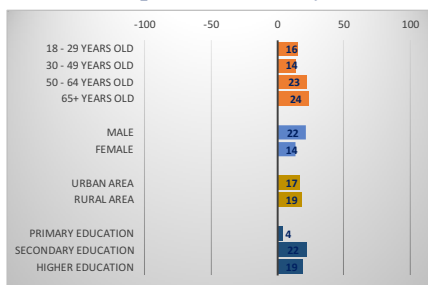
Source: GKI - China-CEE Institute Nonprofit Ltd. survey

Macedonian consider the possible impact of the new Silk Road Initiative - which aims to strengthen trade and economic relations between China and Macedonia - in the next 5 years positive (+18), but a bit less than in 2017 (+21). On the other hand, this value is above the CEE 16 average (+16) and means the 6<sup>th</sup> place in rankings of the CEE 16 countries. By age groups, the representatives of the 50-64 and the 65+ years, by sex, the men, by township, the people who live in rural area, by the level of education, the secondary and higher educated people rated above the Macedonian average.

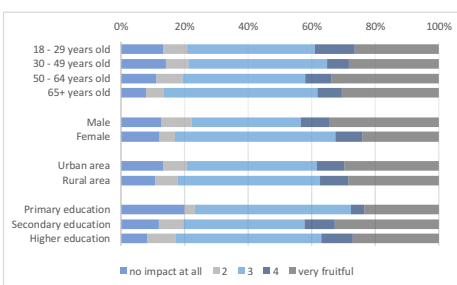
**How do you consider the possible impact of the new Silk Road Initiative in the next 5 years, which aims to strengthen trade and economic relations between China and your country?**

average value

-100-no impact; +100-very fruitful



distribution of answers %

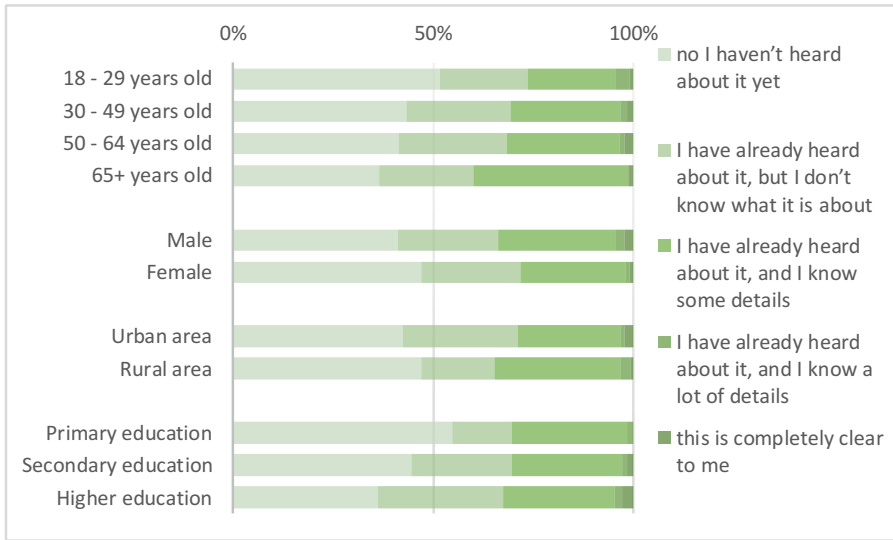


Source: GKI - China-CEE Institute Nonprofit Ltd. survey

44% of the Macedonian people hasn't heard about the cooperation between China and the Central and Eastern European countries (16+1), in which Montenegro participates. Out of the remaining 56% (furthermore it is considered as 100%), 45% has already heard about it, but doesn't know what it is about, while 50% knows some, 4% a lot of details, and only 2% indicated that it is completely clear to him/her.

**Have you ever heard about the cooperation between China and the Central and Eastern European countries (16+1), in which your country participates?**

(distribution of answers %)



Source: GKI - China-CEE Institute Nonprofit Ltd. survey

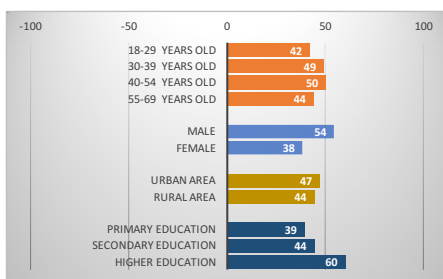
## Montenegro

Inhabitants of Montenegro evaluate China's economic development - on the scale of -100 and +100 - in the last 2 years fast (+46), faster than in 2017 (+40), and faster than the CEE 16 average (+43), which means the 5<sup>th</sup> place in rankings of the CEE 16 countries. By age groups, the representatives of the 30-39 and 40-54 years old, by sex, the men, by township, the people who live in urban area, by the level of education, the higher educated people rated above the Montenegrin average.

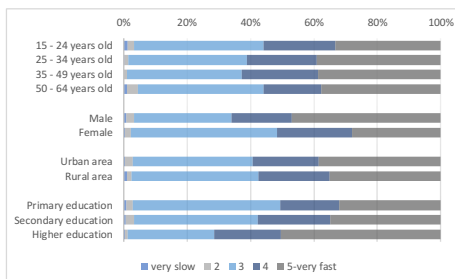
### How do you evaluate China's economic development in the last 2 years?

average value

-100-very slow +100-very fast



distribution of answers %

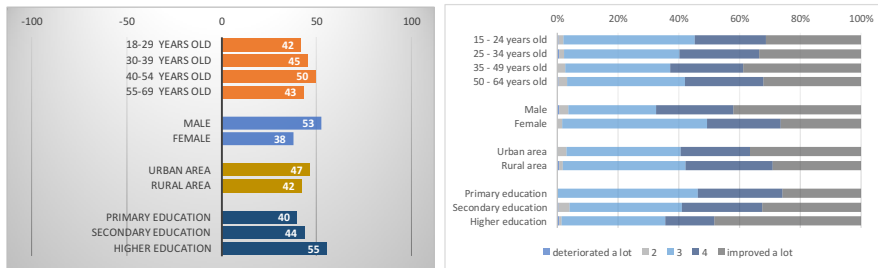


Source: GKI - China-CEE Institute Nonprofit Ltd. survey

By the opinion of the Montenegrin people China's importance in the world improved over the last 5 years (+45 vs. +42 in 2017), which equals the CEE 16 average (+45), and which is the 6<sup>th</sup> place in rankings of the CEE 16 countries. By age groups, the representatives of the 40-54 years old, by sex, the men, by township, the people who live in urban area, by the level of education, the higher educated people rated above the Montenegrin average.

## How has China's importance in the world changed over the last 5 years? average value

-100- deteriorated a lot +100- improved a lot      distribution of answers %



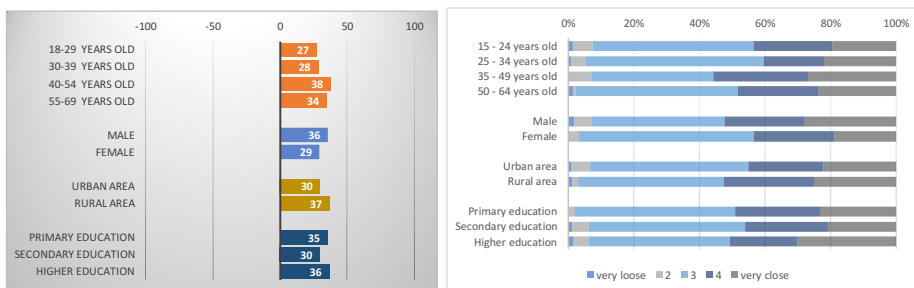
Source: GKI - China-CEE Institute Nonprofit Ltd. survey

Inhabitants of Montenegro evaluate the relationship between China and Montenegro - on the scale of -100 and +100 - close (+32), closer than in 2017 (+28). This value is above the CEE 16 average (+3), and it means the 2<sup>nd</sup> place in rankings of the CEE 16 countries. By age groups, the representatives of the 40-54 and 55-69 years old, by sex, the men, by township, the people who live in rural area, by the level of education, the primary and higher educated people rated above the Montenegrin average.

## How strong do you think the relationship between China and your country? average value

-100-very loose; +100-very close

distribution of answers %



Source: GKI - China-CEE Institute Nonprofit Ltd. survey

Montenegrin consider the possible impact of the new Silk Road Initiative - which aims to strengthen trade and economic relations between China and Montenegro - in the next 5 years positive (+15), which means no change

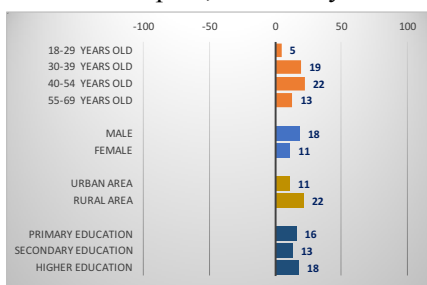


over 2017. On the other hand, this value is just under the CEE 16 average (+16) and means the 8<sup>th</sup> place in rankings of the CEE 16 countries. By age groups, the representatives of the 30-39 and the 40-54 years old, by sex the men, by township, the people who live in rural area, by the level of education, the primary and the higher educated people rated above the Montenegrin average.

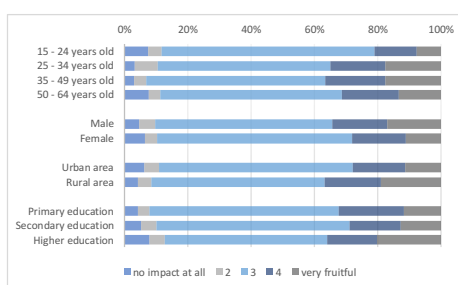
**How do you consider the possible impact of the new Silk Road Initiative in the next 5 years, which aims to strengthen trade and economic relations between China and your country?**

average value

-100-no impact; +100-very fruitful



distribution of answers %

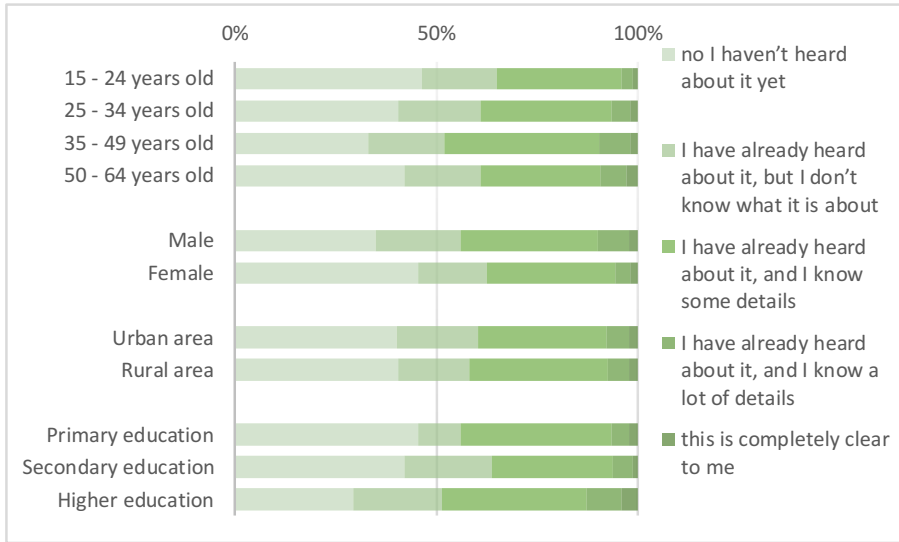


Source: GKI - China-CEE Institute Nonprofit Ltd. survey

40% of the Montenegrins hasn't heard about the cooperation between China and the Central and Eastern European countries (16+1), in which Montenegro participates. Out of the remaining 60% (furthermore it is considered as 100%), 32% has already heard about it, but doesn't know what it is about, while 55% knows some, 10% a lot of details, and only 3% indicated that it is completely clear to him/her.

**Have you ever heard about the cooperation between China and the Central and Eastern European countries (16+1), in which your country participates?**

( distribution of answers % )



Source: GKI - China-CEE Institute Nonprofit Ltd. survey

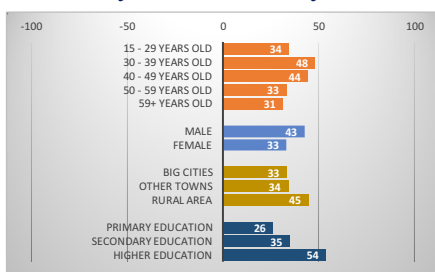
## Poland

Inhabitants of Poland evaluate China's economic development - on the scale of -100 and +100 - in the last 2 years fast (+38), the same as fast as last year, but slower than the CEE 16 average (+43), which means the 10<sup>th</sup> place in rankings of the CEE 16 countries. By age groups, the representatives of the 30-39 and the 40-49 years old, by sex, the men, by township, the people who live in rural area, by the level of education, the most the higher educated people rated above the Polish average.

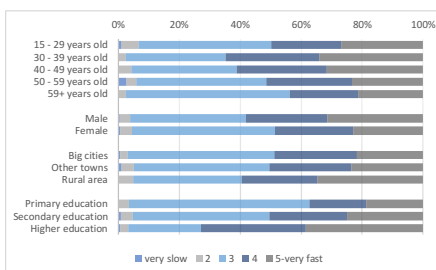
### How do you evaluate China's economic development in the last 2 years?

average value

-100-very slow +100-very fast



distribution of answers %



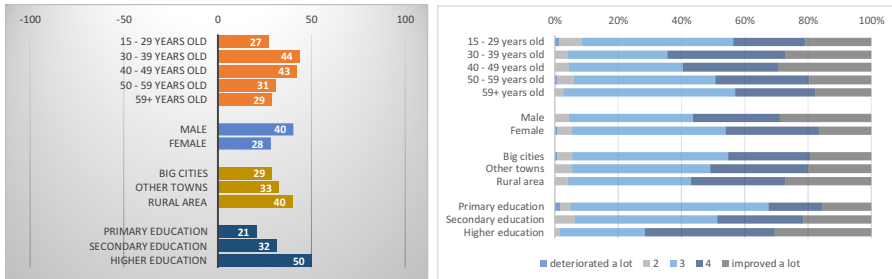
Source: GKI - China-CEE Institute Nonprofit Ltd. survey

By the opinion of the Polish people China's importance in the world improved over the last 5 years (+34, no change after 2017), which is under the CEE 16 average (+45), and which is the 14<sup>th</sup> place in rankings of the CEE 16 countries. By age groups, the most the representatives of the 30-39 and the 40-49 years old, by sex, the men, by township, the people who live in rural area, by the level of education, the higher educated people rated above the Polish average.

## How has China's importance in the world changed over the last 5 years? average value

-100- deteriorated a lot +100- improved a lot

distribution of answers %



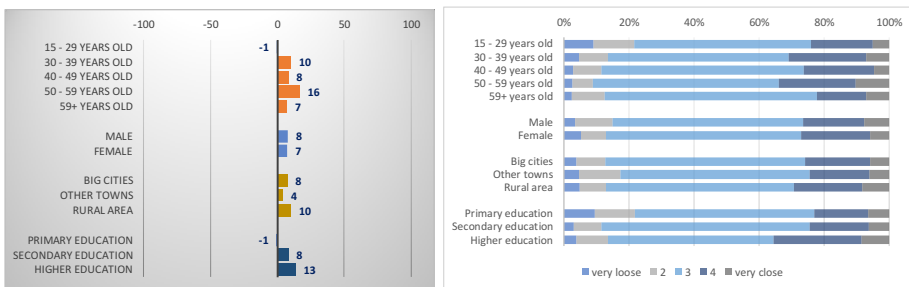
Source: GKI - China-CEE Institute Nonprofit Ltd. survey

Inhabitants of Poland evaluate the relationship between China and Poland - on the scale of -100 and +100 - close (+8 vs. +9 in 2017). This value is above the CEE 16 average (+3), and it means the 5<sup>th</sup> place in rankings of the CEE 16 countries. By age groups, the representatives of the 30-39 and the 50-59 years old, by township, the people who live in rural area, by the level of education, the higher educated people rated above the Polish average.

## How strong do you think the relationship between China and your country? average value

-100-very loose; +100-very close

distribution of answers %



Source: GKI - China-CEE Institute Nonprofit Ltd. survey

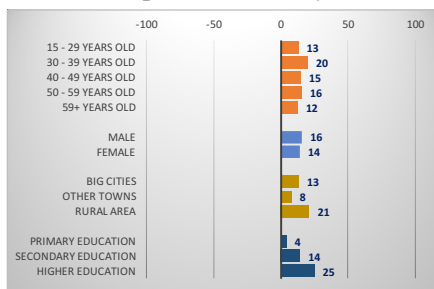
Poles consider the possible impact of the new Silk Road Initiative - which aims to strengthen trade and economic relations between China and Poland - in the next 5 years positive (+15), but not as positive as in 2017 (+18). On

the other hand, this value is just under the CEE 16 average (+16) and means the 7<sup>th</sup> place in rankings of the CEE 16 countries. By age groups, the representatives of the 30-39 and the 50-59 years old, by sex, the men, by township, the people who live in rural area, by the level of education, the higher educated people rated above the Polish average.

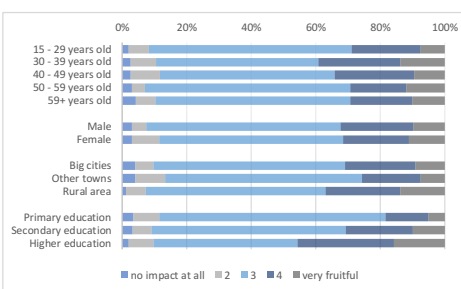
**How do you consider the possible impact of the new Silk Road Initiative in the next 5 years, which aims to strengthen trade and economic relations between China and your country?**

average value

-100-no impact; +100-very fruitful



distribution of answers %

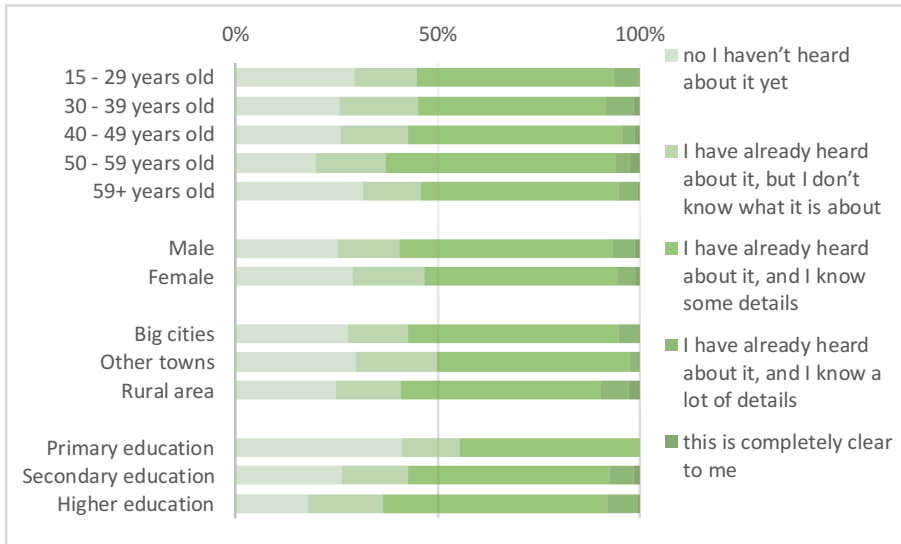


Source: GKI - China-CEE Institute Nonprofit Ltd. survey

27% of the Poles hasn't heard about the cooperation between China and the Central and Eastern European countries (16+1), in which Poland participates. Out of the remaining 73% (furthermore it is considered as 100%), 23% has already heard about it, but doesn't know what it is about, while 69% knows some, 7% a lot of details, and only 1% indicated that it is completely clear to him/her.

**Have you ever heard about the cooperation between China and the Central and Eastern European countries (16+1), in which your country participates?**

(distribution of answers %)



Source: GKI - China-CEE Institute Nonprofit Ltd. survey

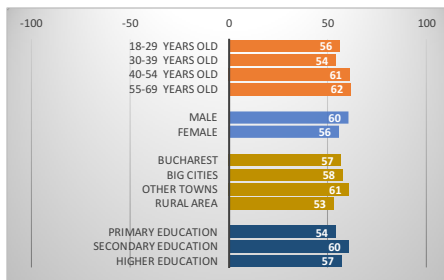
## Romania

Inhabitants of Romania evaluate China's economic development - on the scale of -100 and +100 - in the last 2 years fast (+58), the same fast as in 2017, and faster than the CEE 16 average (+43), which means the 4<sup>th</sup> place in rankings of the CEE 16 countries. By age groups, the representatives of the 40-54 and 55-69 years old, by sex, the men, by township, the people who live in other towns, by the level of education, the secondary educated people rated above the Romanian average.

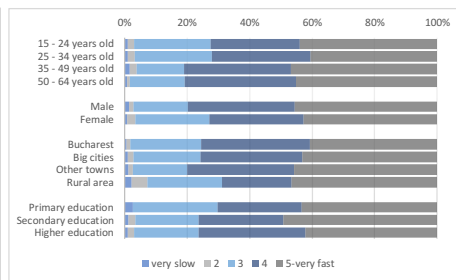
### How do you evaluate China's economic development in the last 2 years?

average value

-100-very slow +100-very fast



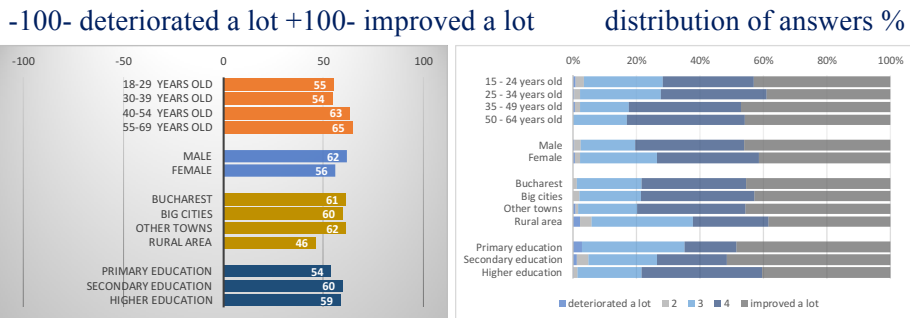
distribution of answers %



Source: GKI - China-CEE Institute Nonprofit Ltd. survey

By the opinion of the Romanian people, China's importance in the world improved over the last 5 years (+59 vs. +56 in 2017), which is above the CEE 16 average (+45), and which is the 4<sup>th</sup> place in rankings of the CEE 16 countries. By age groups, the representatives of the 40-54 and the 55-69 years old, by sex, the men, by township, the people who live in Bucharest, big cities and other towns, by the level of education, the secondary educated people rated above the Romanian average.

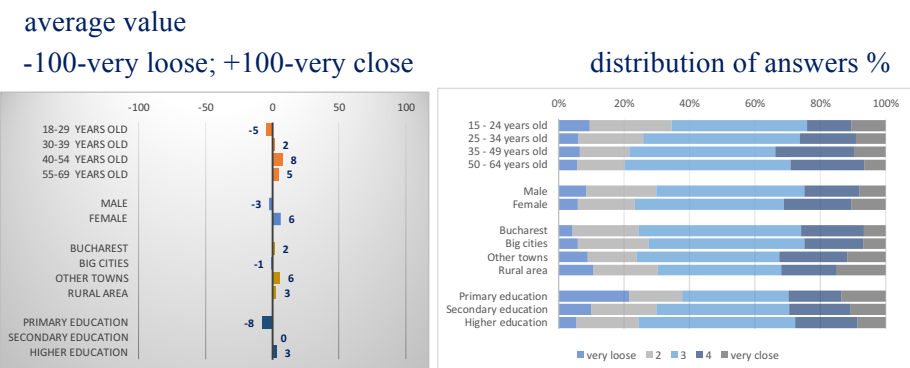
## How has China's importance in the world changed over the last 5 years? average value



Source: GKI - China-CEE Institute Nonprofit Ltd. survey

Inhabitants of Romania evaluate the relationship between China and Romania - on the scale of -100 and +100 - neutral (+2 vs. 0 in 2017). This value is just under the CEE 16 average (+3), and it means the 8<sup>th</sup> place in rankings of the CEE 16 countries. By age groups, the representatives of the 40-54 and the 55-69 years old, by sex, the women, by township, the people who live in other towns and in the rural area, by the level of education, the higher educated people rated above the Romanian average.

## How strong do you think the relationship between China and your country? average value



Source: GKI - China-CEE Institute Nonprofit Ltd. survey

Romanians consider the possible impact of the new Silk Road Initiative - which aims to strengthen trade and economic relations between China and Romania - in the next 5 years positive (+29), a bit more positive than in

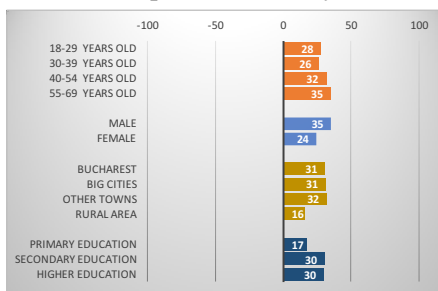


2017 (+26). On the other hand, this value is above the CEE 16 average (+16) and means the 4<sup>th</sup> place in rankings of the CEE 16 countries. By age groups, the representatives of the 40-54 and the 55-69 years old, by sex, the men, by township, the people who live in Bucharest, big cities and other towns, by the level of education, the secondary and higher educated people rated above the Romanian average.

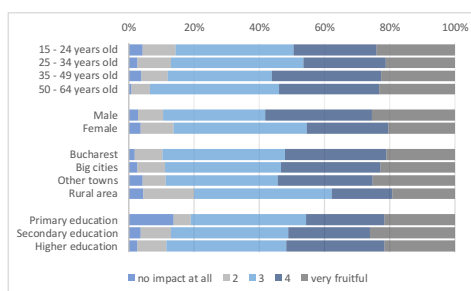
**How do you consider the possible impact of the new Silk Road Initiative in the next 5 years, which aims to strengthen trade and economic relations between China and your country?**

average value

-100=no impact; +100=very fruitful



distribution of answers %

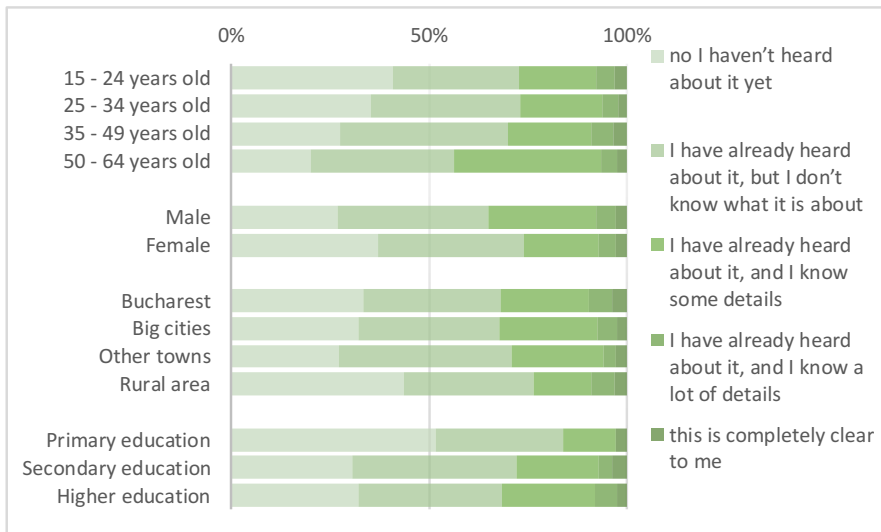


Source: GKI - China-CEE Institute Nonprofit Ltd. survey

32% of the Romanians hasn't heard about the cooperation between China and the Central and Eastern European countries (16+1), in which Romania participates. Out of the remaining 68% (furthermore it is considered as 100%), 54% has already heard about it, but doesn't know what it is about, while 34% knows some, 7% a lot of details, and only 4% indicated that it is completely clear to him/her.

**Have you ever heard about the cooperation between China and the Central and Eastern European countries (16+1), in which your country participates?**

(distribution of answers %)



Source: GKI - China-CEE Institute Nonprofit Ltd. survey

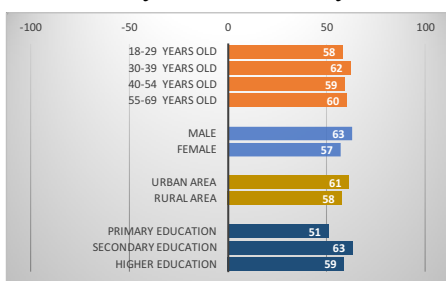
## Serbia

Inhabitants of Serbia evaluate China's economic development - on the scale of -100 and +100 - in the last 2 years fast (+60), faster than in 2017 (+57), and faster than the CEE 16 average (+43), which means the 3<sup>rd</sup> place in rankings of the CEE 16 countries. By age groups, the representatives of the 30-39 years old, by sex, the men, by township, the people who live in urban area, by the level of education, the secondary educated people rated above the Serbian average.

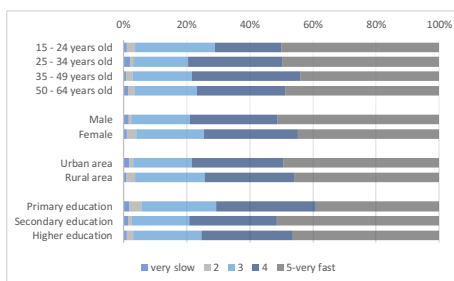
### How do you evaluate China's economic development in the last 2 years?

average value

-100-very slow +100-very fast



distribution of answers %

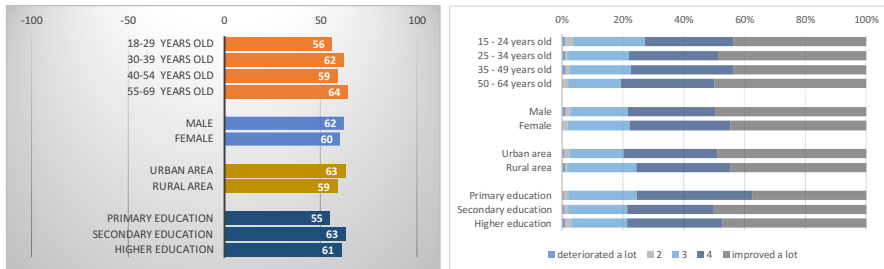


Source: GKI - China-CEE Institute Nonprofit Ltd. survey

By the opinion of the Serbian people China's importance in the world improved over the last 5 years (+61 vs. +59 in 2017), which is above the CEE 16 average (+45), and which is the 3<sup>rd</sup> place in rankings of the CEE 16 countries. By age groups, the representatives of the 30-39 and the 55-69 years old, by sex, the men, by township, the people who live in urban area, by the level of education, the secondary and the higher educated people rated above the Serbian average.

## How has China's importance in the world changed over the last 5 years? average value

-100- deteriorated a lot +100- improved a lot      distribution of answers %



Source: GKI - China-CEE Institute Nonprofit Ltd. survey

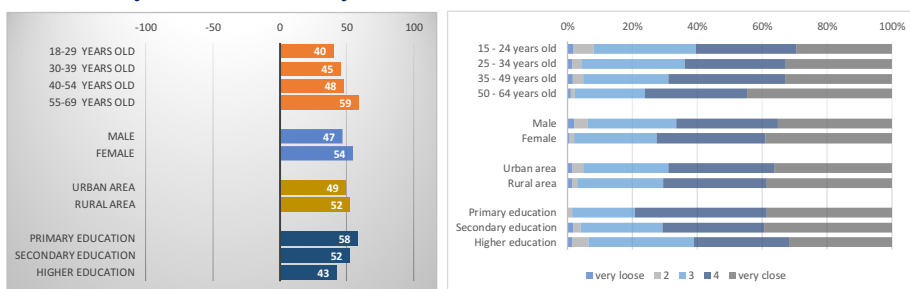
Inhabitants of Serbia evaluate the relationship between China and Serbia - on the scale of -100 and +100 - very close (+51 vs. +52 in 2017). This value is far above the CEE 16 average (+3), and it means the 1<sup>st</sup> place in rankings of the CEE 16 countries. By age groups, the representatives of the 55-69 years old, by sex, the women, by township, the people who live in rural area, by the level of education, the primary and the secondary educated people rated above the Serbian average.

## How strong do you think the relationship between China and your country? average value

average value

-100-very loose; +100-very close

distribution of answers %



Source: GKI - China-CEE Institute Nonprofit Ltd. survey

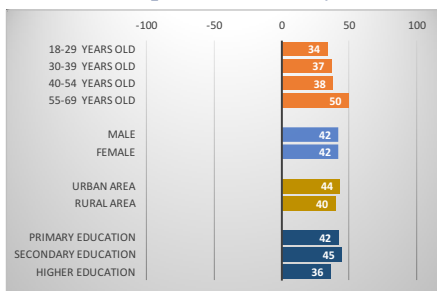
Serbian consider the possible impact of the new Silk Road Initiative - which aims to strengthen trade and economic relations between China and Serbia - in the next 5 years very positive (+42), much more positive than in

2017 (+31). On the other hand, this value is much above the CEE 16 average (+16) and means the 1<sup>st</sup> place in rankings of the CEE 16 countries. By age groups, the representatives of the 55-69 years old, by township, the people who live in urban area, by the level of education, the secondary educated people rated above the Serbian average.

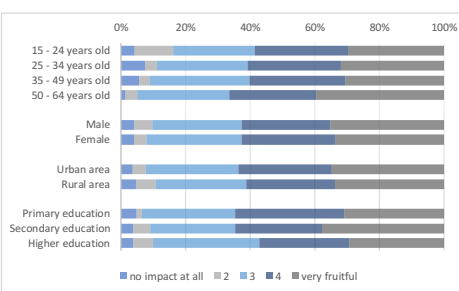
**How do you consider the possible impact of the new Silk Road Initiative in the next 5 years, which aims to strengthen trade and economic relations between China and your country?**

average value

-100-no impact; +100-very fruitful



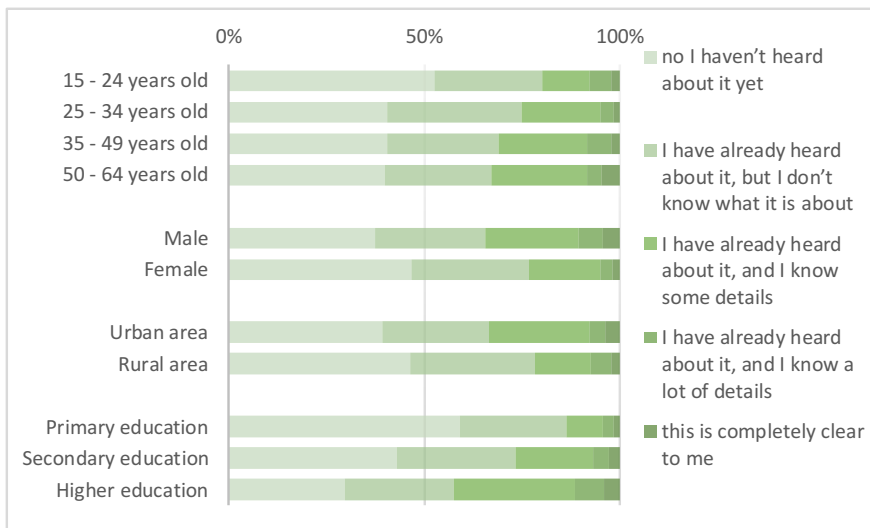
distribution of answers %



Source: GKI - China-CEE Institute Nonprofit Ltd. survey

42% of the Serbians hasn't heard about the cooperation between China and the Central and Eastern European countries (16+1), in which Serbia participates. Out of the remaining 58% (furthermore it is considered as 100%), 50% has already heard about it, but doesn't know what it is about, while 36% knows some, 9% a lot of details, and 5% indicated that it is completely clear to him/her.

**Have you ever heard about the cooperation between China and the Central and Eastern European countries (16+1), in which your country participates?**  
**(distribution of answers %)**



Source: GKI - China-CEE Institute Nonprofit Ltd. survey

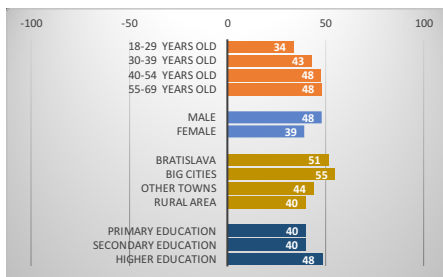
## Slovakia

Inhabitants of Slovakia evaluate China's economic development - on the scale of -100 and +100 - in the last 2 years fast (+44), faster than in 2017 (+42) and a bit faster than the CEE 16 average (+43), which means the 6<sup>th</sup> place in rankings of the CEE 16 countries. By age groups, the representatives of the 40-54 and the 55-69 years old, by sex the men, by township, the people who live in Bratislava and big cities, by the level of education, the higher educated people rated above the Slovakian average.

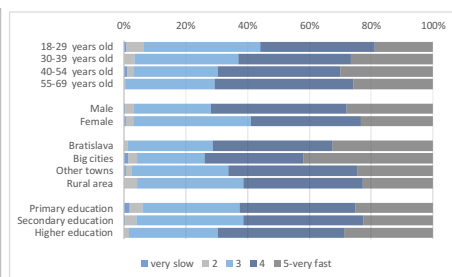
### How do you evaluate China's economic development in the last 2 years?

average value

-100-very slow +100-very fast



distribution of answers %



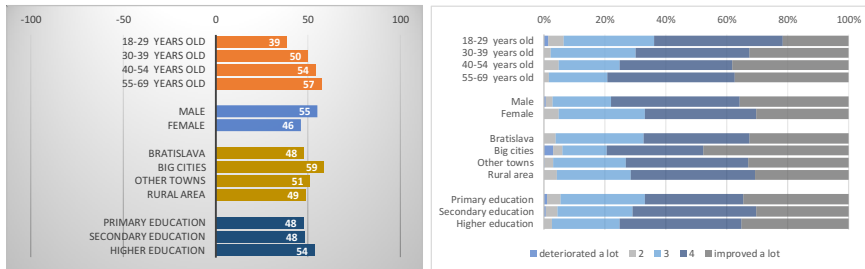
Source: GKI - China-CEE Institute Nonprofit Ltd. survey

By the opinion of the Slovakian people China's importance in the world improved over the last 5 years (+51 vs. +52 in 2017), which is above the CEE 16 average (+45), and which is the 5<sup>th</sup> place in rankings of the CEE 16 countries. By age groups, the representatives of the 40-54 and the 55-69 years old, by sex, the men, by township, the people who live in big cities, by the level of education, the higher educated people rated above the Slovakian average.

## How has China's importance in the world changed over the last 5 years? average value

-100- deteriorated a lot +100- improved a lot

distribution of answers %



Source: GKI - China-CEE Institute Nonprofit Ltd. survey

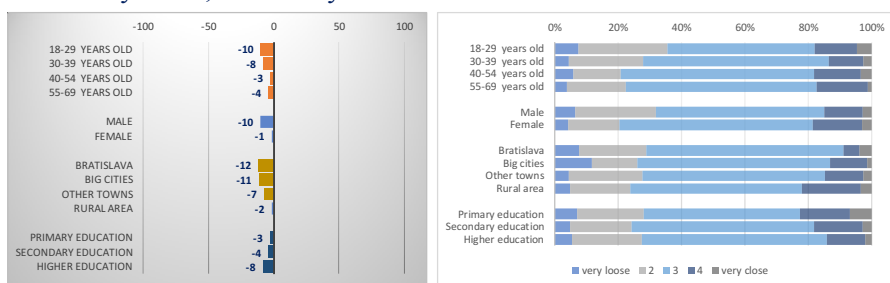
Inhabitants of Slovakia evaluate the relationship between China and Slovakia - on the scale of -100 and +100 - loose (-6 vs. -9 in 2017). This value is under the CEE 16 average (+3), and it means the 12<sup>th</sup> place in rankings of the CEE 16 countries. By age groups, the representatives of the 18-29 and the 30-39 years old, by sex the men, by township, the people who live in big cities, other towns and in Bratislava, by the level of education the higher educated people rated under the Slovakian average.

## How strong do you think the relationship between China and your country? average value

-100-very loose; +100-very close

-100-very loose; +100-very close

distribution of answers %



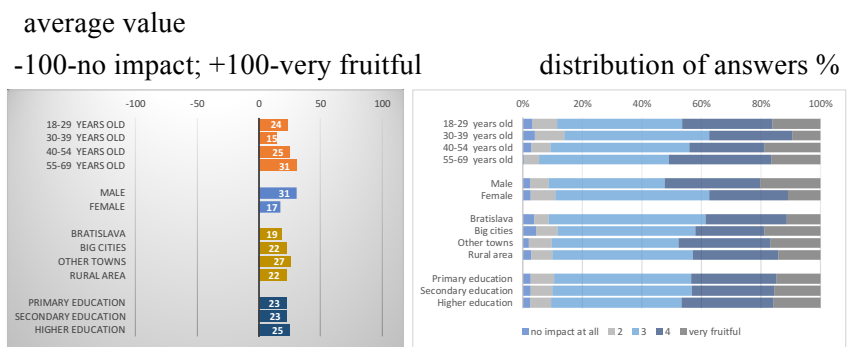
Source: GKI - China-CEE Institute Nonprofit Ltd. survey

Slovaks consider the possible impact of the new Silk Road Initiative - which aims to strengthen trade and economic relations between China and Slovakia - in the next 5 years positive (+24), more positive than in 2017



(+20). On the other hand, this value is above the CEE 16 average (+16) and means the 5<sup>th</sup> place in rankings of the CEE 16 countries. By age groups, the representatives of the 40-54 and the 55-69 years old, by sex, the men, by township, the people who live in other towns, by level of education, the higher educated people rated above the Slovakian average.

**How do you consider the possible impact of the new Silk Road Initiative in the next 5 years, which aims to strengthen trade and economic relations between China and your country?**

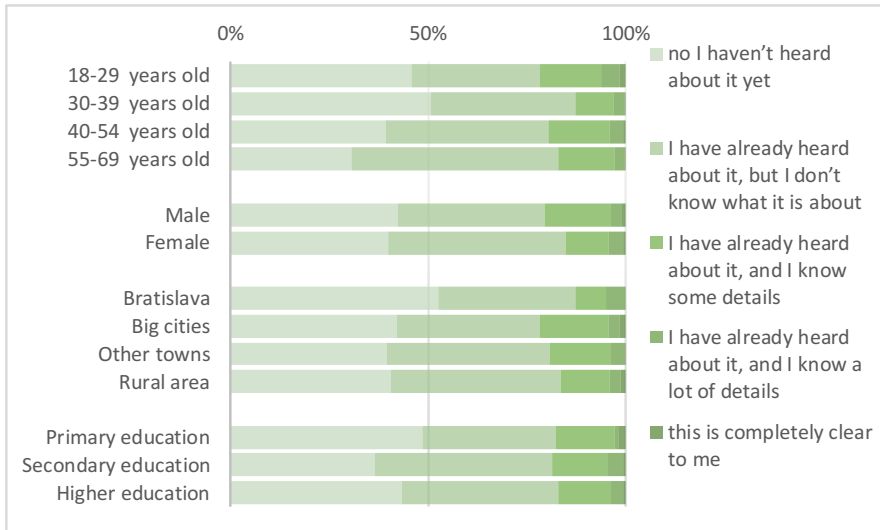


Source: GKI - China-CEE Institute Nonprofit Ltd. survey

41% of the Slovaks hasn't heard about the cooperation between China and the Central and Eastern European countries (16+1), in which Slovakia participates. Out of the remaining 59% (furthermore it is considered as 100%), 69% has already heard about it, but doesn't know what it is about, while 24% knows some, 5% a lot of details, and only 2% indicated that it is completely clear to him/her.

**Have you ever heard about the cooperation between China and the Central and Eastern European countries (16+1), in which your country participates?**

(distribution of answers %)



Source: GKI - China-CEE Institute Nonprofit Ltd. survey

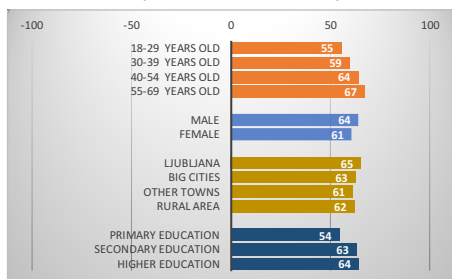
## Slovenia

Inhabitants of Slovenia evaluate China's economic development - on the scale of -100 and +100 - in the last 2 years very fast (+62), moreover it could improve somewhat compared to 2017 (+61). This is faster than the CEE 16 average (+43), which means the 2<sup>nd</sup> place in rankings of the CEE 16 countries. By age groups, the representatives of the 40-54 and the 55-69 years old, by sex the men, by township, the people who live in big cities and in Ljubljana, by the level of education, the secondary and higher educated people rated above the Slovenian average.

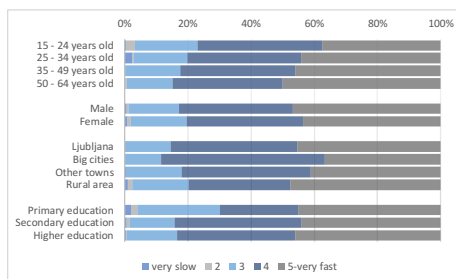
### How do you evaluate China's economic development in the last 2 years?

average value

-100-very slow +100-very fast



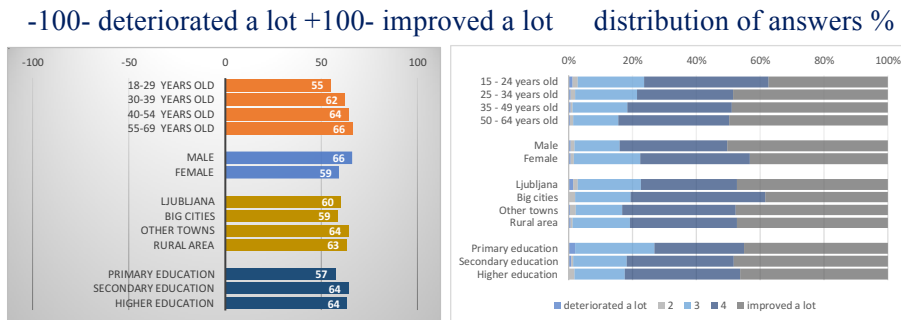
distribution of answers %



Source: GKI - China-CEE Institute Nonprofit Ltd. survey

By the opinion of the Slovenian people China's importance in the world improved over the last 5 years (+63, unchanged compared to 2017), which is above the CEE 16 average (+45), and which is the 2<sup>nd</sup> place in rankings of the CEE 16 countries. By age groups, the representatives of the 40-54 and the 55-69 years old, by sex, the men, by township, the people who live in other towns, by the level of education, the secondary and higher educated people rated above the Slovenian average.

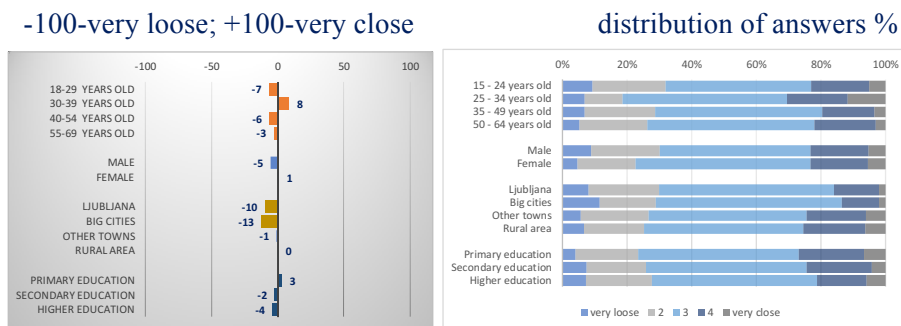
## How has China's importance in the world changed over the last 5 years? average value



Source: GKI - China-CEE Institute Nonprofit Ltd. survey

Inhabitants of Slovenia evaluate the relationship between China and Slovenia - on the scale of -100 and +100 - a bit loose (-2 vs. -5 in 2017). This value is under the CEE 16 average (+3), and it means the 11<sup>th</sup> place in rankings of the CEE 16 countries. By age groups, the representatives of the 18-29, the 40-54 and the 55-69 years old, by sex, the men, by township, the people who live in big cities and in Ljubljana, by level of education, the higher educated people rated below the Slovenian average.

## How strong do you think the relationship between China and your country? average value

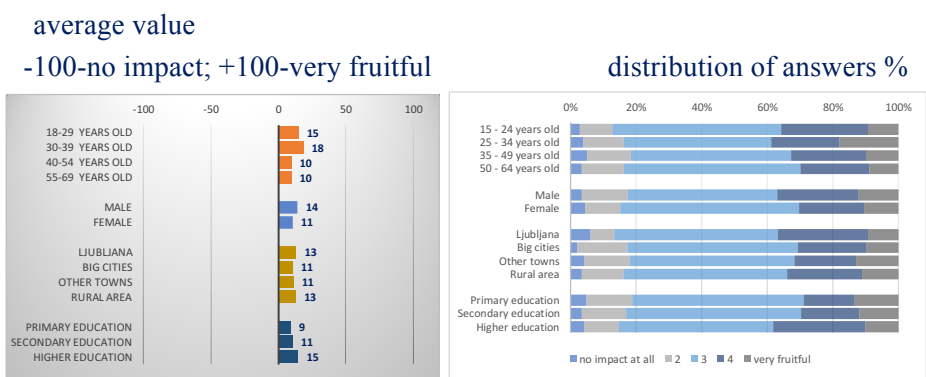


Source: GKI - China-CEE Institute Nonprofit Ltd. survey

Slovenians consider the possible impact of the new Silk Road Initiative - which aims to strengthen trade and economic relations between China and Slovenia - in the next 5 years positive (+12 vs. +13 in 2017). On the other

hand, this value is under the CEE 16 average (+16) and means the 9<sup>th</sup> place in rankings of the CEE 16 countries. By age groups, the representatives of the 18-29 and the 30-69 years old, by sex the men, by township, the people who live in Ljubljana and in the rural area, by education level the higher educated people rated above the Slovenian average.

**How do you consider the possible impact of the new Silk Road Initiative in the next 5 years, which aims to strengthen trade and economic relations between China and your country?**

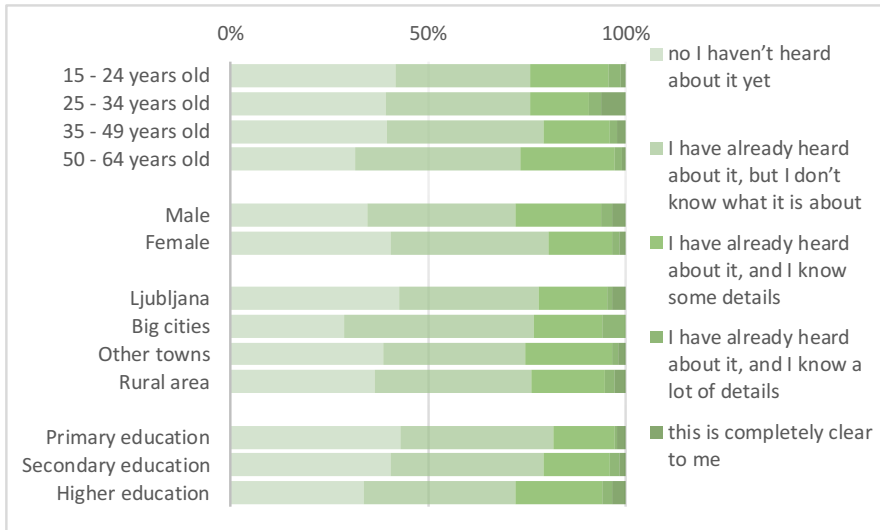


Source: GKI - China-CEE Institute Nonprofit Ltd. survey

37% of the Slovenians hasn't heard about the cooperation between China and the Central and Eastern European countries (16+1), in which Slovenia participates. Out of the remaining 63% (furthermore it is considered as 100%), 62% has already heard about it, but doesn't know what it is about, while 30% knows some, 4% a lot of details, and 5% indicated that it is completely clear to him/her.

**Have you ever heard about the cooperation between China and the Central and Eastern European countries (16+1), in which your country participates?**

(distribution of answers %)



Source: GKI - China-CEE Institute Nonprofit Ltd. survey

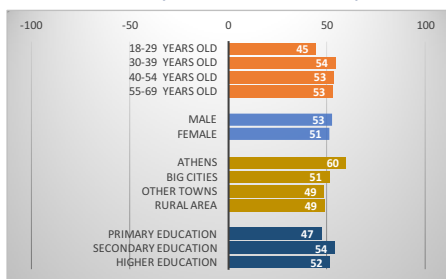
## Greece

Inhabitants of Greece evaluate China's economic development - on the scale of -100 and +100 - in the last 2 years very fast (+52), faster than the CEE 16 or the CEE 18 average (+43 and +44). By age groups, the representatives of the 30-39, the 40-54 and the 55-69 years old, by sex the men, by township, the people who live in Athens, by the level of education, the secondary educated people rated above the Greek average.

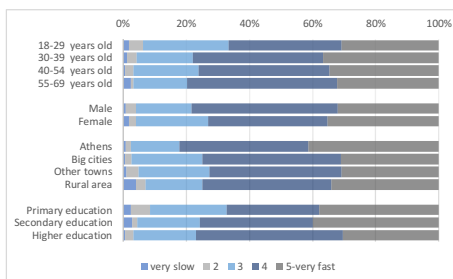
### How do you evaluate China's economic development in the last 2 years?

average value

-100-very slow +100-very fast



distribution of answers %



Source: GKI - China-CEE Institute Nonprofit Ltd. survey

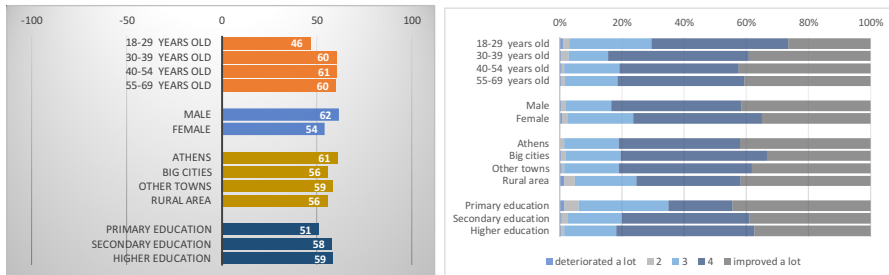
By the opinion of the Greek people China's importance in the world improved over the last 5 years (+58), which is above the CEE 16 or the CEE 18 average (+45 and +47). By age groups, the representatives of the 30-39, the 40-54 and the 55-69 years old, by sex the men, by township, the people who live in Athens and in other towns, by the level of education, the secondary and higher educated people rated above the Greek average.

## How has China's importance in the world changed over the last 5 years?

average value

-100- deteriorated a lot +100- improved a lot

distribution of answers %



Source: GKI - China-CEE Institute Nonprofit Ltd. survey

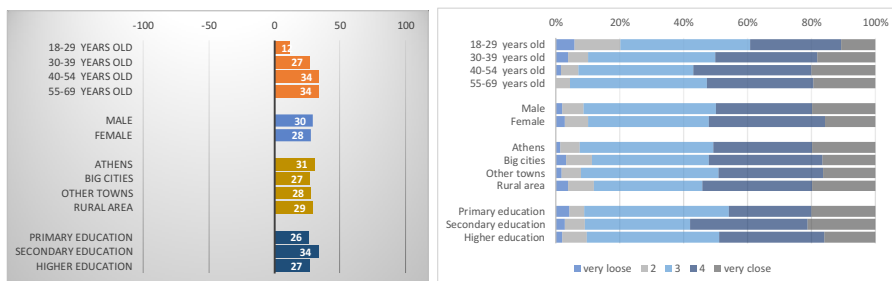
Inhabitants of Greece evaluate the relationship between China and Slovenia - on the scale of -100 and +100 - close (+29), which is above the CEE 16 and CEE 18 averages (+3 and +6). By age groups, the representatives of the 40-54 and the 55-69 years old, by sex the men, by township, the people who live in Athens, by the level of education, the secondary educated people rated above the Greek average.

## How strong do you think the relationship between China and your country?

average value

-100-very loose; +100-very close

distribution of answers %



Source: GKI - China-CEE Institute Nonprofit Ltd. survey

The Greek consider the possible impact of the new Silk Road Initiative in the next 5 years very positive (+41), which is above to the CEE 16 and CEE 18 average (+16 and +18). By age groups, the representatives of the 40-54 and 55-69 years old, by sex the men, by township, the people who live in

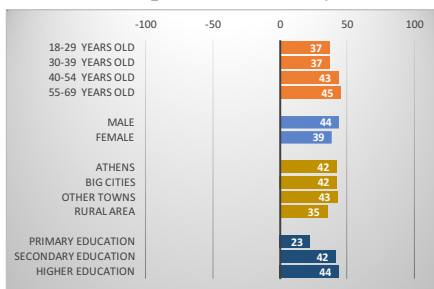


Athens and all other cities, by the level of education, the secondary and higher educated people rated above the Greek average.

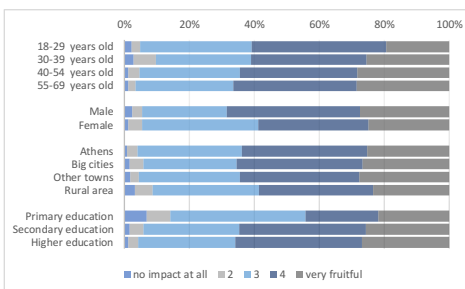
**How do you consider the possible impact of the new Silk Road Initiative in the next 5 years, which aims to strengthen trade and economic relations between China and your country?**

average value

-100-no impact; +100-very fruitful



distribution of answers %

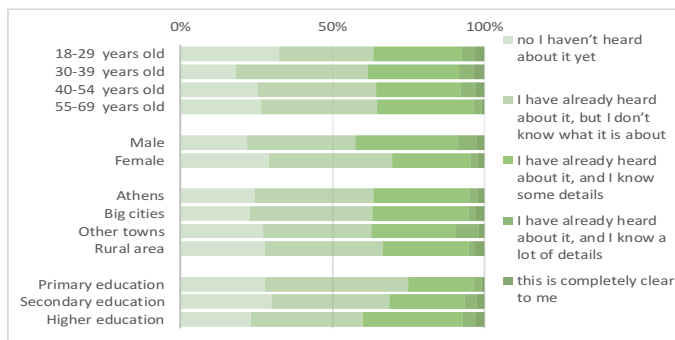


Source: GKI - China-CEE Institute Nonprofit Ltd. survey

25% of the Greek hasn't heard about the cooperation between China and the Central and Eastern European countries (16+1). Out of the remaining 75% (furthermore it is considered as 100%), 51% has already heard about it, but doesn't know what it is about, while 40% knows some, 5% a lot of details, and 4% indicated that it is completely clear to him/her.

**Have you ever heard about the cooperation between China and the Central and Eastern European countries (16+1)?**

distribution of answers %



Source: GKI - China-CEE Institute Nonprofit Ltd. survey

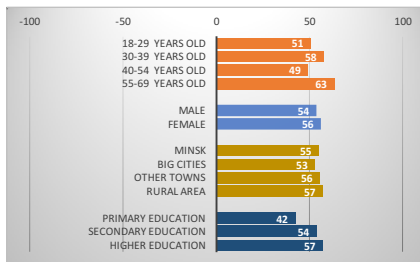
## Belorussia

Inhabitants of Belorussia evaluate China's economic development - on the scale of -100 and +100 - in the last 2 years very fast (+55), faster than the CEE 16 or the CEE 18 average (+43 and +44). By age groups, the representatives of the 30-39 and the 55-69 years old, by township, the people who live in the rural area and other towns, by the level of education, the higher educated people rated above the Belorussian average.

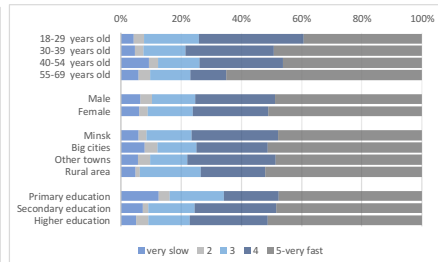
### How do you evaluate China's economic development in the last 2 years?

average value

-100-very slow +100-very fast



distribution of answers %



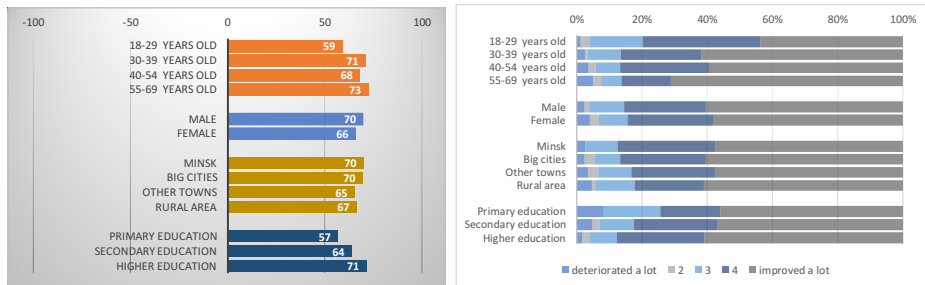
Source: GKI - China-CEE Institute Nonprofit Ltd. survey

By the opinion of the Belorussian people China's importance in the world improved over the last 5 years (+67), which is above the CEE 16 or the CEE 18 average (+45 and +47). By age groups, the representatives of the 30-39 and the 55-69 years old, by sex the men, by township, the people who live in Minsk and in big cities, by the level of education, the higher educated people rated above the Belorussian average.

## How has China's importance in the world changed over the last 5 years? average value

-100- deteriorated a lot +100- improved a lot

distribution of answers



Source: GKI - China-CEE Institute Nonprofit Ltd. survey

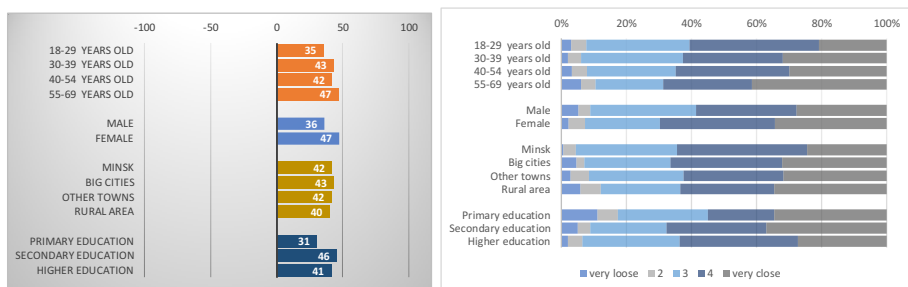
Inhabitants of Belorussia evaluate the relationship between China and Belorussia - on the scale of -100 and +100 – very close (+42), which is above the CEE 16 and CEE 18 averages (+3 and +6). By age groups, the representatives of the 30-39 and the 55-69 years old, by sex the women, by township, the people who live in big cities, by the level of education, the secondary educated people rated above the Belorussian average.

## How strong do you think the relationship between China and your country? average value

average value

-100-very loose; +100-very close

distribution of answers %

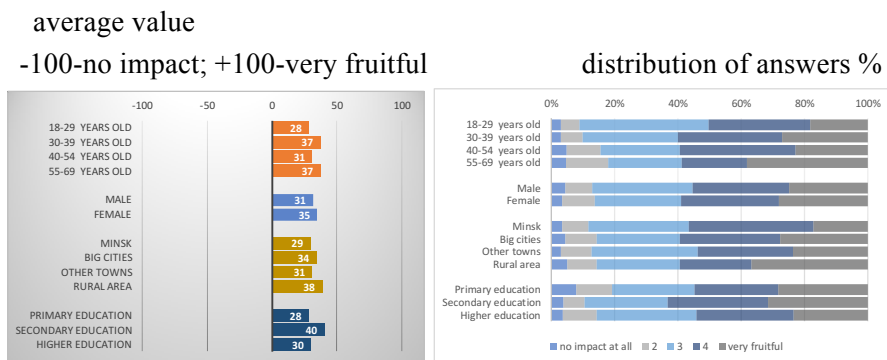


Source: GKI - China-CEE Institute Nonprofit Ltd. survey

Belorussian people consider the possible impact of the new Silk Road Initiative in the next 5 years positive (+32), which is above to the CEE 16 and CEE 18 average (+16 and +18). By age groups, the representatives of

the 30-39 and the 55-69 years old, by sex the women, by township, the people who live in big cities and in the rural area, by the level of education, the secondary educated people rated above the Belorussian average.

**How do you consider the possible impact of the new Silk Road Initiative in the next 5 years, which aims to strengthen trade and economic relations between China and your country?**

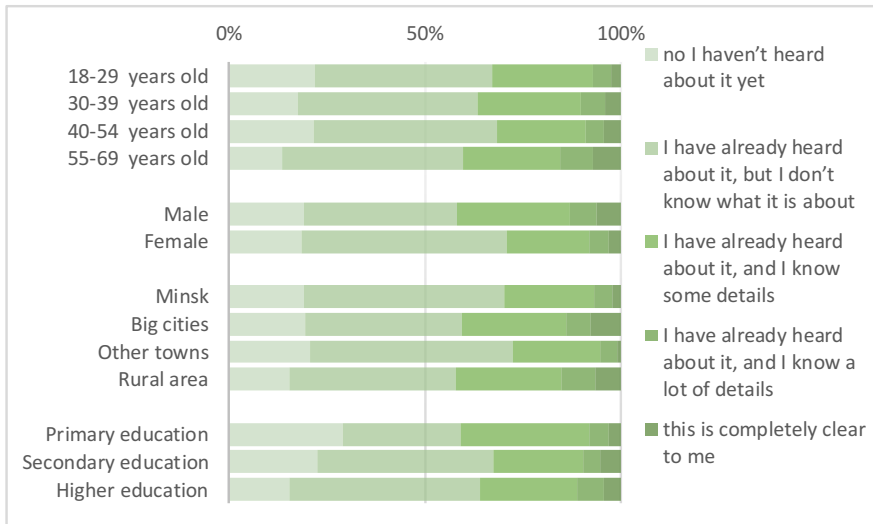


Source: GKI - China-CEE Institute Nonprofit Ltd. survey

20% of the Belorussian hasn't heard about the cooperation between China and the Central and Eastern European countries (16+1). Out of the remaining 80% (furthermore it is considered as 100%), 56% has already heard about it, but doesn't know what it is about, while 31% knows some, 7% a lot of details, and 6% indicated that it is completely clear to him/her.

## Have you ever heard about the cooperation between China and the Central and Eastern European countries (16+1)?

distribution of answers %



Source: GKI - China-CEE Institute Nonprofit Ltd. survey

## Appendix – Technical reports

### ESTONIA

#### Total population

Number of inhabitants aged 16-74

**Quotas used in the sampling frame:** GENDER, AGE, NATIONALITY, REGION, SETTLEMENT

	Number of respondents in the sample before weighting, %	Number of respondents in the sample after the weighting, %	Statistics, %
TOTAL			100.0
<b>GENDER*</b>			
Male	46.3	48.5	48.5
Female	53.7	51.5	51.5
<b>AGE*</b>			
16 - 24	8.1	11.9	11.9
25 - 34	18.9	19.8	19.8
35 - 49	32.5	28.1	28.1
50 - 64	27.7	26.6	26.6
65 - 74	12.9	13.6	13.6
<b>NATIONALITY*</b>			
Latvian	75.2	67.5	67.1
Other nationality	24.8	32.5	32.5
<b>REGION*</b>			
Tallinn	30.8	33.1	33.1
North-Estonia and West-Estonia	25.9	27.9	27.9
Tartu region and South-Estonia	25.4	23.9	23.9
Virumaa	17.8	15.1	15.1
<b>SETTLEMENT*</b>			
Tallinn	30.8	33.1	33.1

Big cities	14.3	16.7	16.7
Other cities	25.0	17.1	17.1
Rural area	29.8	33.1	33.1

		<b>FIELD WORK REPORT</b>	
Survey	<b>Cawibus including INHABITANT'S SURVEY ON KNOWLEDGE OF INFLUENCE OF CHINA ON W</b>		
Time:	16.08.2018-22.08.2018		
Method:	CAWI ( <i>Computer Assisted Web Interviews</i> )		
Place:	Estonia		
Sample:	Web sample from Kantar Emor's panel		
Number of interviews	a) planned		1000
	b) actual		<b>1153</b>
	<b>Contacts with potential respondent</b>		
1) full interviews			1153
2) interviews did not happen because of:			
	respondent's refusal		43
	interrupted interview - respondent's refusal to continue the interview		98
	respondent cannot be ecountered during the field work		3839
	does not correspond to the target group (age, does not live in the country)/ quota full		2
	reminders sent		989
	<b>Number of sendouts: 5224</b>		
	<b>Average length of interview (in minutes):</b>		<b>2,15</b>

## LATVIA

### Total population

Number of inhabitants aged 16-74: 1572765

**Quotas used in the sampling frame:** GENDER, AGE, NATIONALITY, REGION, SETTLEMENT

#### REACHED SAMPLE IN COMPARISON TO THE STATISTICS OF THE TOTAL POPULATION –LATVIA

	Number of respondents in the sample before weighting, %	Number of respondents in the sample after the weighting, %	Statistics, %
TOTAL			100.0
<b>GENDER*</b>			
Male	48.2	48.1	48.1
Female	51.8	51.9	51.9
<b>AGE*</b>			
16 - 24	10.4	11.2	11.2
25 - 34	20.7	20.3	20.3
35 - 44	19.1	18.6	18.6
45 - 54	18.9	18.7	18.7
55 - 64	18.1	18.4	18.4
65 - 74	12.7	12.9	12.9
<b>NATIONALITY*</b>			
Latvian	60.3	59.0	59.0
Russian	26.5	28.0	28.0
Other nationality	13.2	13.0	13.0
<b>REGION*</b>			
Riga	33.8	33.3	33.3
Pieriga	18.7	18.5	18.5
Vidzeme	9.7	9.7	9.7
Kurzeme	12.0	12.6	12.6
Zemgale	11.7	11.9	11.9
Latgale	14.1	14.1	14.1



SETTLEMENT\*

Capital city	33.8	33.3	33.3
Other cities	36.2	35.2	35.2
Rural area	30.0	31.5	31.5

Source: The data of the Office of Citizenship and Migration Affairs of Latvia (OCMA) on January 1. 2018.

	<b>FIELD WORK REPORT</b>		
Survey	<b>5166_INHABITANT'S SURVEY ON KNOWLEDGE OF INFLUENCE OF CHINA ON WORLD'S ECC</b>		
Time:	16.08.2018.-22.08.2018		
Method:	CATI (Computer Assisted Telephone Interviews)		
Place:	whole Latvia		
Sample:	Random sample		
Number of interviews	a) planned		1000
	b) actual		<b>1015</b>
	<b>Contacts with potential respondent</b>		<b>4403</b>
	1) full interviews		1003
	2) interviews did not happen because of:		<b>3400</b>
	respondent's refusal		1701
	interrupted interview - respondent's refusal to continue the interview		48
	agreement to postpone the interview, repeatedly postponed interview		631
	respondent cannot be encountered during the field work		107
	does not correspond to the target group (age, does not live in the country)/ quota full		908
	Is already surveyed in this project (fixed line or mobile)		5
	<b>Number of used numbers:</b>		
	Does not pick up		2590
	Automatic answering machine, fax or modem		1277
	Line is busy		321
	No addressee, closed line		14090
	Uncorrect telephone number, office		91
	Damaged line, bad connection		49
	<b>Average length of interview (in minutes):</b>		<b>4,86</b>
	<b>Number of interviewers</b>		<b>34</b>

## LITHUANIA

### Total population

Number of inhabitants aged 16-74: 2084802

**Quotas used in the sampling frame:** GENDER, AGE, NATIONALITY, REGION, SETTLEMENT

#### REACHED SAMPLE IN COMPARISON TO THE STATISTICS OF THE TOTAL POPULATION –LITHUANIA

	Number of respondents in the sample before weighting, %	Number of respondents in the sample after the weighting, %	Statistics, %
TOTAL	100	100	100,0
<b>GENDER*</b>			
Male	46,8	47,3	47,3
Female	53,2	52,7	52,7
<b>AGE*</b>			
16 - 24	13,7	13,6	13,6
25 - 34	17,4	17,8	17,8
35 - 44	16,9	16,5	16,5
45 - 54	20,0	19,6	19,6
55 - 64	18,6	19,3	19,3
65 - 74	13,4	13,2	13,2
<b>NATIONALITY*</b>			
Lithuanian	91,4	86,8	86,8
Russian	3,0	4,6	4,6
Other nationality	5,6	8,6	8,6
<b>REGION*</b>			
Vilnius	19,9	19,5	19,5
Kaunas	10,5	10,2	10,2
Klaipėda	4,8	5,2	5,2
Šiauliai	3,5	3,6	3,6
Panevėžys	3,0	3,2	3,2
Vilniaus district	9,3	9,3	9,3

Kauno district	9,5	9,8	9,8
Klaipėdos district	5,7	6,0	6,0
Šiaulių district	6,1	5,9	5,9
Panėvėžio district	4,2	4,6	4,6
Alytaus district	4,7	4,9	4,9
Marijampolės district	5,3	5,0	5,0
Tauragės district	3,6	3,4	3,4
Telšių district	5,1	4,8	4,8
Utenos district	4,8	4,6	4,6

#### SETTLEMENT\*

Capital city	19,9	19,6	19,6
Other cities	57,8	47,5	47,5
Rural area	22,3	32,9	32,9

**Source: Statistics Lithuania, Official Statistics Portal**

<b><u>FIELD WORK REPORT</u></b>		
Survey	<b>TNS LV: socio econ political issues 2018</b>	
Time:	2018.08.17 - 2018.09.03	
Method:	CATI	
Place:	whole Lithuania	
Sample:	Random sample	
Number of interviews	a) planned	1000
	b) actual	<b>1000</b>
		Number
<b>Contacts with potential respondent</b>		
1) full interviews		1000
2) interviews did not happen because of:		
	respondent's refusal	1680
	interrupted interview - respondent's refusal to continue the interview	143
	agreement to postpone the interview, repeatedly postponed interview	120
	respondent cannot be encountered during the field work	116
	quota full	24
	does not correspond to the target group (age, does not live in the country)	426
	is already surveyed in this project (fixed line or mobile)	2
<b>Number of used numbers:</b>		
	Does not pick up	4501
	Automatic answering machine, fax or modem	802
	Line is busy	322
	Office	
	No addressee, closed line	9174
	Damaged line, bad connection	1559
<b>Average length of interview (in minutes):</b>		<b>6,6</b>
<b>Number of interviewers</b>		<b>26</b>

## HUNGARY

### Total population

Number of inhabitants over the age of 18: 8142665

**Quotas used in the sampling frame:** GENDER, AGE, REGION, SETTLEMENT

#### REACHED SAMPLE IN COMPARISON TO THE STATISTICS OF THE TOTAL POPULATION –HUNGARY

	Number of respondents in the sample before weighting, %	Number of respondents in the sample after the weighting, %	Statistics, %
<b>TOTAL</b>			100.0
<b>GENDER*</b>			
Male	47.0	46.6	46.63
Female	53.0	53.4	53.37
<b>AGE*</b>			
18 – 29	18.6	18.1	18.12
30 – 39	19.4	19.4	19.42
40 – 49	15.6	16.2	16.16
50 – 59	17.8	17.7	17.67
60 – x	28.6	28.6	28.63
<b>REGION*</b>			
Central Hungary	29.7	30.1	30.03
Central Transdanubia	10.4	10.9	10.91
Western Transdanubia	10.9	10.0	10.03
Southern Transdanubia	10.2	9.4	9.44
Northern Hungary	11.4	11.8	11.85
Northern Great Plain	14.7	14.6	14.64

Southern Great Plain	12.7	13.1	13.10
----------------------	------	------	-------

#### SETTLEMENT\*

Capital city	18.0	18.1	18.12
County seat	19.5	17.9	17.89
Other cities	32.9	35.0	34.96
Municipality	29.6	29.0	29.03

*Source: The data of the Central Statistical Office (KSH) from the population census of 2011.*

## SLOVAKIA, CZECH REPUBLIC, ROMANIA, SLOVENIA, GREECE, BELARUS, BULGARIA

Method	Online survey (CAWI)				
Sample pool	Online access panel				
Sampling method	Quota-random				
Field date	From 4. To 20. September 2018.				
<b>Field statistics (n=)</b>					
	Started	Screen-out	Quota full	Timed-out	Completes
Slovakia	1670	7	640	22	1001
Czech Republic	2009	17	960	31	1001
Romania	1526	21	483	18	1004
Slovenia	1150	40	88	21	1001
Greece	1999	11	958	30	1000
Belarus	1150	3	92	54	1001
Bulgaria	1271	24	222	23	1002

<b>Quota and sample</b>					
<b>Quota</b>					
<b>Country*Gender*Age</b>					
Count		1 18-29	2 30-39	3 40-54	4 55-69
1 Slovakia	1 Male	114	117	146	121
	2 Female	109	111	144	138
2 Czech Republic	1 Male	101	112	156	133
	2 Female	98	106	149	145
3 Romania	1 Male	140	127	128	62
	2 Female	146	151	184	62
4 Slovenia	1 Male	95	109	163	144
	2 Female	89	99	155	146
5 Greece	1 Male	92	107	166	131
	2 Female	91	108	166	139
6 Belorussia	1 Male	118	110	142	108
	2 Female	113	110	155	144
7 Bulgaria	1 Male	95	104	161	139
	2 Female	89	97	155	160
<b>Country*Region</b>					
n=					
1 Slovakia	Valid	101 Bratislavsk	117		
		102 Západné S	344		
		103 Stredné Sk	248		
		104 Východné	291		
2 Czech Republic	Valid	201 Praha	121		
		202 Středočesl	124		
		203 Jihočceský	60		
		204 Plzeňský	55		
		205 Karlovarsk	29		
		206 Ústecký	79		
		207 Liberecký	42		
		208 Královéhra	52		
		209 Pardubický	49		
		210 Vysočina	48		
		211 Jihomorav	111		
		212 Olomoucký	60		
		213 Zlínský	55		
		214 Moravskos	115		
3 Romania	Valid	301 Nord-Vest	206		
		302 Centru (Alt	61		
		303 Nord-Est (I	118		
		304 Sud-Est (B	129		
		305 Sud - Munt	116		
		306 Bucure?ti -	194		
		307 Sud-Vest C	83		
		308 Vest (Arad	93		
4 Slovenia	Valid	401 Vzhodna S	531		
		402 Zahodna S	469		
5 Greece	Valid	501 North Aege	50		
		502 Attica	350		
		503 Crete	50		
		504 Epirus and	60		
		505 Eastern Mi	230		
		506 Peloponne	140		
		507 Thessaly a	120		
6 Belorussia	Valid	601 Brest Regi	150		
		602 Gornji Reç	150		
		603 Grodno Reç	110		
		604 Minsk City	190		
		605 Minsk Reg	150		
		606 Mogilev Rç	120		
		607 Vitebsk Re	130		
7 Bulgaria	Valid	701 North Cent	112		
		702 North-East	133		
		703 North-Wes	103		
		704 South Cen	201		
		705 South-Easi	145		
		706 South-Wes	306		

<b>Unweighted sample</b>					
<b>Country*Gender*Age</b>					
Count		1 18-29	2 30-39	3 40-54	4 55-69
1 Slovakia	1 Male	108	119	147	121
	2 Female	110	111	146	138
2 Czech Repub	1 Male	94	108	156	135
	2 Female	99	112	151	145
3 Romania	1 Male	139	129	129	62
	2 Female	148	150	181	62
4 Slovenia	1 Male	93	108	163	144
	2 Female	89	98	159	146
5 Greece	1 Male	99	115	165	124
	2 Female	105	128	159	105
6 Belorussia	1 Male	107	163	168	39
	2 Female	165	196	134	29
7 Bulgaria	1 Male	95	94	166	141
	2 Female	90	99	155	160
<b>Country*Region</b>					
n=					
1 Slovakia	Valid		101 Bratislavsk	116	
			102 Západné S	347	
			103 Stredné Sl	243	
			104 Východné	294	
2 Czech Repub	Valid		201 Praha	126	
			202 Středočesl	118	
			203 Jihočeský	62	
			204 Plzeňský	55	
			205 Karlovarsk	29	
			206 Ústecký	75	
			207 Liberecký	38	
			208 Královéhra	52	
			209 Pardubický	50	
			210 Vysočina	50	
			211 Jihomorav	112	
			212 Olomoucký	61	
			213 Zlínský	55	
			214 Moravskos	117	
3 Romania	Valid		301 Nord-Vest	208	
			302 Centru (Alt	62	
			303 Nord-Est (I	119	
			304 Sud-Est (B	128	
			305 Sud - Munt	116	
			306 Bucure?ti -	195	
			307 Sud-Vest C	79	
			308 Vest (Arad	93	
4 Slovenia	Valid		401 Vzhodna S	531	
			402 Zahodna S	469	
5 Greece	Valid		501 North Aege	28	
			502 Attica	400	
			503 Crete	56	
			504 Epirus and	56	
			505 Eastern M	264	
			506 Peloponne	98	
			507 Thessaly a	98	
6 Belorussia	Valid		601 Brest Regi	123	
			602 Gomel Re	126	
			603 Grodno Re	123	
			604 Minsk City	269	
			605 Minsk Reg	117	
			606 Mogilev R	104	
			607 Vitebsk Re	139	
7 Bulgaria	Valid		701 North Cent	112	
			702 North-East	135	
			703 North-Wes	108	
			704 South Cen	203	
			705 South-Eas	147	
			706 South-Wes	295	



<b>Weighted sample</b>					
<b>Country*Gender*Age</b>					
Count					
		1 18-29	2 30-39	3 40-54	4 55-69
1 Slovakia	1 Male	114	117	146	121
	2 Female	109	111	144	138
2 Czech Reput	1 Male	101	112	156	133
	2 Female	98	106	149	145
3 Romania	1 Male	140	127	128	62
	2 Female	146	151	184	62
4 Slovenia	1 Male	95	109	163	144
	2 Female	89	99	155	146
5 Greece	1 Male	92	107	166	131
	2 Female	91	108	166	139
6 Belorussia	1 Male	118	110	142	108
	2 Female	113	110	155	144
7 Bulgaria	1 Male	95	104	161	139
	2 Female	89	97	155	160
<b>Country*Region</b>					
n=					
1 Slovakia	Valid			101 Bratislavsk	117
				102 Západné S	344
				103 Stredné Sk	248
				104 Východné	291
2 Czech Reput	Valid			201 Praha	121
				202 Středočesl	124
				203 Jihočeský	60
				204 Plzeňský	55
				205 Karlovarsk	29
				206 Ústecký	79
				207 Liberecký	42
				208 Královéhra	52
				209 Pardubický	49
				210 Vysočina	48
				211 Jihomorav	111
				212 Olomoucký	60
				213 Zlínský	55
				214 Moravskos	115
3 Romania	Valid			301 Nord-Vest	206
				302 Centru (Alt	61
				303 Nord-Est (I	118
				304 Sud-Est (B	129
				305 Sud - Munt	116
				306 Bucure?ti -	194
				307 Sud-Vest C	83
				308 Vest (Arad	93
4 Slovenia	Valid			401 Vzhodna S	531
				402 Zahodna S	469
5 Greece	Valid			501 North Aege	50
				502 Attica	350
				503 Crete	50
				504 Epirus and	60
				505 Eastern Ma	230
				506 Peloponne	140
				507 Thessaly a	120
6 Belorussia	Valid			601 Brest Regi	150
				602 Gomel Reg	150
				603 Grodno Re	110
				604 Minsk City	190
				605 Minsk Reg	150
				606 Mogilev Re	120
				607 Vitebsk Re	130
7 Bulgaria	Valid			701 North Cent	112
				702 North-East	133
				703 North-Wes	103
				704 South Cen	201
				705 South-Eas	145
				706 South-Wes	306

Distribution of weight					
n=					
	weight<=0,25	0,25<weight<=0,5	0,5<weight<=2	2<weight<=4	4<weight
1 Slovakia	0	0	1000	0	0
2 Czech Republic	0	0	1000	0	0
3 Romania	0	0	1000	0	0
4 Slovenia	0	0	1000	0	0
5 Greece	0	0	988	12	0
6 Belorussia	0	95	838	36	32
7 Bulgaria	0	0	1000	0	0

## CROATIA

Total population

Number of inhabitants aged 16+: 3626496

Quotas used in the sampling frame: GENDER, AGE, REGION, SETTLEMENT

### REACHED SAMPLE IN COMPARISON TO THE STATISTICS OF THE TOTAL POPULATION

	Number of respondents in the sample before weighting, %	Number of respondents in the sample after the weighting, %	Statistics, %
<b>TOTAL</b>	100	100	100.0
<b>GENDER</b>			
Male	43.1	48.4	47,7
Female	56.9	51.6	52,3
<b>AGE</b>			
15 - 24	14,4	15,4	13,9
25 - 34	14,6	13,7	16,1
35 - 44	17,1	17,1	15,8
45 - 54	16,3	16,7	17,9
55 - 64	21,4	19,2	16,1
65 +	16,2	17,9	20,8
<b>REGION</b>			
Zagreb region	26,0	26,1	25,9
Northern Croatia	17,6	17,6	17,2
Slavonia	16,2	17,0	16,6
Lika and Banovina	8,4	8,5	8,3
Hrvatsko Primorje and Istra	12,0	10,7	12,1
Dalmatia	19,8	20,2	19,8
<b>SETTLEMENT</b>			
Urban	61.7	60.6	61,3
Rural	38.3	39.4	38,7

## MONTENEGRO

Total population

Number of inhabitants aged 18+: 474903

Quotas used in the sampling frame: GENDER, AGE, REGION, SETTLEMENT

### REACHED SAMPLE IN COMPARISON TO THE STATISTICS OF THE TOTAL POPULATION –MONTENEGRO

	Number of respondents in the sample before weighting, %	Number of respondents in the sample after the weighting, %	Statistics, %
TOTAL			100.0

#### GENDER\*

Male	44.4	48.6	48.6
Female	55.6	51.4	51.4

#### AGE\*

18 - 29	26.4	22.5	22.4
30 - 44	30.2	26.9	26.7
45 - 59	23.6	27.0	26.9
60+	19.8	23.6	24.0

#### REGION/STRATUM3\*

Sever	28.5	28.3	28.2
Centar	47.6	47.2	47.2
Jug	23.9	24.5	24.5

#### SETTLEMENT\*

Urban	64.4	64.5	64.4
Rural	35.6	35.5	35.6

Source: MONSTAT, Statistical office of Montenegro,  
<https://www.monstat.org/eng/index.php>

## MACEDONIA

Total population

Number of inhabitants aged 18+: 1,497,013

Quotas used in the sampling frame: GENDER, AGE, NATIONALITY, REGION, SETTLEMENT

### REACHED SAMPLE IN COMPARISON TO THE STATISTICS OF THE TOTAL POPULATION –MACEDONIA

	Number of respondents in the sample before weighting, %	Number of respondents in the sample after the weighting, %	Statistics, %
<b>TOTAL</b>			100.0
<b>GENDER*</b>			
Male	53.8	49.7	49.8
Female	46.2	50.3	50.2
<b>AGE*</b>			
18 – 29	19.4	25.5	25.5
30 – 49	40.2	39.3	39.3
50 – 64	27.1	20.9	20.9
65+	13.2	14.4	14.4
<b>NATIONALITY*</b>			
Macedonian	70.5	67.8	67.7
Albanian	24.2	22.2	22.2
Other nationality	5.3	10.1	10.1
<b>REGION*</b>			
Skopje	30.4	29.0	29.0
Northwest + Kumanovo	24.4	24.5	24.4
Southwest	21.4	21.1	21.1
East + Central	23.8	25.5	25.5
<b>SETTLEMENT*</b>			
Capital city	25.3	23.9	23.9
Other cities	43.8	39.3	39.3
Rural area	30.9	36.8	36.8

Source: State Statistical Office of Republic of Macedonia.

## POLAND

### Reached sample in comparison to the statistics of the total population –Poland

Total population

Number of inhabitants aged 15+: 32 660 000

Quotas used in the sampling frame: GENDER, AGE, EDUCATION, SETTLEMENT, REGION/Province

POLAND 2017/2018	Sample before weighting, %	Sample after the weighting, %	Statistics (CSO Poland), %
TOTAL	100,0%	100,0%	100,0%
GENDER			
male	47,7%	47,8%	47,8%
female	52,3%	52,2%	52,2%
AGE			
15 - 19	4,5%	5,9%	5,9%
20 - 24	8,5%	7,0%	7,0%
25 - 29	8,5%	8,5%	8,5%
30 - 39	19,1%	19,4%	19,4%
40 - 49	17,2%	15,9%	15,9%
50 - 59	14,5%	15,6%	15,6%
> 59	27,7%	27,7%	27,7%
EDUCATION			
primary	9,7%	18,8%	18,9%
vocational	27,3%	24,2%	24,2%
secondary	45,6%	33,7%	33,7%
university	17,5%	23,3%	23,2%
SETTLEMENT			
village	39,4%	39,2%	39,2%
town (< 20,000)	13,2%	13,1%	13,1%
town ( 20,000- 50,000)	14,3%	10,9%	10,9%
city ( 50,000-100,000)	4,9%	8,2%	8,2%
city (100,000-200,000)	7,4%	8,4%	8,4%
city (200,000-500,000)	9,4%	8,6%	8,6%
city (> 500,000)	11,3%	11,6%	11,6%
REGION /PROVINCE			
dolnoslaskie	7,9%	7,6%	7,7%

kujawsko-pomorskie	5,3%	5,4%	5,5%
lubelskie	5,4%	5,6%	5,6%
lubuskie	2,5%	2,6%	2,6%
lodzkie	6,4%	6,5%	6,5%
małopolskie	8,9%	8,7%	8,7%
mazowieckie	13,8%	13,8%	13,8%
opolskie	2,5%	2,6%	2,7%
podkarpackie	5,4%	5,5%	5,5%
podlaskie	3,0%	3,1%	3,1%
pomorskie	5,9%	5,9%	5,9%
ślaskie	12,3%	12,0%	12,0%
świętokrzyskie	3,5%	3,3%	3,3%
warmińsko-mazurskie	3,9%	3,7%	3,7%
wielkopolskie	8,9%	8,9%	8,9%
zachodniopomorskie	4,4%	4,5%	4,5%

## BOSNIA-HERZEGOVINA

Total population

Number of inhabitants aged 18+: 2.838.458

Quotas used in the sampling frame: GENDER, AGE, REGION, SETTLEMENT TYPE

### REACHED SAMPLE IN COMPARISON TO THE STATISTICS OF THE TOTAL POPULATION –BOSNIA AND HERZEGOVINA

	Number of respondents in the sample before weighting, %	Number of respondents in the sample after the weighting, %	Statistics, %
<b>TOTAL</b>			100.0
<b>GENDER*</b>			
Male	48.8	48.5	48.5
Female	51.2	51.5	51.5
<b>AGE*</b>			
18 - 24	12.1	12.5	11.3
25 - 34	19.7	19.1	17.8
35 - 44	16.6	15.4	17.3
45 - 54	18.4	18.2	18.9
55 - 64	17.7	17.1	16.9
65 +	15.5	17.6	17.8
<b>NATIONALITY*</b>			
Bosniacs	52.4	51.4	50.1
Croats	11.4	11.5	15.4
Serbs	32.7	33.5	30.7
Other nationality	3.5	3.6	3.6
<b>REGION*</b>			
Federation B&H	64.0	62.2	62.2
Republic Srpska	33.7	35.5	35.5
District Brcko	2.3	2.4	2.4
<b>SETTLEMENT*</b>			
Urban area	41.2	43.8	45.9
Rural area	58.8	56.2	54.1

Source: Census of Bosnia and Herzegovina (2013.)



## SERBIA

Total population

Number of inhabitants aged 18+: 5,801,993

Quotas used in the sampling frame: GENDER, AGE, REGION, SETTLEMENT

### REACHED SAMPLE IN COMPARISON TO THE STATISTICS OF THE TOTAL POPULATION –SERBIA

	Number of respondents in the sample before weighting, %	Number of respondents in the sample after the weighting, %	Statistics, %
TOTAL			100.0

#### GENDER\*

Male	47.2	48.2	48.1
Female	52.8	51.8	51.9

#### AGE\*

18 - 29	18.3	16.8	16.8
30 - 44	28.6	25.3	25.3
45 - 59	24.7	24.7	24.7
60+	28.4	33.2	33.2

#### REGION/STRATUM4\*

Beograd	22.3	23.9	24.0
Vojvodina	27.2	26.7	26.6
Ssumadija / Zapadna	29.0	27.6	27.6
Juzna / Istocna	21.5	21.8	21.8

#### SETTLEMENT\*

Urban	61.1	60.1	60.1
Rural	38.9	39.9	39.9

Source: RZS Republički zavod za statistiku, /Statistical office of Republic of Serbia,  
<http://www.stat.gov.rs/en-US/>

## ALBANIA

Total population

Number of inhabitants aged 18+: 2060324

Quotas used in the sampling frame: GENDER, AGE, REGION, SETTLEMENT

### REACHED SAMPLE IN COMPARISON TO THE STATISTICS OF THE TOTAL POPULATION –Albania

	Number of respondents in the sample before weighting, %	Number of respondents in the sample after the weighting, %	Statistics, %
TOTAL			100.0
<b>GENDER*</b>			
Male	47.4	49	49.5
Female	52.6	51	50.5
<b>AGE*</b>			
18 - 29	30.6	26.8	26.36
30 - 44	23.0	25.5	25.14
45 - 59	29.6	26.4	26.75
60+	16.9	21.3	21.75
<b>REGION*</b>			
North	18.6	19.5	19.71
Center	46.3	47.5	46.76
South	35.1	33	33.53
<b>SETTLEMENT*</b>			
Urban area	55.5	54.7	54.36
Rural area	44.5	45.3	45.64

Source: INSTAT



The China-CEE Institute Nonprofit Ltd. is a legal entity registered in Hungary in April in 2017, fund by the Institute of European Studies, Chinese Academy of Social Sciences. The China-CEE Institute is a Think Tank based in Budapest, promoting the better understanding between Central and Eastern European countries and China.

The China-CEE Institute produces weekly briefings, working papers, surveys, and organizes workshops, conferences, as well as publishes books and reports.



GKI Economic Research Co. is a private company, the market leader in the market of independent Hungarian economic analyses and forecasts, by far the most-cited Hungarian think tank.

The company has an extensive set of services on offer for its customers, which include: analysis and forecast

supporting economic policy; impact analysis on the economic policy of the EU and on draft proposals of EU legal rules;

industrial, sectoral and regional reports, analysis of competitors;

market research and financial and market analyses and forecasts for strategic decisions of financial institutions and companies.

The Report is based on an extensive survey with 1,8000 questionnaires in 18 Central and Eastern European countries, commissioned by

the China-CEE Institute in cooperation with the GKI Economic Research Co.